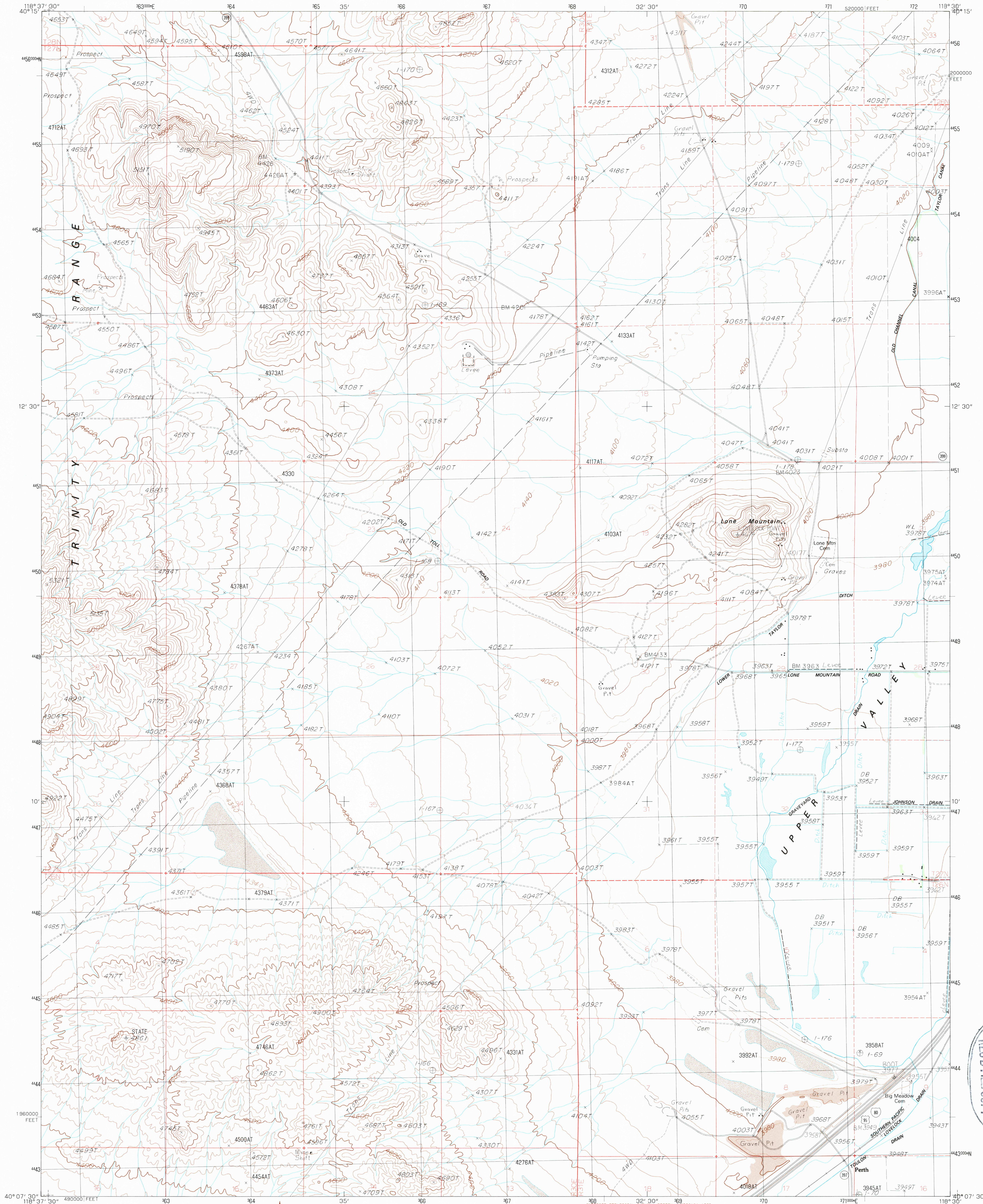


UNITED STATES
DEPARTMENT OF THE INTERIOR
GEOLOGICAL SURVEY

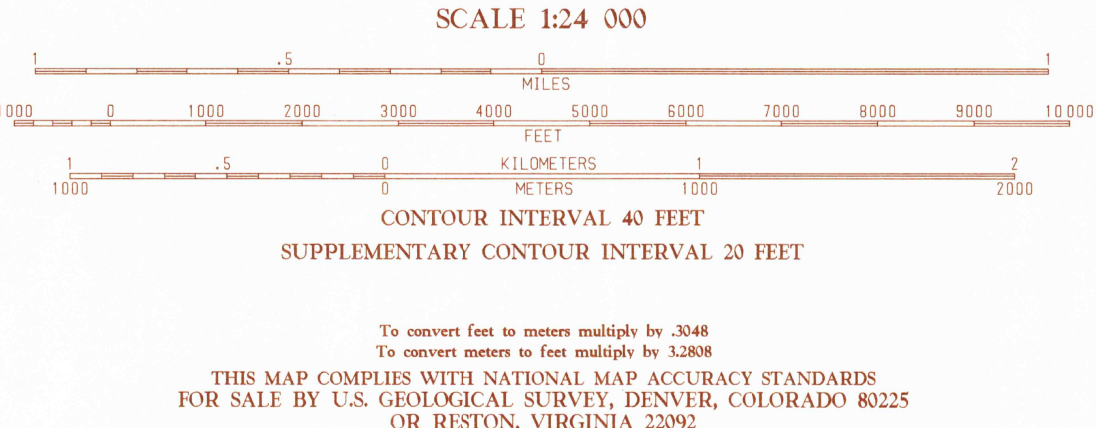
WEST OF LOVELOCK QUADRANGLE
NEVADA-PERSHING CO.
7.5 MINUTE SERIES (TOPOGRAPHIC)



U.S. GEOLOGICAL SURVEY
JUN 9 1988
RECD FILE COPY

PRODUCED BY THE UNITED STATES GEOLOGICAL SURVEY
CONTROL BY U.S.G.S. NOS/NOAA
COMPILED FROM AERIAL PHOTOGRAPHS TAKEN 1986
FIELD CHECKED 1983. MAP EDITED 1987
PROJECTION TRANSVERSE MERCATOR
GRID 100-METER UNIVERSAL TRANSVERSE MERCATOR ZONE 12
10,000-FOOT STATE GRID TICS NEVADA, WEST ZONE
UTM GRID DECLINATION 1°00' WEST
1987 MAGNETIC NORTH DECLINATION 16° EAST
VERTICAL DATUM NATIONAL GEODETIC VERTICAL DATUM OF 1929
HORIZONTAL DATUM 1927 NORTH AMERICAN DATUM
To place on the predicted North American Datum of 1983,
move the projection lines as shown by dashed corner ticks
(14 meters north and 84 meters east).
There may be private inholdings within the boundaries of any
Federal and State Reservations shown on this map.
No distinction made between houses, barns, and other buildings.

PROVISIONAL MAP
Produced from original
manuscript drawings. Infor-
mation shown as of date of
photography. 1



QUADRANGLE LOCATION

| | | | | |
|---|---|---|---|--------------------|
| 1 | 2 | 3 | 1 | Trinity Pass |
| | | | 2 | Poker Brown Spring |
| | | | 3 | Archie |
| 4 | | 5 | 4 | Trinity Peak |
| | | | 5 | Lovelock |
| | | | 6 | Toulon Peak |
| | | | 7 | Granite Point |
| 6 | 7 | 8 | 8 | Wildhorse Pass |

ADJOINING 7.5' QUADRANGLE NAMES

ROAD LEGEND
Improved Road
Unimproved Road
Trail
Interstate Route
U.S. Route
State Route
WEST OF LOVELOCK, NEVADA
PROVISIONAL EDITION 1987
40118-B5-TF-024