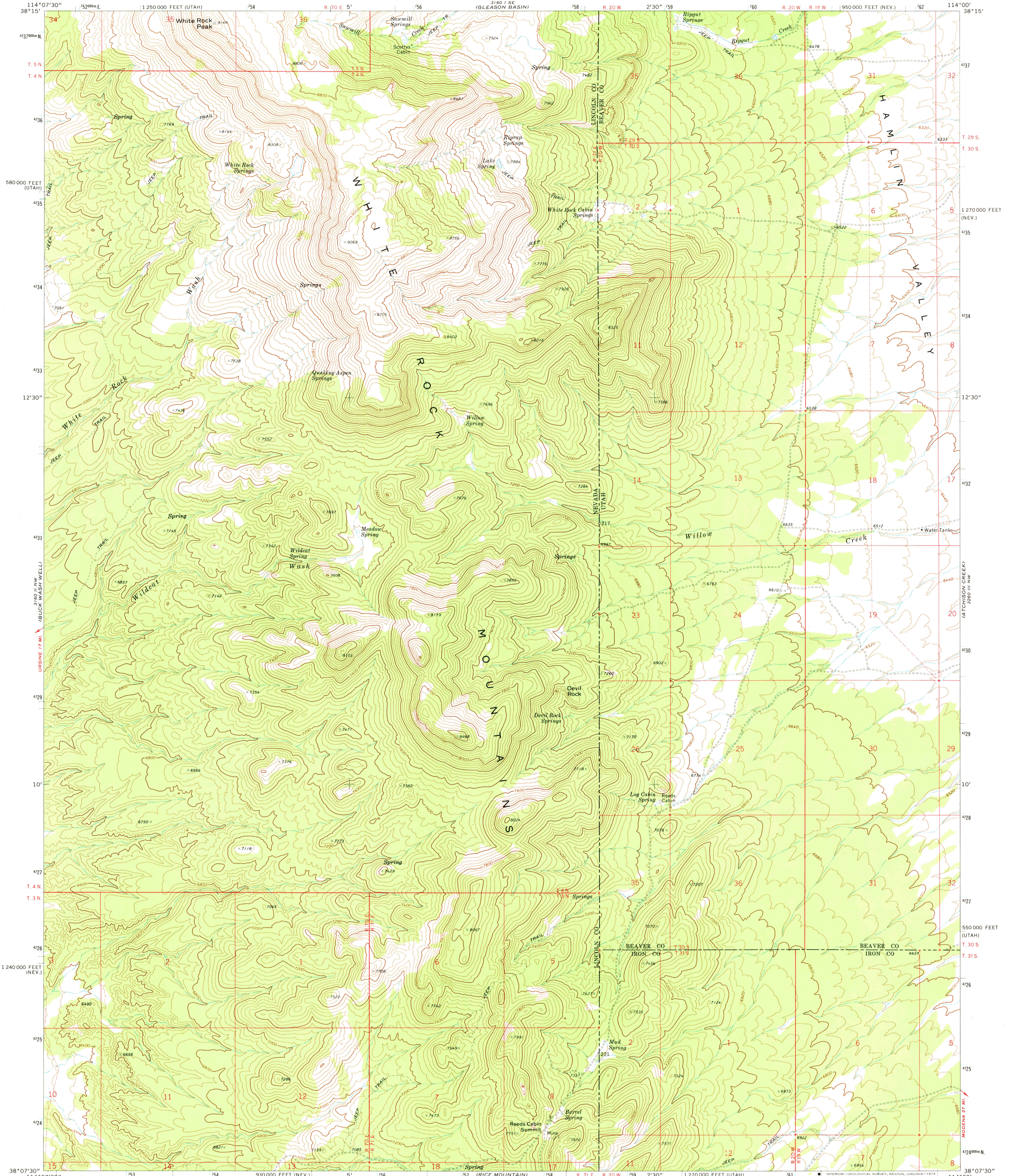
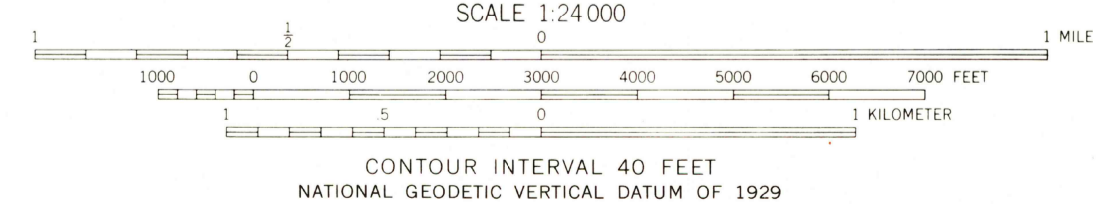
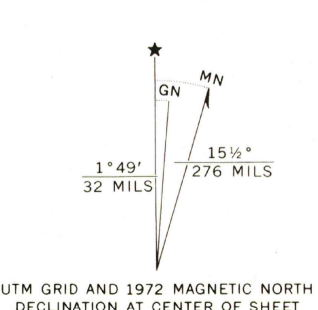


UNITED STATES
DEPARTMENT OF THE INTERIOR
GEOLOGICAL SURVEY

WHITE ROCK PEAK QUADRANGLE
NEVADA-UTAH
7.5 MINUTE SERIES (TOPOGRAPHIC)



Mapped, edited, and published by the Geological Survey
Control by USGS and USC&GS
Topography by photogrammetric methods from aerial photographs taken 1970. Field checked 1972
Projection: Nevada coordinate system, east zone (transverse Mercator)
10,000-foot grid ticks based on Nevada coordinate system, east zone, and Utah coordinate system, south zone
1000-meter Universal Transverse Mercator grid ticks, zone 11, shown in blue. 1927 North American datum
Fine red dashed lines indicate selected fence lines
Where omitted, land lines have not been established



ROAD CLASSIFICATION

| | |
|---------------------------------|---|
| Primary highway, hard surface | Light-duty road, hard or improved surface |
| Secondary highway, hard surface | Unimproved road |
| Interstate Route | U. S. Route |
| | State Route |

THIS MAP COMPLIES WITH NATIONAL MAP ACCURACY STANDARDS
FOR SALE BY U. S. GEOLOGICAL SURVEY, DENVER, COLORADO 80225, OR RESTON, VIRGINIA
A FOLDER DESCRIBING TOPOGRAPHIC MAPS AND SYMBOLS IS AVAILABLE ON REQUEST

USGS
Historical File
Topographic Division

WHITE ROCK PEAK, NEV.—UTAH
N3807.5—W11400.7.5
1972

AMS 3160 II NE—SERIES V896

JAN 6 1975

MILLE CANYON
3160 I SW
3160 I SW

MINERS CABIN WASH
3160 I SW
3160 I SW

EAGLE VALLEY RESERVOIR
3160 I SW
3160 I SW

SEAMOUNT Mtn SW
3160 I SW
3160 I SW