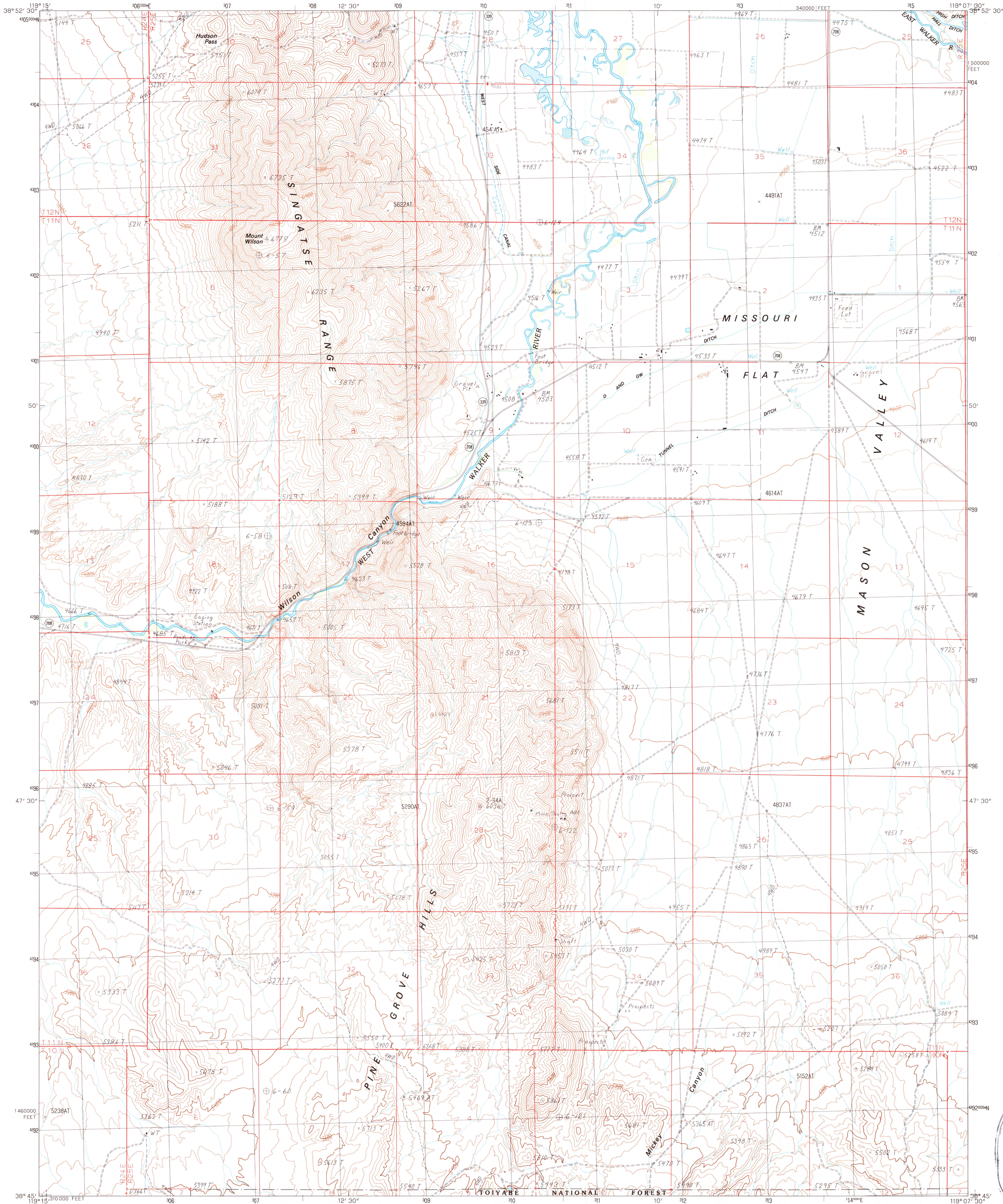


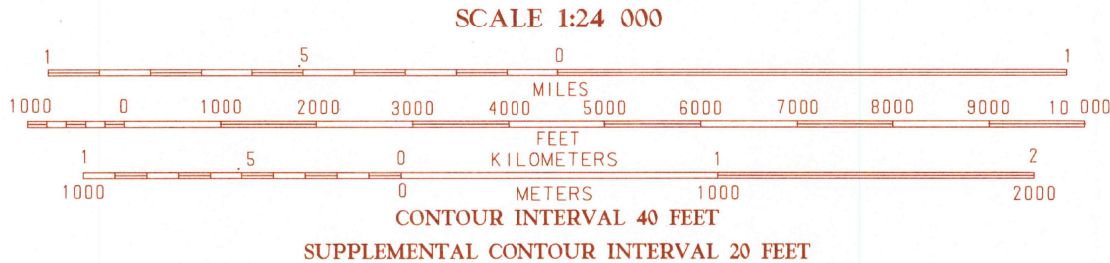
UNITED STATES
DEPARTMENT OF THE INTERIOR
GEOLOGICAL SURVEY

WILSON CANYON QUADRANGLE
NEVADA · LYON CO.
7.5 MINUTE SERIES (TOPOGRAPHIC)



PRODUCED BY THE UNITED STATES GEOLOGICAL SURVEY
CONTROL BY USGS, NOS/NOAA
COMPILED FROM AERIAL PHOTOGRAPHS TAKEN 1982
FIELD CHECKED 1984 MAP EDITED
PROJECTION TRANSVERSE MERCATOR
GRID NATIONAL TRANSVERSE MERCATOR ZONE 11
8000-FOOT STATE GRID TICKS NEVADA, WEST ZONE
UTM GRID DECLINATION 122° WEST
1986 MAGNETIC NORTH DECLINATION 15° 30' EAST
VERTICAL DATUM NATIONAL GEODETIC VERTICAL DATUM OF 1929
HORIZONTAL DATUM 1927 NORTH AMERICAN DATUM
To place on the predicted North American Datum of 1983,
move the projection lines as shown by dashed corner ticks
(12 meters north and 85 meters east)
There may be private inholdings within the boundaries of any
Federal and State Reservations shown on this map
All marginal data and lettering generated and positioned by
automated type placement procedures
Where omitted, land lines have not been established
No distinction made between houses, barns, and other buildings

PROVISIONAL MAP
Produced from original
manuscript drawings. Infor-
mation shown as of date of
photography.



THIS MAP COMPLIES WITH NATIONAL MAP ACCURACY STANDARDS
FOR SALE BY U.S. GEOLOGICAL SURVEY, DENVER, COLORADO 80225
OR RESTON, VIRGINIA 22092

1	2	3	Arctia Lake
4	5	Veridian	Veridian NE
6	7	8	Veridian SE
			Daniel Creek Ranch
			Mount Zion
			Pine Grove Spring

ADJOINING 7.5' QUADRANGLE NAMES

ROAD LEGEND
Improved Road
Unimproved Road
Trail
Interstate Route U.S. Route State Route

WILSON CANYON, NEVADA
PROVISIONAL EDITION 1986

38119-G2-TF-024

