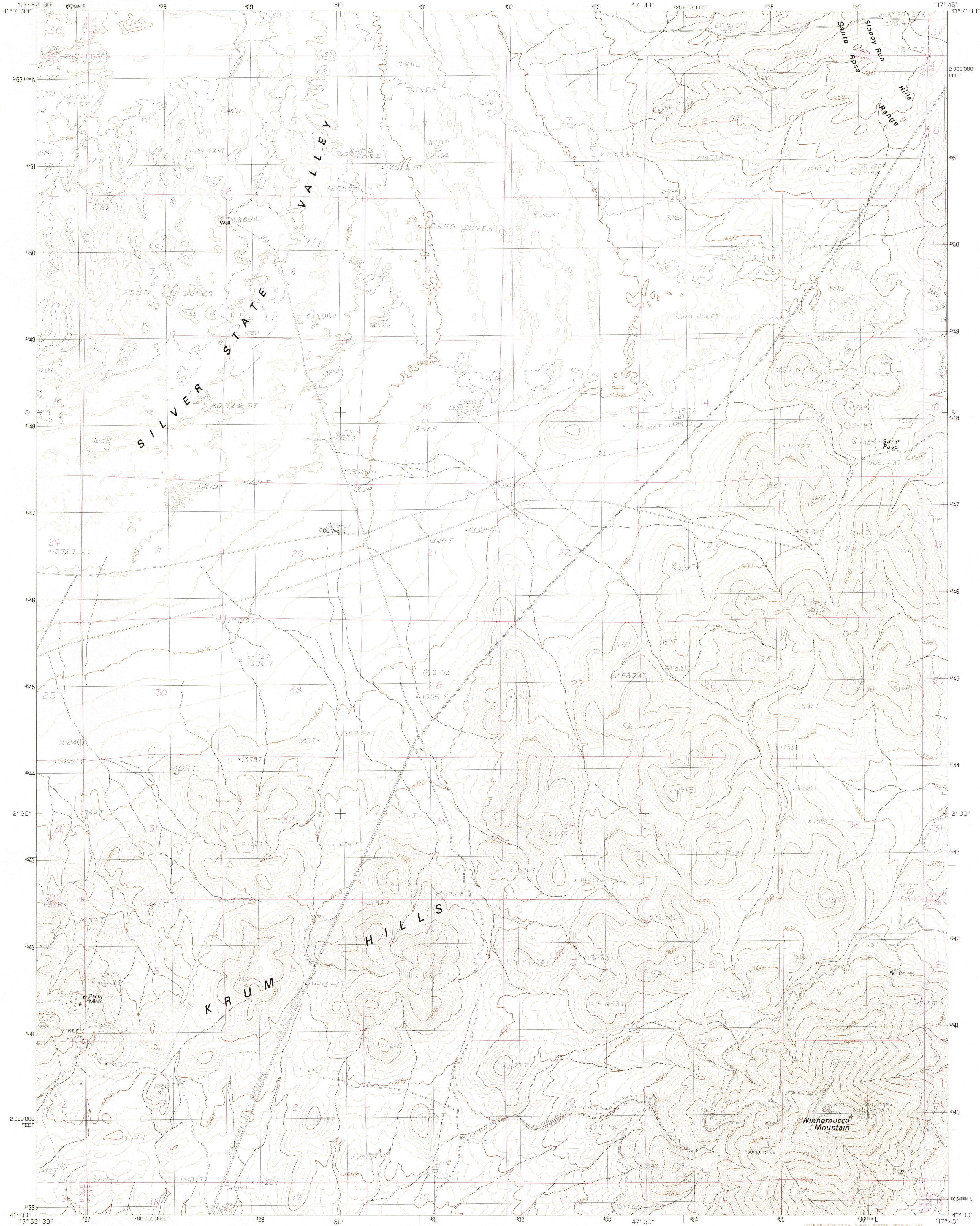


UNITED STATES
DEPARTMENT OF THE INTERIOR
GEOLOGICAL SURVEY

WINNEMUCCA MTN QUADRANGLE
NEVADA-HUMBOLDT CO.
7.5 MINUTE SERIES (TOPOGRAPHIC)



PRODUCED BY THE UNITED STATES GEOLOGICAL SURVEY
CONTROL BY USGS, NOS/NOAA
COMPILED FROM AERIAL PHOTOGRAPHS TAKEN 1976
FIELD CHECKED 1977. MAP EDITED 1982
PROJECTION UNIVERSAL TRANSVERSE MERCATOR
GRID: 1000-METER UNIVERSAL TRANSVERSE MERCATOR ZONE 11
10,000-FOOT STATE GRID TICS NEVADA, WEST ZONE
UTM GRID DECLINATION 032 WEST
1980 MAGNETIC NORTH DECLINATION 17 EAST
VERTICAL DATUM NATIONAL GEODETIC VERTICAL DATUM OF 1929
HORIZONTAL DATUM 1927 NORTH AMERICAN DATUM
To place on the predicted North American Datum of 1983,
move the projection lines as shown by dashed corner ticks
(14 meters north/81 meters east)
There may be private inholdings within the boundaries of any
Federal and State Reservations shown on this map
Certain land lines are omitted because of insufficient data

PROVISIONAL MAP
Produced from original
manuscript drawings. Infor-
mation shown as of date of
field check

SCALE 1:24 000
1 1000 0 1000 2000 3000 4000 5000 6000 7000 8000 9000 10000
KILOMETERS
METERS
MILES
FOOT
CONTOUR INTERVAL 10 METERS
SUPPLEMENTARY CONTOUR INTERVAL 5 METERS
CONTROL ELEVATIONS SHOWN TO THE NEAREST 0.1 METER
OTHER ELEVATIONS SHOWN TO THE NEAREST METER
To convert meters to feet multiply by 3.2808
To convert feet to meters multiply by 0.3048
THIS MAP COMPLIES WITH NATIONAL MAP ACCURACY STANDARDS
FOR SALE BY U.S. GEOLOGICAL SURVEY, DENVER, COLORADO 80225, OR RESTON, VIRGINIA 22092

1	2	3	1 Silver State Draw
4	5	2 Bloody Run Peak	
6	7	3 China Garden	
		4 Barrett Springs	
		5 Vase	
		6 Rose Creek	
		7 Winnemucca West	
		8 Winnemucca East	

ROAD LEGEND
Improved Road
Unimproved Road
Trail
Interstate Route U.S. Route State Route
WINNEMUCCA MTN., NEVADA
PROVISIONAL EDITION 1982
41117-A7-TM-024

DEC 03 1982
RETURN TO:
USGS M&T HISTORICAL MAP ARCHIVE

1980