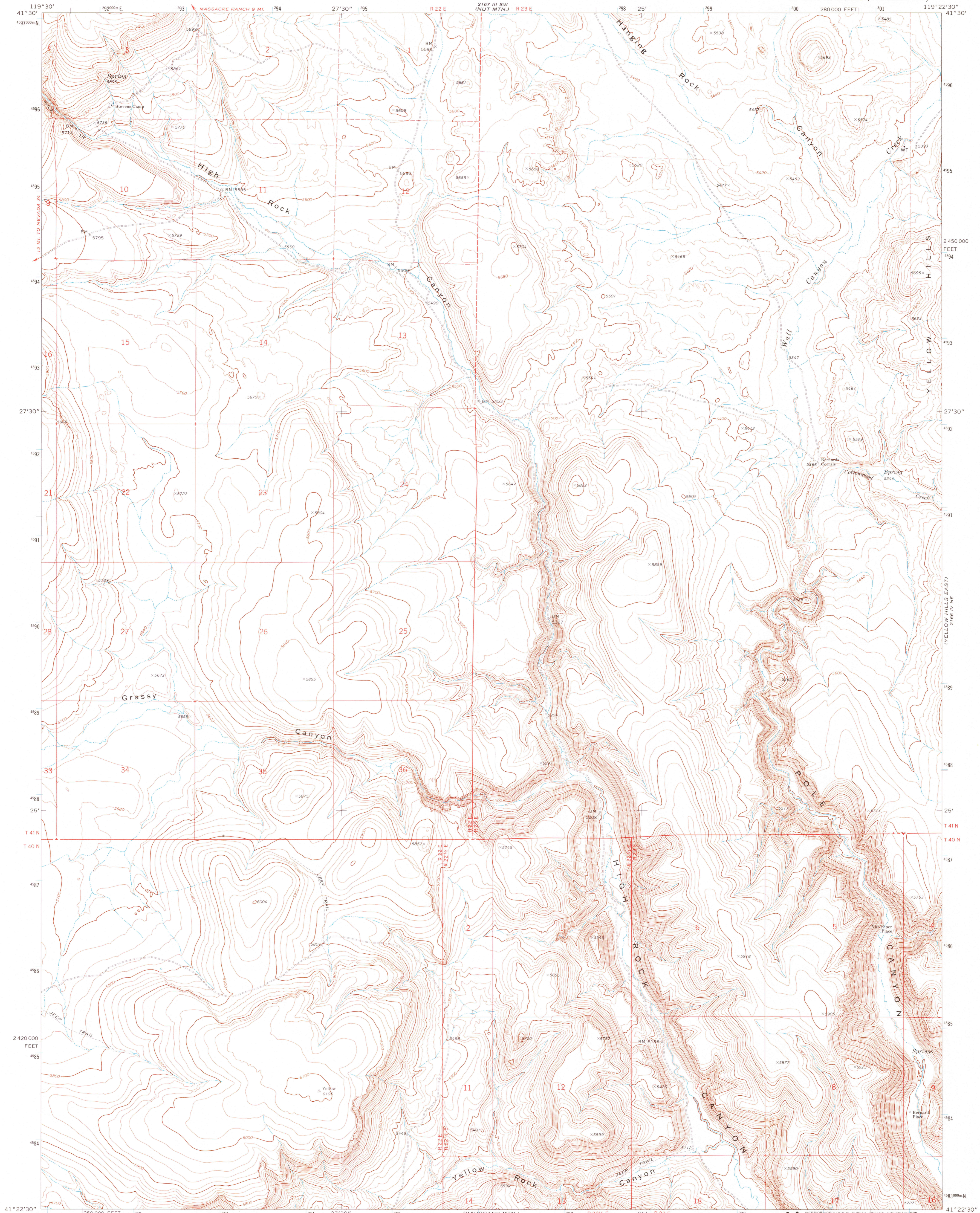
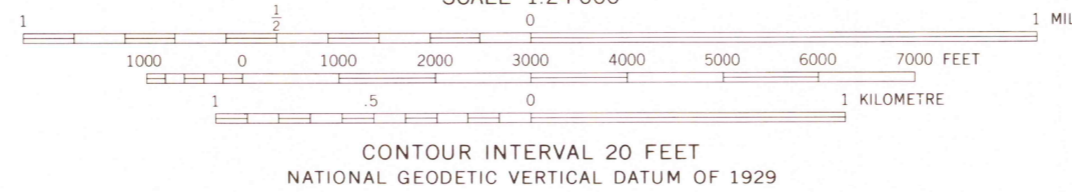
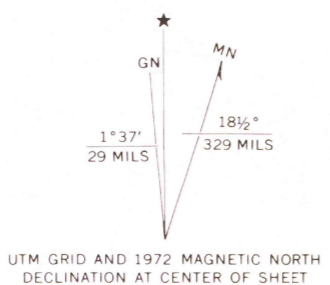


UNITED STATES  
DEPARTMENT OF THE INTERIOR  
GEOLOGICAL SURVEY

YELLOW HILLS WEST QUADRANGLE  
NEVADA—WASHOE CO.  
7.5 MINUTE SERIES (TOPOGRAPHIC)



Mapped, edited, and published by the Geological Survey  
Control by USGS and NOS/NOAA  
Topography by photogrammetric methods from aerial  
photographs taken 1971. Field checked 1972.  
Projection and 10,000-foot grid ticks: Nevada coordinate  
system, west zone (transverse Mercator)  
1000-metre Universal Transverse Mercator grid ticks,  
zone 11, shown in blue. 1927 North American datum  
Fine red dashed lines indicate selected fence lines  
Where omitted, land lines have not been established  
or are not shown because of insufficient data  
Map photoinspected 1980  
No major culture or drainage changes observed



ROAD CLASSIFICATION

Primary highway, hard surface	Light duty road, hard or improved surface
Secondary highway, hard surface	Unimproved road
Interstate Route	U. S. Route
	State Route

THIS MAP COMPLIES WITH NATIONAL MAP ACCURACY STANDARDS  
FOR SALE BY U. S. GEOLOGICAL SURVEY, DENVER, COLORADO 80225, OR RESTON, VIRGINIA 22092  
A FOLDER DESCRIBING TOPOGRAPHIC MAPS AND SYMBOLS IS AVAILABLE ON REQUEST

YELLOW HILLS WEST, NEV.  
N4122.5—W11922.5/7.5  
1972  
PHOTOINSPECTED 1980  
AMS 2166 IV NW—SERIES V896

AMERICAN HISTORICAL  
MAR 15 1991  
AMERICAN HISTORICAL