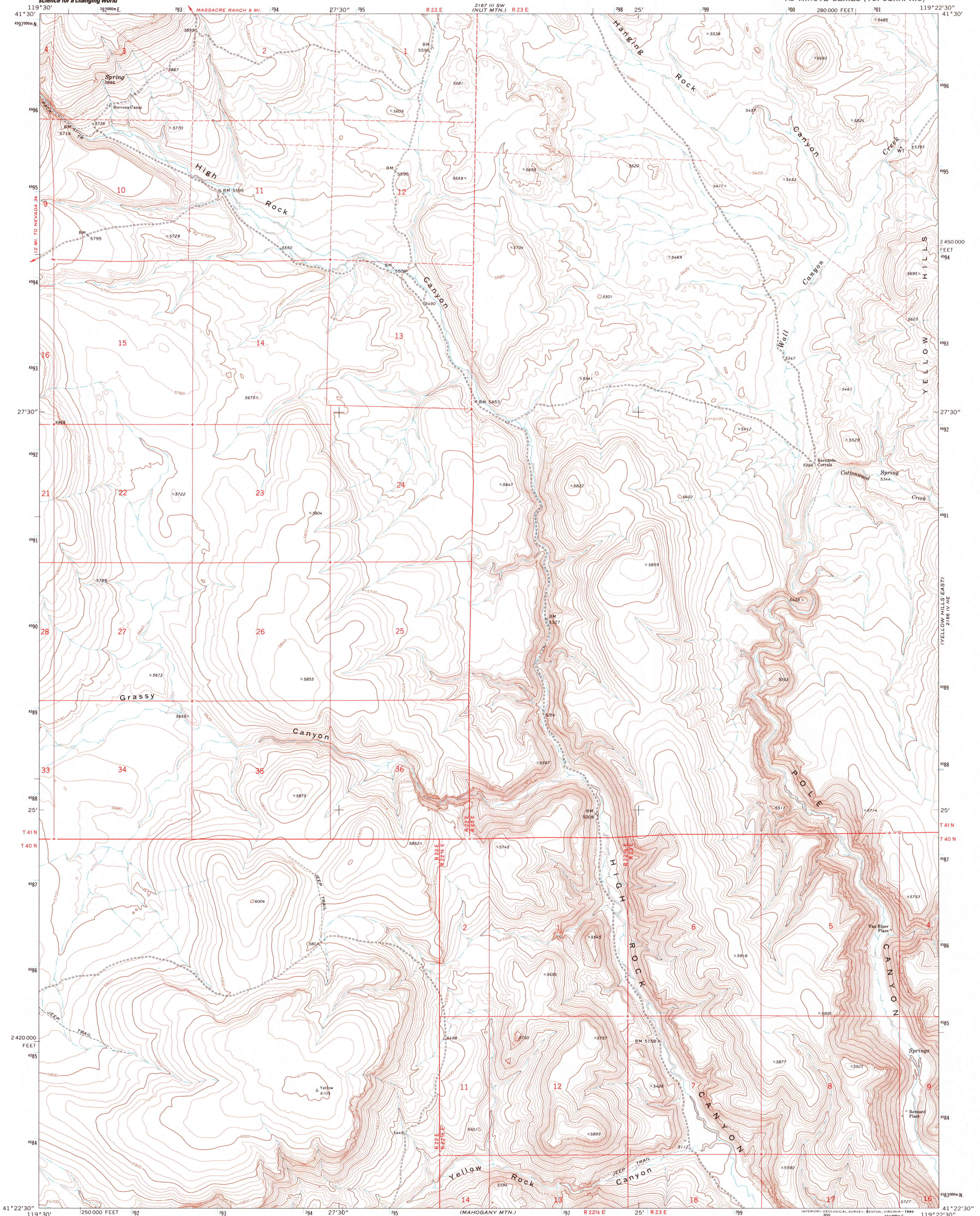


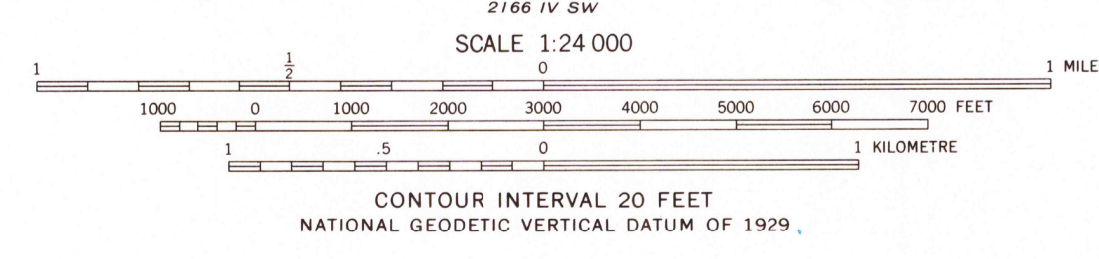
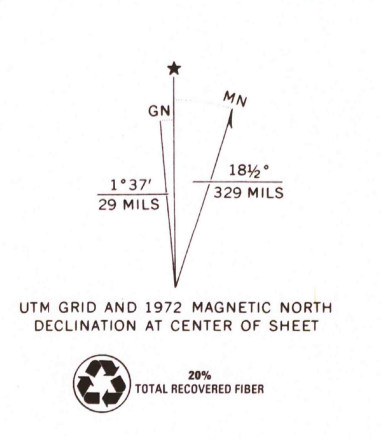


U.S. DEPARTMENT OF THE INTERIOR  
U.S. GEOLOGICAL SURVEY

YELLOW HILLS WEST QUADRANGLE  
NEVADA—WASHOE CO.  
7.5 MINUTE SERIES (TOPOGRAPHIC)



Mapped, edited, and published by the Geological Survey  
Control by USGS and NOS/NOAA  
Topography by photogrammetric methods from aerial photographs taken 1971. Field checked 1972  
Projection and 10,000-foot grid ticks: Nevada coordinate system, west zone (transverse Mercator)  
1000-metre Universal Transverse Mercator grid ticks, zone 11, shown in blue. 1927 North American datum  
Fine red dashed lines indicate selected fence lines  
Where omitted, land lines have not been established or are not shown because of insufficient data  
Map photoinspected 1980  
No major culture or drainage changes observed



ROAD CLASSIFICATION

- Primary highway, hard surface
- Secondary highway, hard surface
- Unimproved road
- Light-duty road, hard or improved surface
- U. S. Route
- State Route

RECEIVED  
YELLOW HILLS WEST, NEV.  
JUN 30 1999  
N4122.5-W11922.5/7.5

USGS NMD  
HISTORICAL MAP ARCHIVES

1972  
PHOTOINSPECTED 1980  
AMS 2166 IV NW—SERIES V896

THIS MAP COMPLIES WITH NATIONAL MAP ACCURACY STANDARDS  
FOR SALE BY U.S. GEOLOGICAL SURVEY, P.O. BOX 25286, DENVER, COLORADO 80225  
A FOLDER DESCRIBING TOPOGRAPHIC MAPS AND SYMBOLS IS AVAILABLE ON REQUEST

