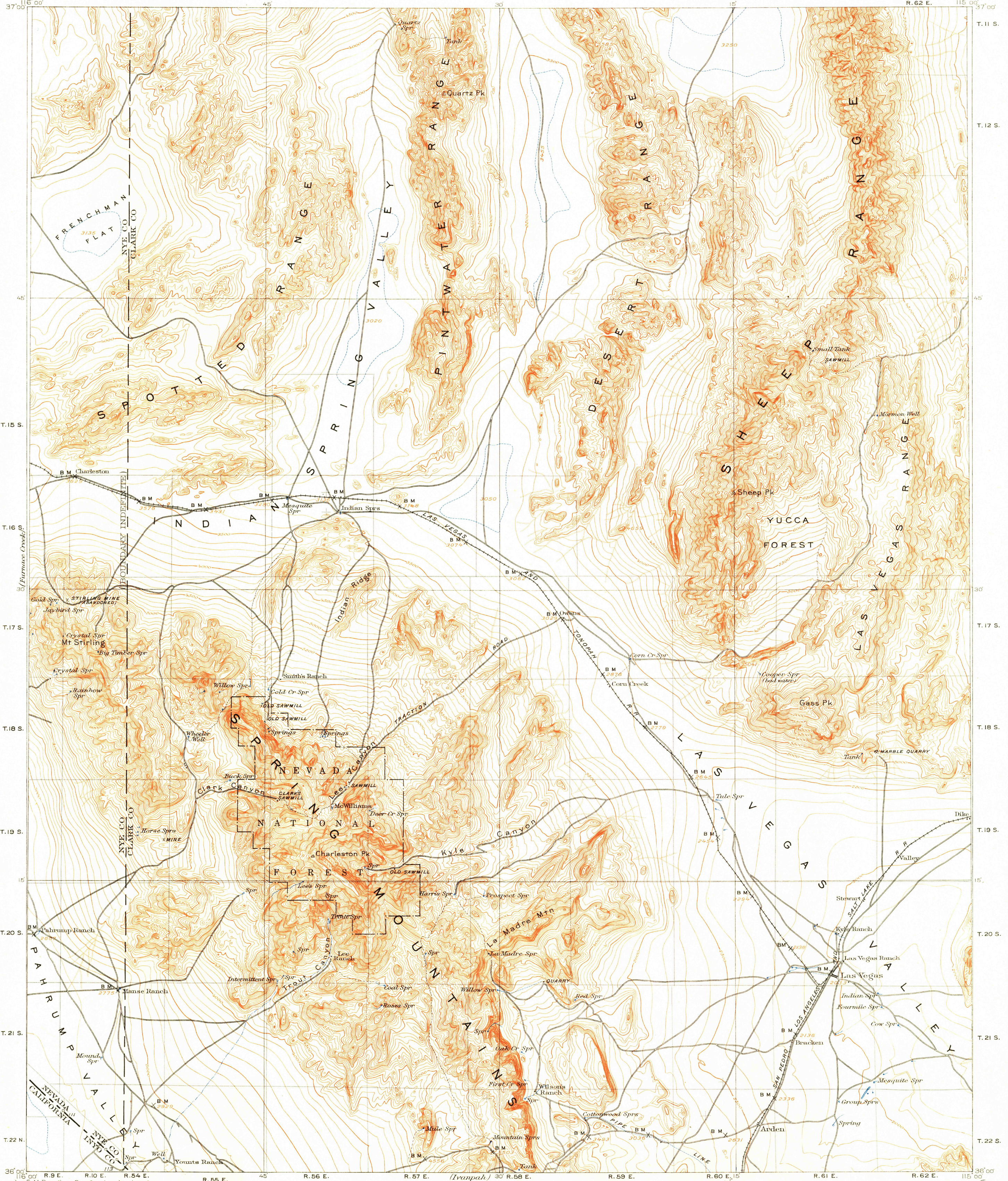
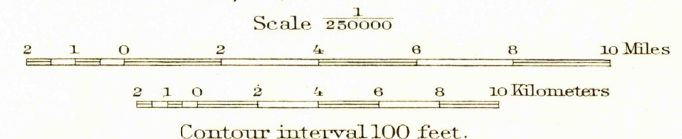
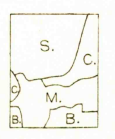


U.S.G.S.
FILE COPY
Inspection and Mapping



E.M. Douglas, Geographer in charge.
Topography and triangulation by R.H. Chapman,
B.D. Stewart, J.E. Blackburn, and D.F.C. Moor.
Surveyed in 1908-1907.



APPROXIMATE MEAN
DECLINATION 1907

Edition of Mar. 1908, reprinted 1951
Polyconic projection

USGS Library
Reston, VA.
Topo Archive

FOR SALE BY U.S. GEOLOGICAL SURVEY, FEDERAL CENTER, DENVER, COLORADO OR WASHINGTON 25, D.C.
A FOLDER DESCRIBING TOPOGRAPHIC MAPS AND SYMBOLS IS AVAILABLE ON REQUEST

U.S.G.S.
FILE COPY
Inspection and Mapping

NEV.-CALIF.
LAS VEGAS
NS500-W1500/60
USGS
Historical File
Topographic Division

MAR 27 1951 3215