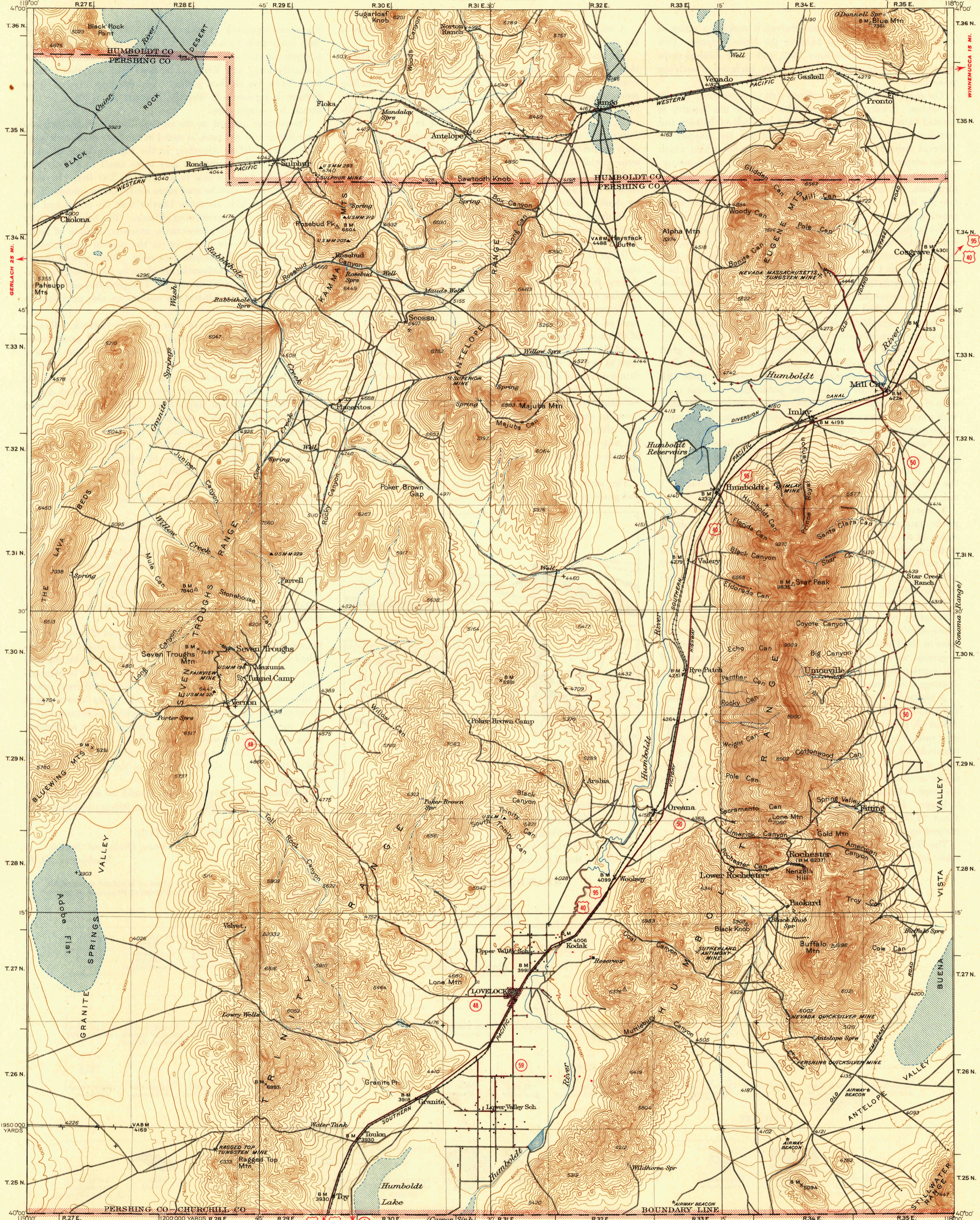


U. S. G. S.  
FILE COPY  
Illustration and Printing



Topography by W.G. Carson, R.R. Monbeck, and R.C. Seitz  
Surveyed in 1929-1931

**ROAD CLASSIFICATION 1946**

- Dependable hard-surface
- Secondary hard-surface
- Loose-surface graded
- Unsurfaced, graded
- Dirt road
- State Route (marked with a circled number)
- U.S. Route (marked with a circled number)

More than two lanes indicated along road with tick at point of change. **2 LANE, 4 LANE**

APPROXIMATE MEAN  
MAGNETIC DECLINATION 1931

Scale 1:50,000  
0 1 2 3 4 5 6 7 8 9 10 Miles  
0 1 2 3 4 5 6 7 8 9 10 Kilometers

Contour interval 100 feet.  
Datum is mean sea level.

Maps of the Eugene Mountains Area and Rochester Mining District from later and more detailed surveys covering parts of this area, are available

Polyconic projection. North American datum  
10000 yard grid based upon U.S. zone system, G

USGS  
Historical File  
Topographic Division

LOVELOCK, NEV.  
Edition of 1935  
reprinted 1947  
N4000-W11800/60

U. S. G. S.  
FILE COPY  
Illustration and Printing