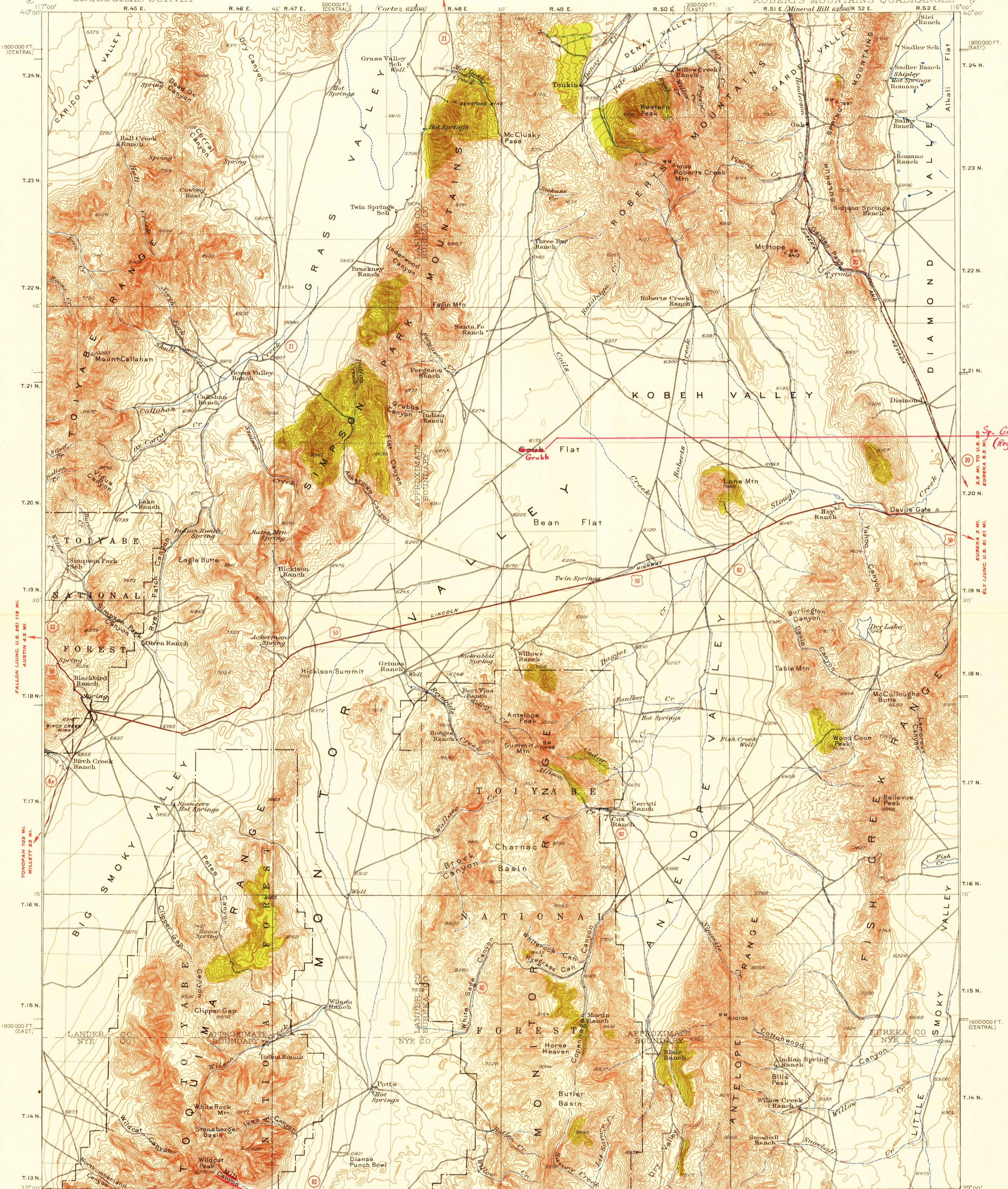


UNITED STATES
DEPARTMENT OF THE INTERIOR
GEOLOGICAL SURVEY

NEVADA
ROBERTS MOUNTAINS QUADRANGLE

81 MI. TO U.S. 40
CORTEX 10 MI.

84 MI. TO U.S. 40
MINERAL 13 MI.



Sp. Grubb Flat
(Region memo 8-30-57)
P.D. Dugan

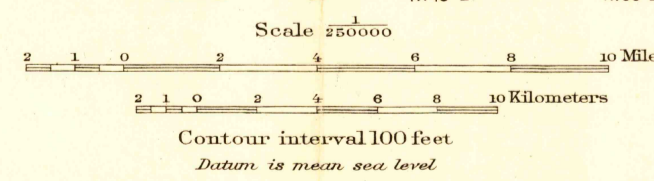
2.5 MI. TO U.S. 40
EUREKA 5.5 MI.
ELY (UNCL. U.S. 61 MI.)

FALLOON (UNCL. U.S. 83) 118 MI.
AUSTIN 4.5 MI.

TONOPAH 103 MI.
MILLETT 23 MI.

ROAD CLASSIFICATION
 Heavy-duty ——— 4 LANE 6 LANE Light-duty ———
 Medium-duty ——— 4 LANE 6 LANE Unimproved dirt ———
 U. S. Route State Route

BELMONT 35 MI.
76 MI. TO U.S. 8



INTERIOR-GEOLOGICAL SURVEY, WASHINGTON, D.C. 20515
 Polyconic projection. To place on 1927 North American datum
 move projection lines 95 feet north and 70 feet west
 100000-foot grids based on Nevada (East) and Nevada (Central)
 rectangular coordinate system

ROBERTS MOUNTAINS, NEV.
N3900-W11600/60

FOR SALE BY U.S. GEOLOGICAL SURVEY, FEDERAL CENTER, DENVER, COLORADO OR WASHINGTON 25, D.C.
 A FOLDER DESCRIBING TOPOGRAPHIC MAPS AND SYMBOLS IS AVAILABLE ON REQUEST

This area is also partially covered by 1:62 500
 scale maps of the Garden Valley and Roberts Creek Mtn
 1949 15-minute quadrangles