

U.S.G.S. FILE COPY

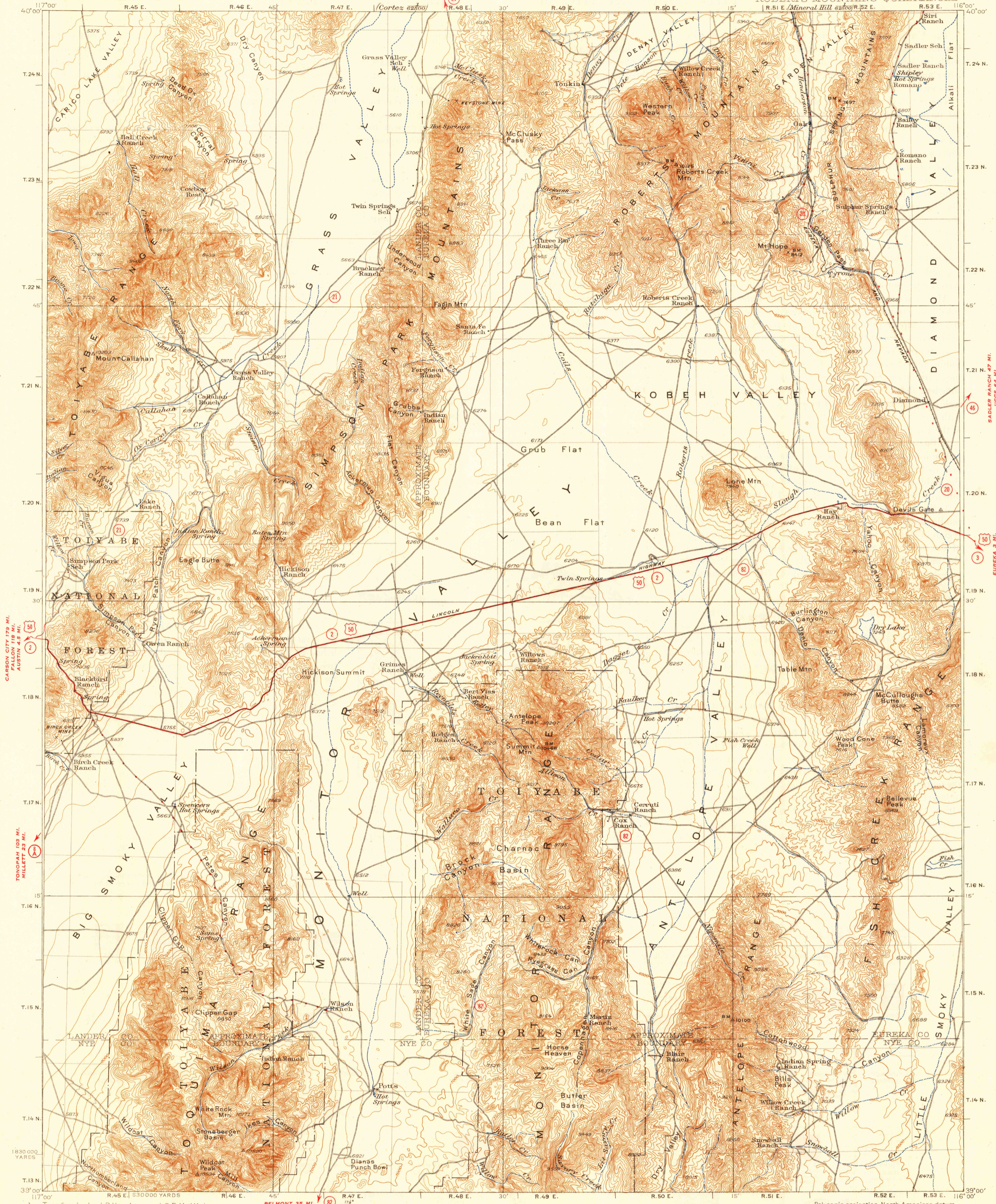
UNITED STATES DEPARTMENT OF THE INTERIOR GEOLOGICAL SURVEY

JUN. U.S. NO. 40 51 MI. CORTIZ 10.4 MI.

JUN. U.S. NO. 40 54 MI. MINERAL 13.4 MI.

NEVADA ROBERT'S MOUNTAINS QUADRANGLE

UNION 13 MI.



CARSON CITY 179 MI. FALLON 118 MI. AUSTIN 45 MI. TONOPAH 105 MI. MILLETT 23 MI.

SADLER RANCH 47 MI. JIGGS 62 MI. ELCO 87 MI. EUREKA 71 MI. JULY 81 MI.

Topography by J.P. Harrison and C.P. McKinley Surveyed in 1925-1926

Scale 250000 10 Miles 10 Kilometers

Polyconic projection, North American datum 10000 yard grid based upon U.S. zone system, F

ROAD CLASSIFICATION 1946: Dependable hard surface, Heavy-duty road, Loose surface graded, Unsurfaced, graded, Dirt road, More than two lanes indicated along road with tick at point of change.

ROBERT'S MOUNTAINS, NEV. Edition of 1929 reprinted 1946 N3900-W11600/60

U.S.G.S. FILE COPY

USCS Historical File Topographic Division