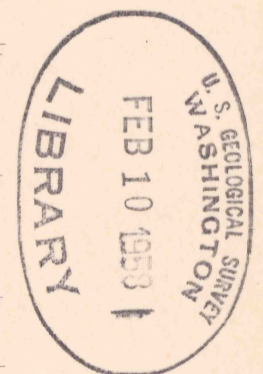
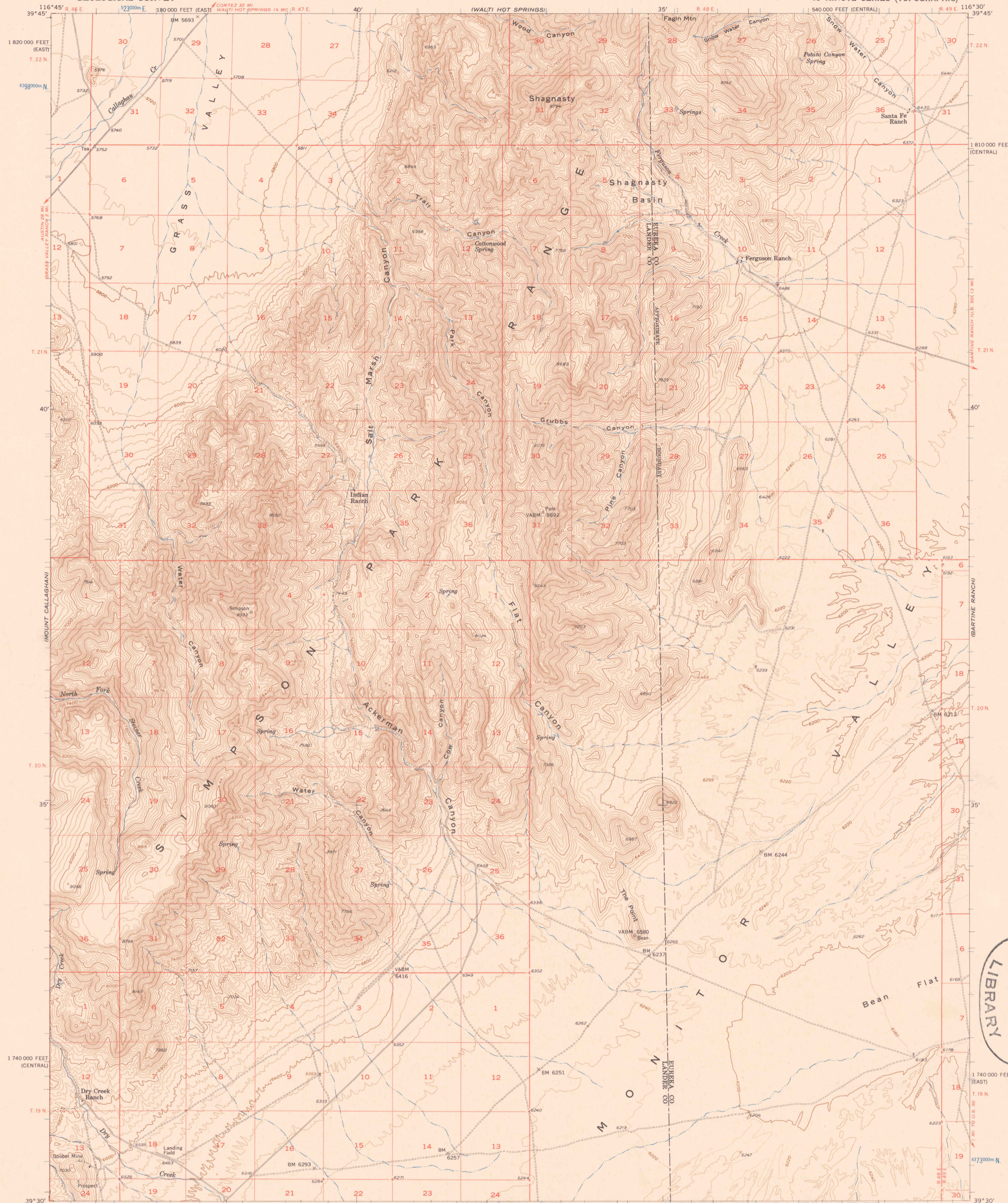
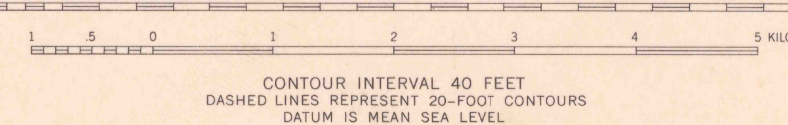
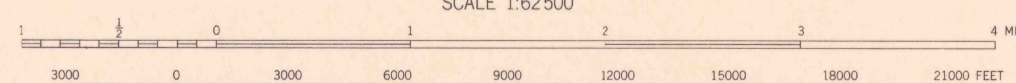
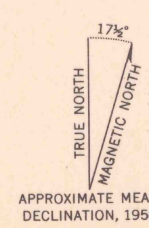


UNITED STATES  
DEPARTMENT OF THE INTERIOR  
GEOLOGICAL SURVEY

ACKERMAN CANYON QUADRANGLE  
NEVADA  
15 MINUTE SERIES (TOPOGRAPHIC)



Maped, edited, and published by the Geological Survey  
Control by USGS and USC&GS  
Topography from aerial photographs by ER-55 plotter  
Aerial photographs taken 1954. Field check 1956  
Polyconic projection. 1927 North American datum  
10,000-foot grids based on Nevada coordinate system,  
central zone and east zone  
1000-meter Universal Transverse Mercator grid ticks,  
zone 11, shown in blue  
Dashed land lines indicate approximate locations  
Unchecked elevations are shown in brown



CONTOUR INTERVAL 40 FEET  
DASHED LINES REPRESENT 20-FOOT CONTOURS  
DATUM IS MEAN SEA LEVEL

ROAD CLASSIFICATION  
Light-duty ——— Unimproved dirt - - - - -



ACKERMAN CANYON, NEV.  
N3930-W11630/15

THIS MAP COMPLIES WITH NATIONAL MAP ACCURACY STANDARDS  
FOR SALE BY U. S. GEOLOGICAL SURVEY, DENVER 2, COLORADO OR WASHINGTON 25, D. C.  
A FOLDER DESCRIBING TOPOGRAPHIC MAPS AND SYMBOLS IS AVAILABLE ON REQUEST

1956