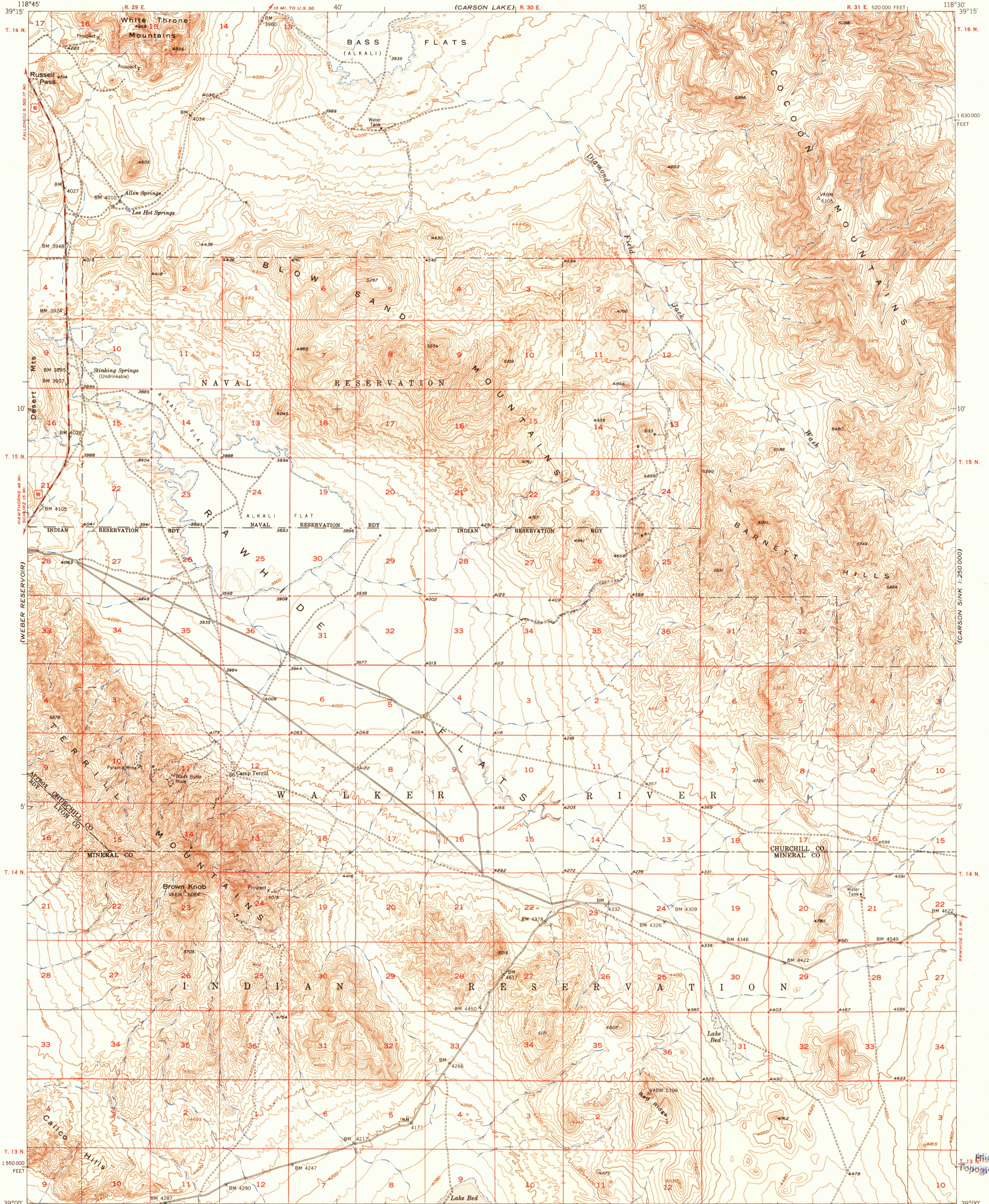


UNITED STATES
DEPARTMENT OF THE INTERIOR
GEOLOGICAL SURVEY

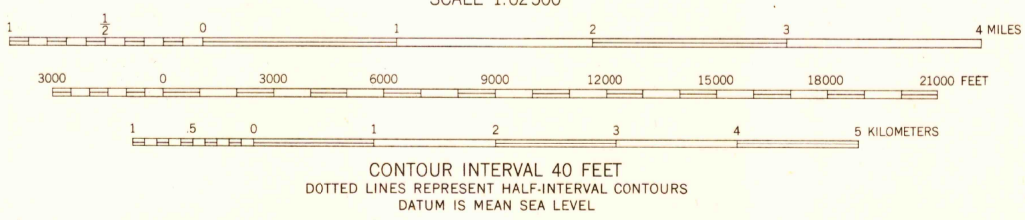
ALLEN SPRINGS QUADRANGLE
NEVADA
15 MINUTE SERIES (TOPOGRAPHIC)

(FALLOON)

(CARSON SINK)
1:250,000

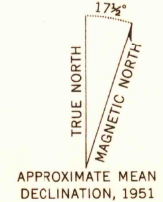


Mapped, edited, and published by the Geological Survey
Control by USGS and USC&GS
Topography from aerial photographs by multiplex methods
and by plane-table surveys 1951. Aerial photographs taken 1948
Polyconic projection. 1927 North American datum
10,000-foot grid based on Nevada coordinate system, west zone
Dashed land lines indicate approximate locations
Unchecked elevations are shown in brown



(HAWTHORNE)
1:250,000

USGS
Historical File
Topographic Division
(HAWTHORNE)
1:250,000



THIS MAP COMPLIES WITH NATIONAL MAP ACCURACY STANDARDS
FOR SALE BY U. S. GEOLOGICAL SURVEY, FEDERAL CENTER, DENVER, COLORADO OR WASHINGTON 25, D. C.
A FOLDER DESCRIBING TOPOGRAPHIC MAPS AND SYMBOLS IS AVAILABLE ON REQUEST



ALLEN SPRINGS, NEV.
N3900-W11830/15

1951
APR 1 1953 2680