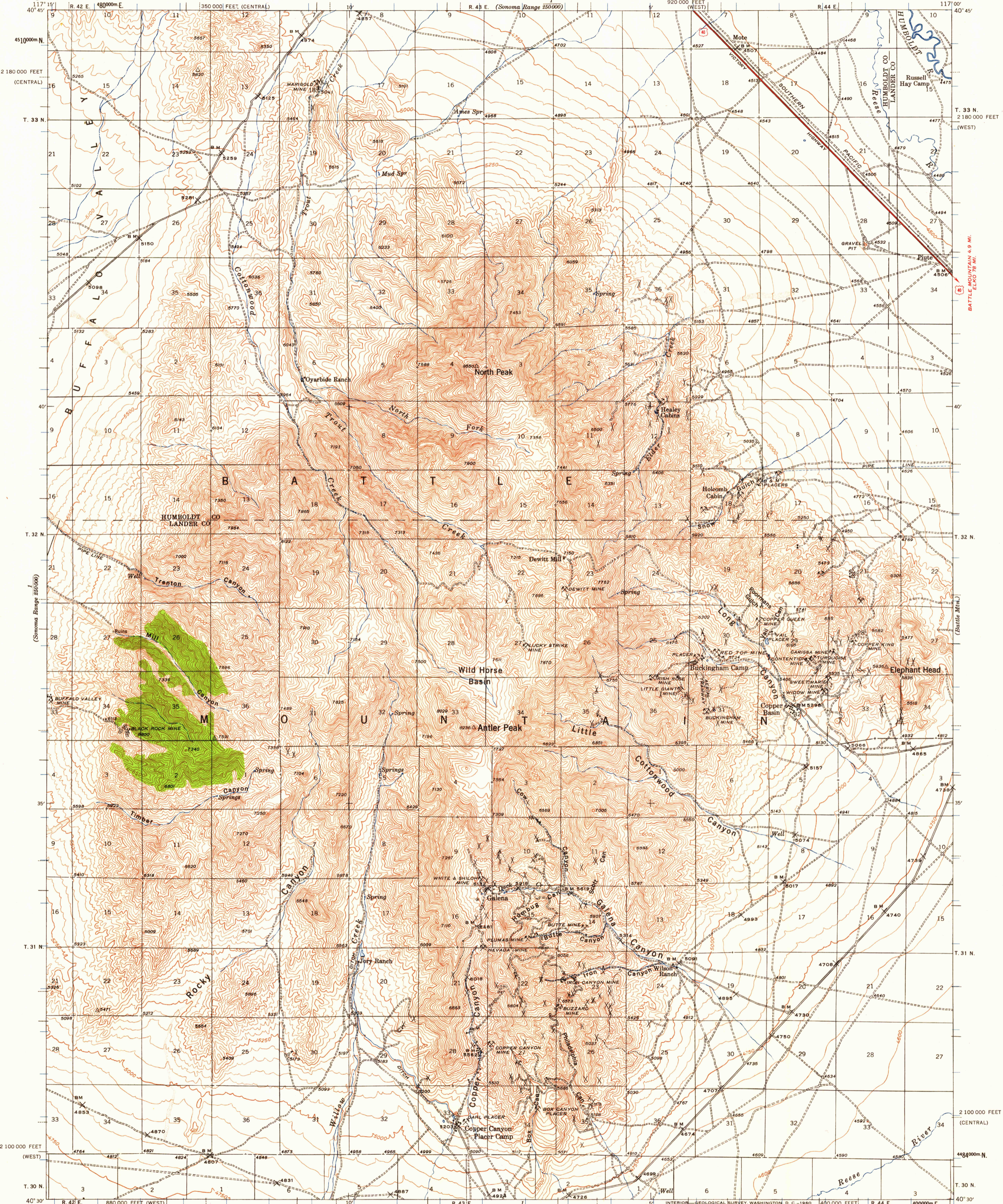


UNITED STATES
DEPARTMENT OF THE INTERIOR
GEOLOGICAL SURVEY

NEVADA
ANTLER PEAK QUADRANGLE
15-MINUTE SERIES



Topography by R. W. Burchard and A. Fankhauser
Surveyed in 1940

ROAD CLASSIFICATION
Heavy-duty ——— Light-duty ———
Unimproved dirt - - - - -
U.S. Route

TRUE NORTH
MAGNETIC NORTH
APPROXIMATE MEAN
DECLINATION, 1940

SCALE 1:62,500
CONTOUR INTERVAL 50 FEET
DATUM IS MEAN SEA LEVEL

Polyconic projection. 1927 North American datum
10,000-foot grids based on Nevada (West) and
Nevada (Central) rectangular coordinate systems
1000-meter Universal Transverse Mercator grid ticks,
zone 11, shown in blue

FOR SALE BY U. S. GEOLOGICAL SURVEY, DENVER 25, COLORADO OR WASHINGTON 25, D. C.
A FOLDER DESCRIBING TOPOGRAPHIC MAPS AND SYMBOLS IS AVAILABLE ON REQUEST

U.S.G.S.
FILE COPY
TOPOGRAPHIC DIVISION

ANTLER PEAK, NEV.
N 4030-W 11700/15

1940

U.S.G.S.
Historical File
Topographic Division

FEB 11 1950

1010