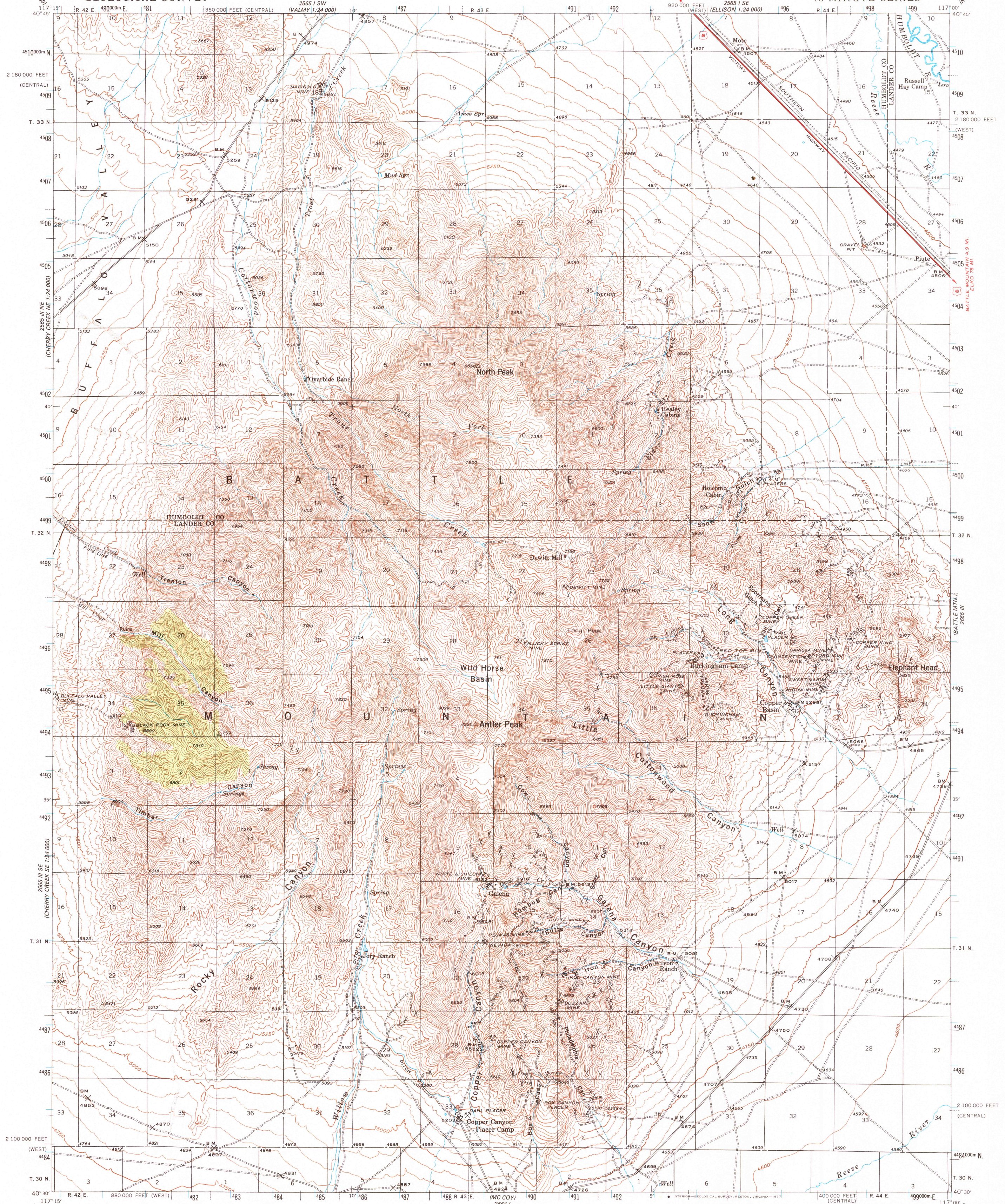


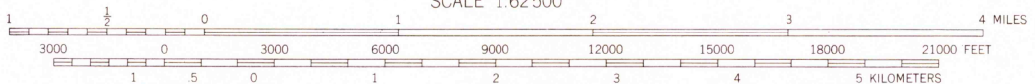
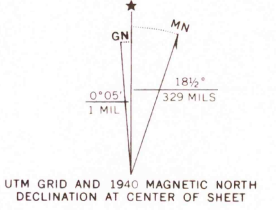
UNITED STATES  
DEPARTMENT OF THE INTERIOR  
GEOLOGICAL SURVEY

NEVADA  
ANTLER PEAK QUADRANGLE  
15-MINUTE SERIES



Topography by R. W. Burchard and A. Fankhauser  
Surveyed in 1940

**ROAD CLASSIFICATION**  
Heavy-duty ——— Light-duty ———  
Unimproved dirt - - - - -  
U.S. Route □



CONTOUR INTERVAL 50 FEET  
NATIONAL GEODETIC VERTICAL DATUM OF 1929



Polyconic projection. 1927 North American datum  
10,000-foot grids based on Nevada (West) and  
Nevada (Central) rectangular coordinate systems  
1000-meter Universal Transverse Mercator grid ticks,  
zone 11, shown in blue

ANTLER PEAK, NEV.  
N 4030—W 11700/15

1940  
AMS 2565 II—SERIES V796

FOR SALE BY U. S. GEOLOGICAL SURVEY, DENVER, COLORADO 80225, OR RESTON, VIRGINIA 22092  
A FOLDER DESCRIBING TOPOGRAPHIC MAPS AND SYMBOLS IS AVAILABLE ON REQUEST