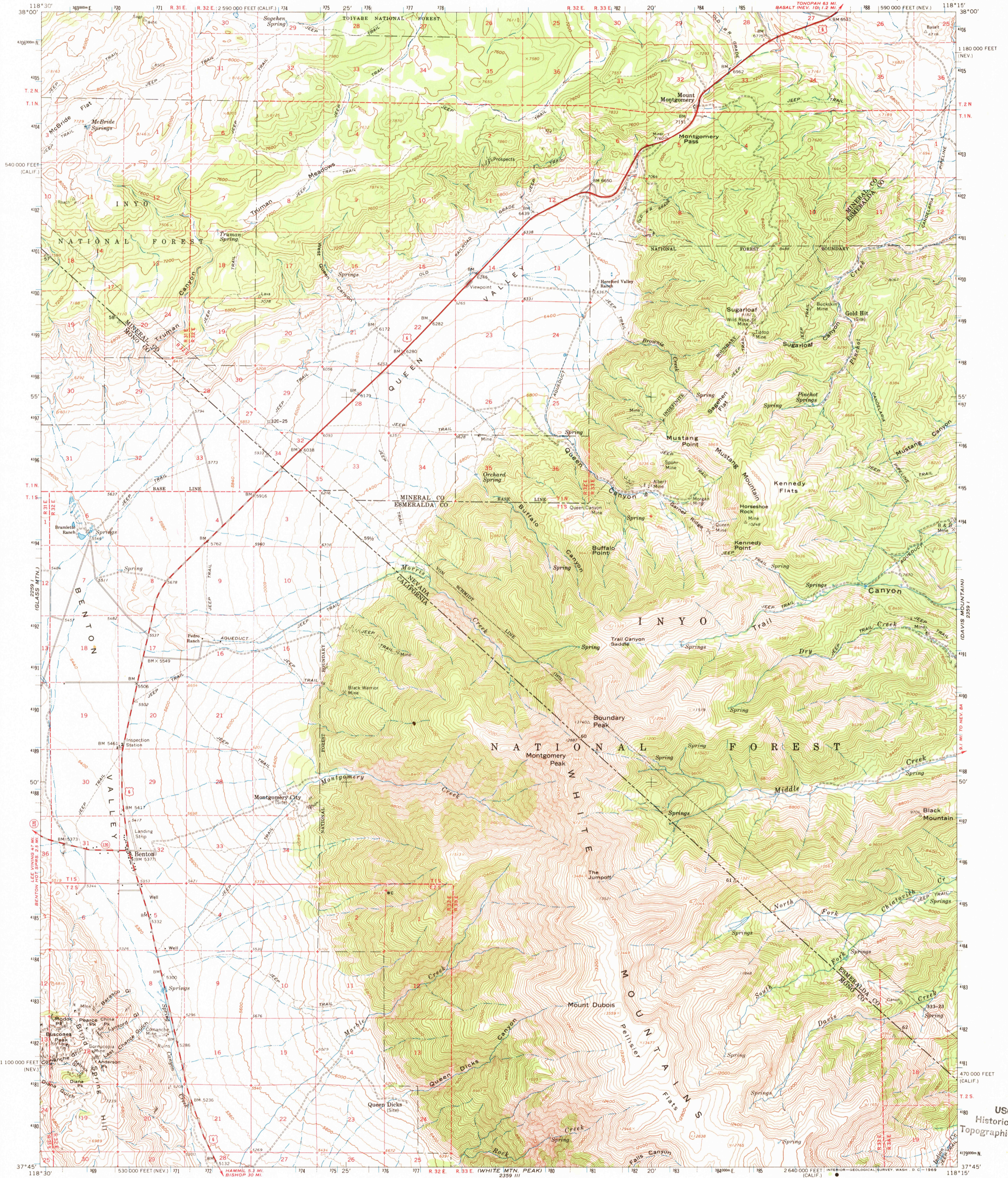


UNITED STATES
DEPARTMENT OF THE INTERIOR
GEOLOGICAL SURVEY

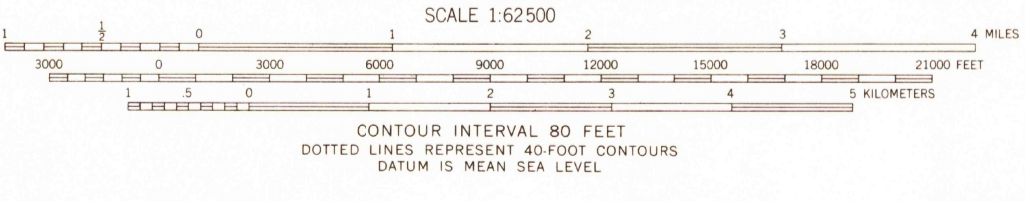
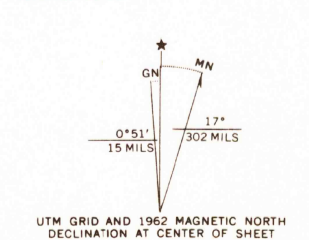
BENTON QUADRANGLE
NEVADA-CALIFORNIA
15 MINUTE SERIES (TOPOGRAPHIC)



HUNTOON VALLEY
2800 V. VALLEY
CASA DIABLO MTR. 2259 II

118° 15' 118° 00' 118° 15'
38° 00' 37° 45'

Mapped, edited, and published by the Geological Survey in cooperation with California Dept. of Water Resources Control by USGS, USC&GS, and USCE
Topography by photogrammetric methods from aerial photographs taken 1954. Field checked 1962
Polyconic projection. 1927 North American datum 10,000-foot grids based on Nevada coordinate system, west zone, and California coordinate system, zone 3
1000-meter Universal Transverse Mercator grid ticks, zone 11, shown in blue
Where omitted, land lines have not been established or are not shown because of insufficient data



USGS
Historical File
Topographic Division

ROAD CLASSIFICATION
Heavy-duty ——— Light-duty ———
Medium-duty ——— Unimproved dirt - - - - -
U.S. Route ○ State Route ○

U.S.G.S.
FILE COPY
TOPOGRAPHIC DIVISION

BENTON, NEV.-CALIF
N3745-W11815/15
1962
AMS 2359 IV-SERIES V796

8695
MAY 1 1969

THIS MAP COMPLIES WITH NATIONAL MAP ACCURACY STANDARDS
FOR SALE BY U. S. GEOLOGICAL SURVEY, DENVER, COLORADO 80225 OR WASHINGTON, D. C. 20242
A FOLDER DESCRIBING TOPOGRAPHIC MAPS AND SYMBOLS IS AVAILABLE ON REQUEST