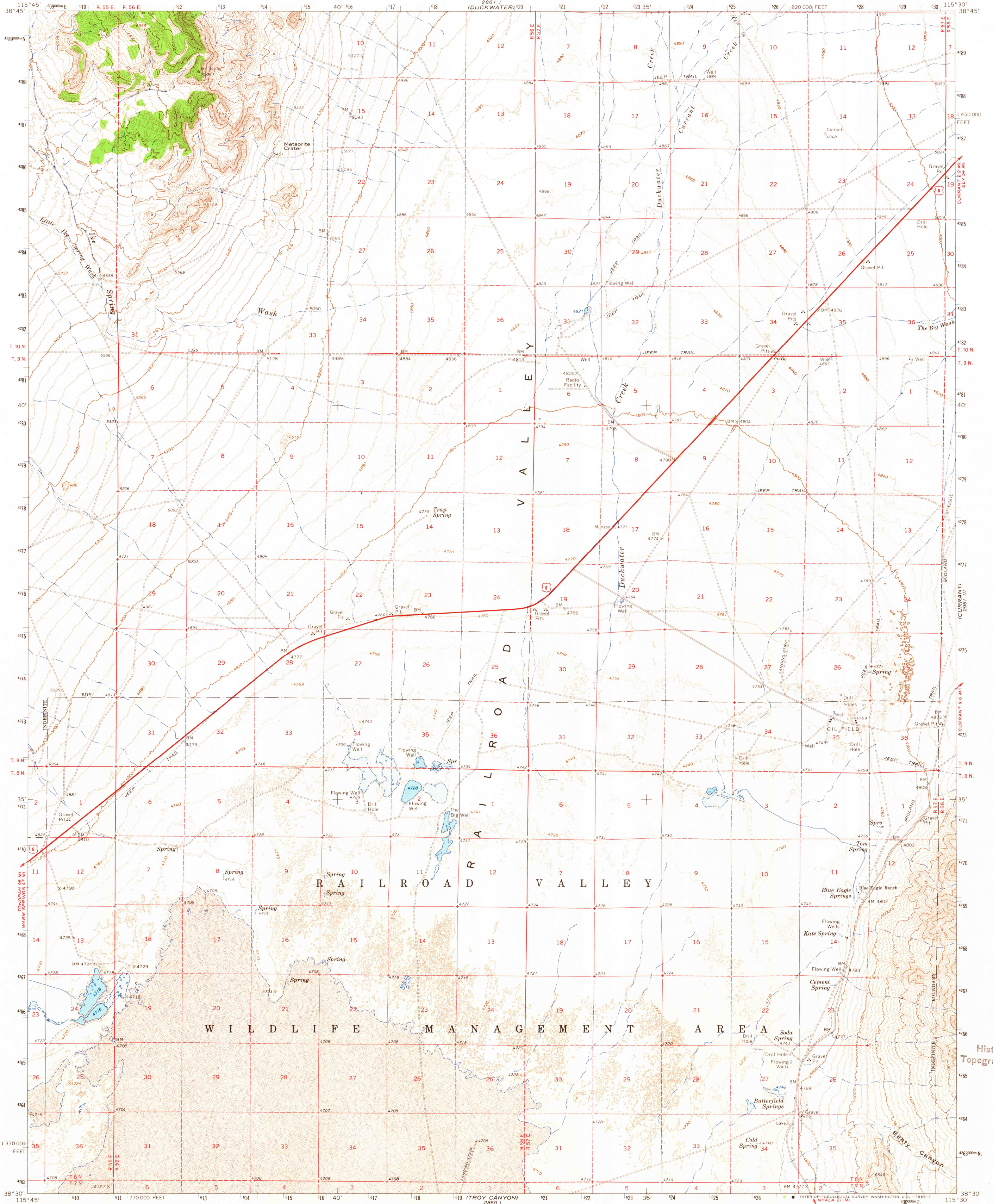


2961 IV  
(CURRENT MTN.)



Mapped, edited, and published by the Geological Survey

Control by USGS and USC&GS

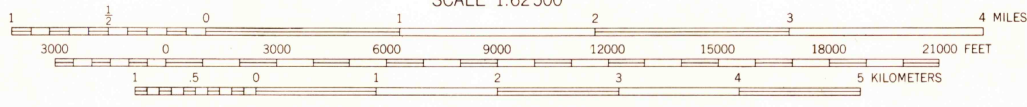
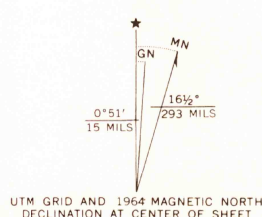
Topography by photogrammetric methods from aerial photographs taken 1958 and 1962 and planetable surveys 1964

Polyconic projection. 1927 North American datum

10,000-foot grid based on Nevada coordinate system, central zone

1000-meter Universal Transverse Mercator grid ticks, zone 11, shown in blue

Where omitted, land lines have not been established



CONTOUR INTERVAL 40 FEET

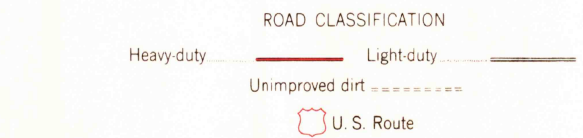
DOTTED LINES REPRESENT 10-FOOT CONTOURS

DATUM IS MEAN SEA LEVEL

THIS MAP COMPLIES WITH NATIONAL MAP ACCURACY STANDARDS  
FOR SALE BY U.S. GEOLOGICAL SURVEY, DENVER, COLORADO 80225, OR WASHINGTON, D.C. 20242  
A FOLDER DESCRIBING TOPOGRAPHIC MAPS AND SYMBOLS IS AVAILABLE ON REQUEST



QUADRANGLE LOCATION



ROAD CLASSIFICATION  
Heavy-duty — Light-duty  
Improved dirt —  
U.S. Route

U.S.G.S. BLUE EAGLE SPRINGS, NEV.  
N3830—W11530/15

1964

AMS 2861 II—SERIES V796

USGS  
Historical File  
Topographic Division

2540  
(FOREST HOME)

DEC 8 1965