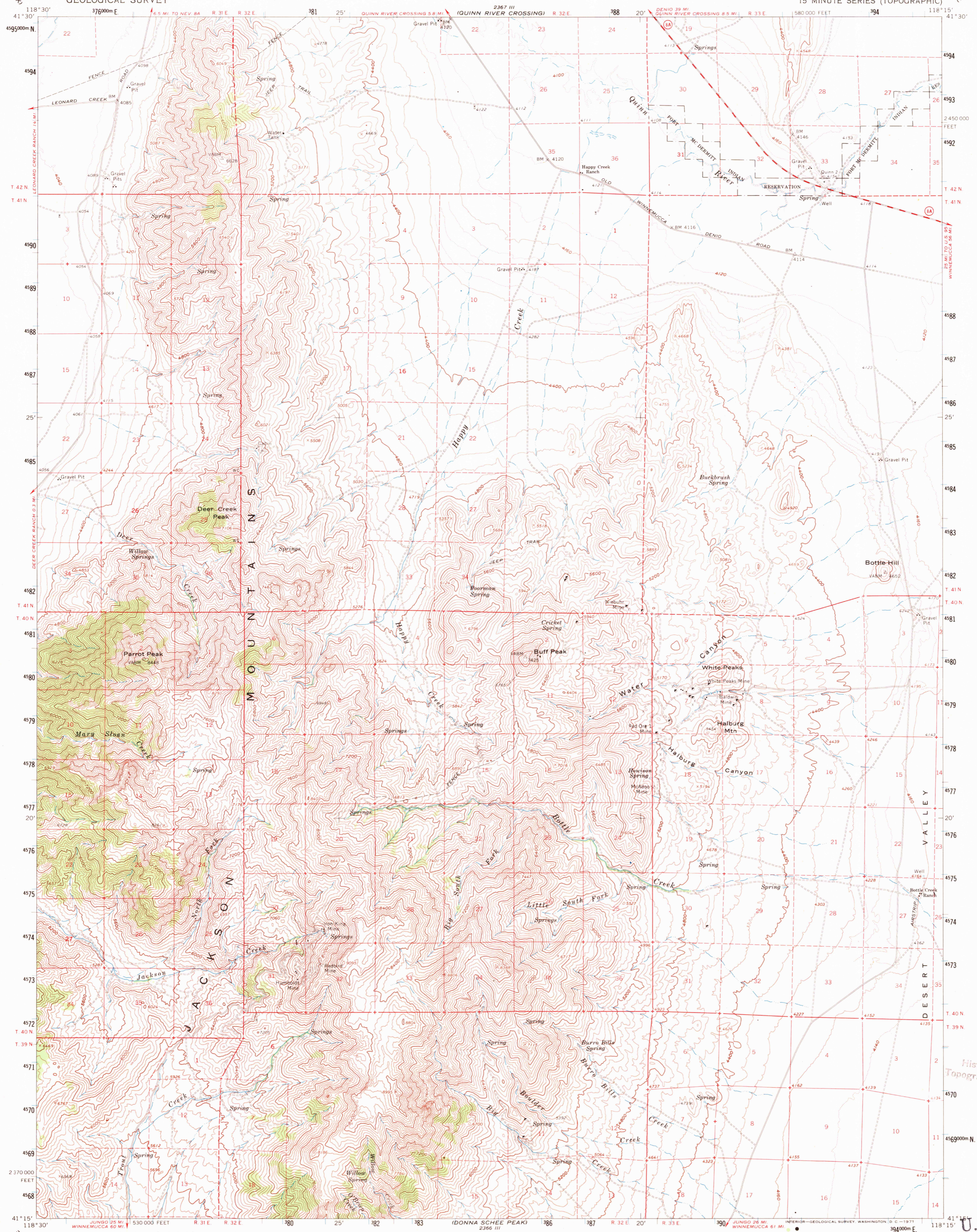
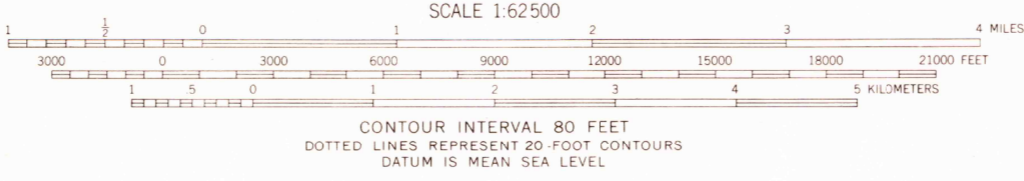
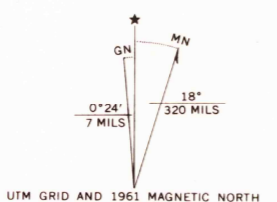


2367 III (PASS)



Mapped, edited, and published by the Geological Survey  
Control by USGS and USC&GS  
Topography by photogrammetric methods from aerial  
photographs taken 1959 and planetable surveys 1961  
Polyconic projection. 1927 North American datum  
10,000-foot grid based on Nevada coordinate system, west zone  
1000-meter Universal Transverse Mercator grid ticks,  
zone 11, shown in blue  
Where omitted, land lines have not been established



ROAD CLASSIFICATION  
Medium-duty — Light-duty  
Unimproved dirt — State Route

U.S.G.S.  
Historical File  
Topographic Division  
FILE COPY  
TOPOGRAPHIC DIVISION

JUL 26 1971

BOTTLE CREEK, NEV.  
N4115-W11815/15

1961

AMS 2366 IV—SERIES V796

FOR SALE BY U. S. GEOLOGICAL SURVEY, DENVER, COLORADO 80225 OR WASHINGTON, D. C. 20242  
A FOLDER DESCRIBING TOPOGRAPHIC MAPS AND SYMBOLS IS AVAILABLE ON REQUEST