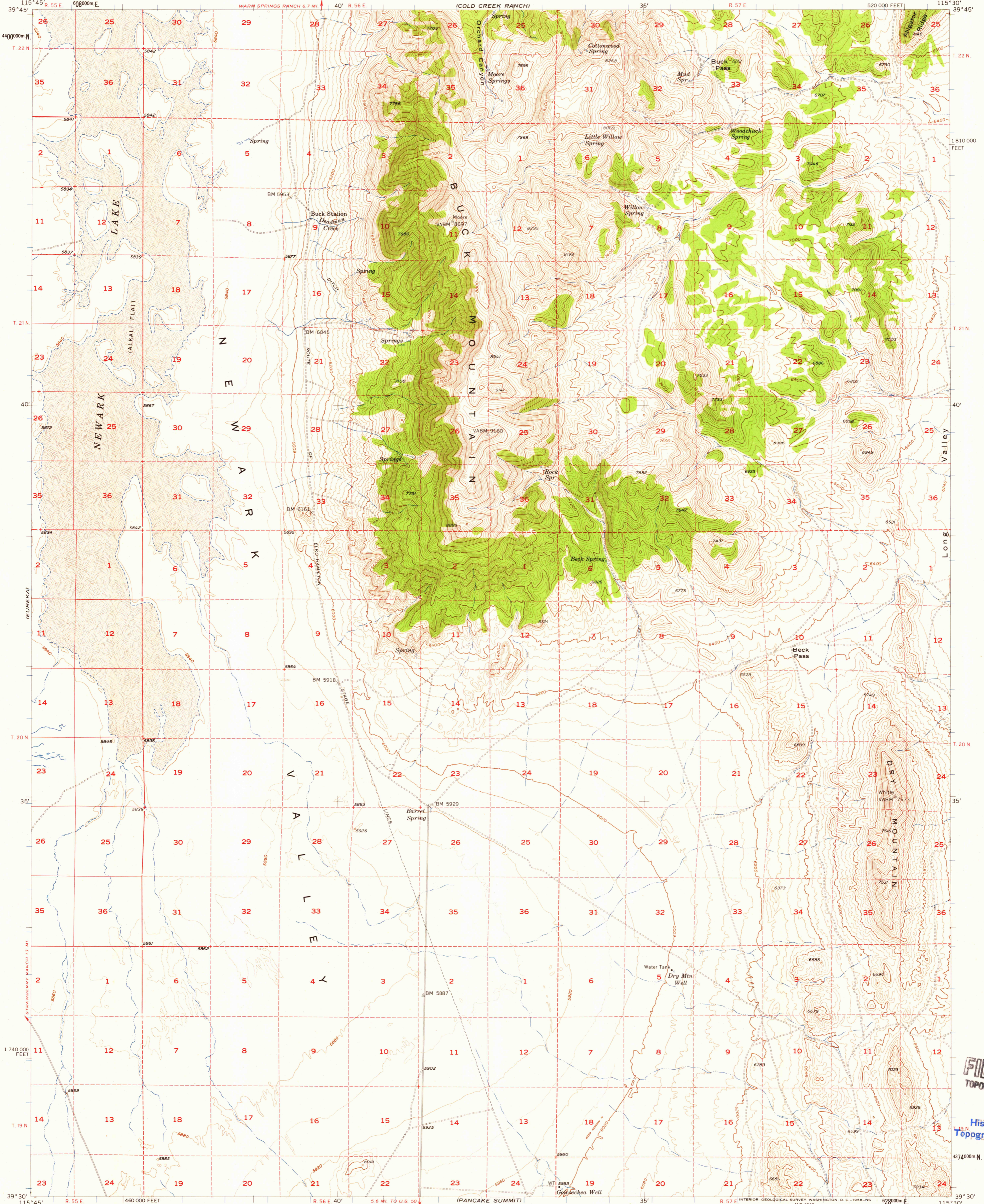


DIAMOND SPRINGS

UNITED STATES DEPARTMENT OF THE INTERIOR GEOLOGICAL SURVEY

STATE OF NEVADA CHARLES H. RUSSELL, GOVERNOR VERNON E. SCHEID, DIRECTOR, BUREAU OF MINES

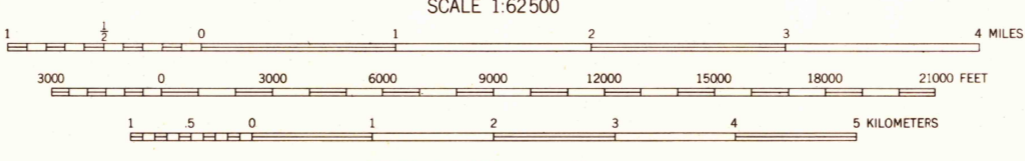
BUCK MOUNTAIN QUADRANGLE NEVADA—WHITE PINE CO. 15 MINUTE SERIES (TOPOGRAPHIC)



U.S.G.S. FILE COPY TOPOGRAPHIC DIVISION

USGS Historical File Topographic Division

Mapped, edited, and published by the Geological Survey Control by USGS and USCG&S Topography from aerial photographs by multiplex methods and by planetable surveys 1957. Aerial photographs taken 1950 Polyconic projection. 1927 North American datum 10,000-foot grid based on Nevada coordinate system, east zone 1000-meter Universal Transverse Mercator grid ticks, zone 11, shown in blue Dashed land lines indicate approximate locations



ROAD CLASSIFICATION Light duty Unimproved dirt



BUCK MOUNTAIN, NEV. N 3930—W 11530/15 1957

THIS MAP COMPLIES WITH NATIONAL MAP ACCURACY STANDARDS FOR SALE BY U. S. GEOLOGICAL SURVEY, DENVER 2, COLORADO OR WASHINGTON 25, D. C. A FOLDER DESCRIBING TOPOGRAPHIC MAPS AND SYMBOLS IS AVAILABLE ON REQUEST

JAN 23 1959 1455