

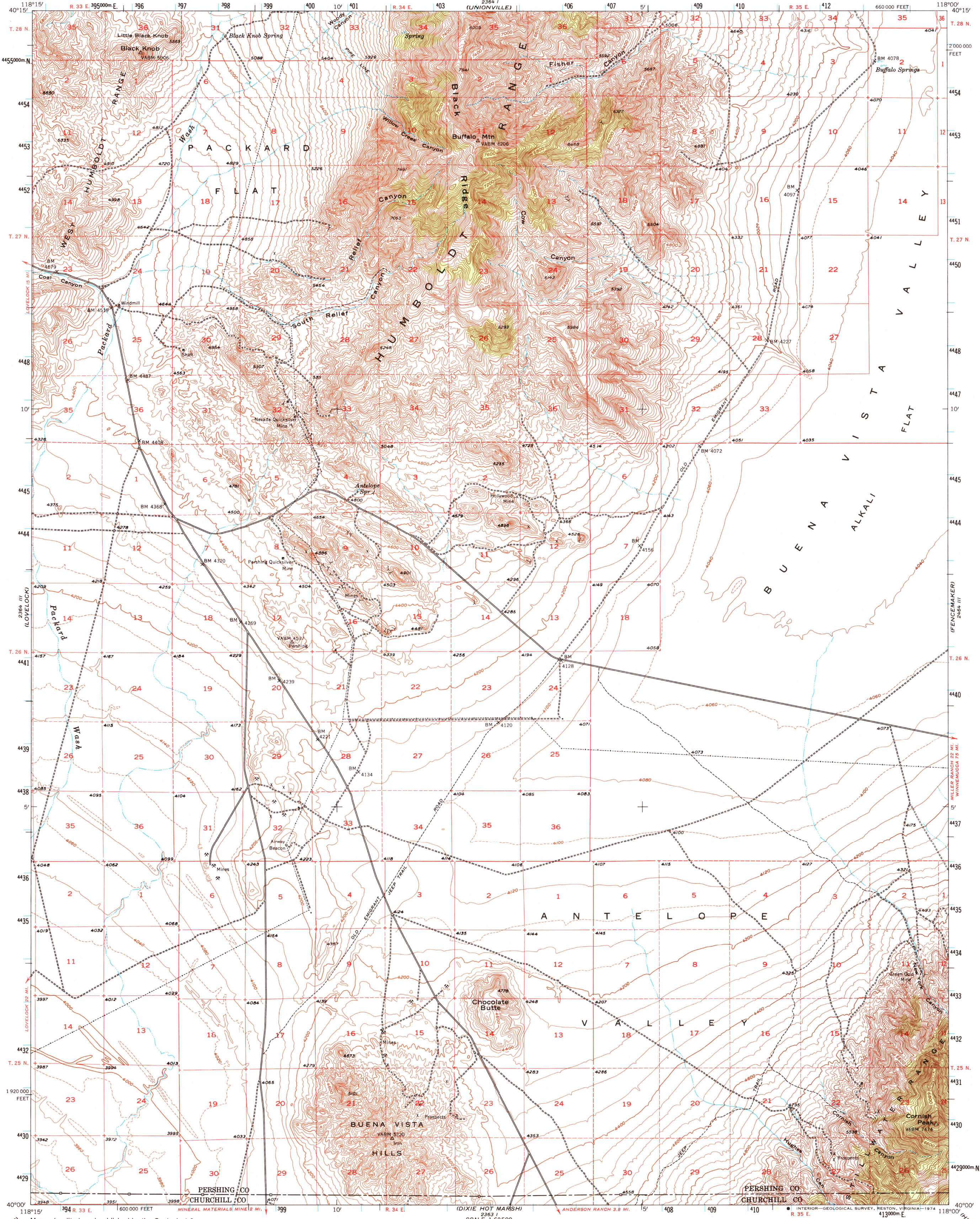
2864 IV  
(ORCAN)

UNITED STATES  
DEPARTMENT OF THE INTERIOR  
GEOLOGICAL SURVEY

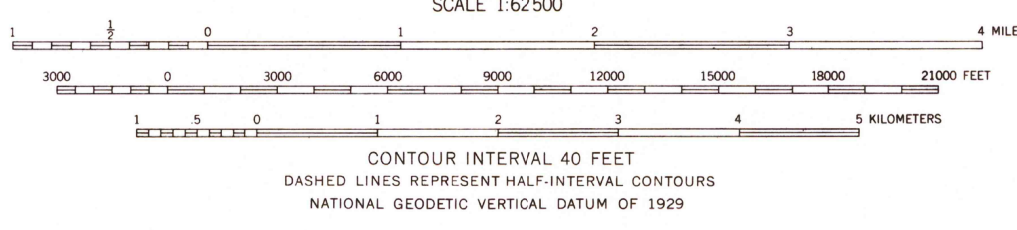
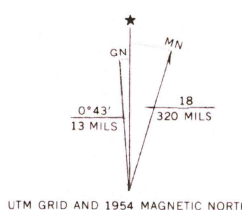
STATE OF NEVADA  
REPRESENTED BY THE  
BUREAU OF MINES

BUFFALO MTN. QUADRANGLE  
NEVADA  
15 MINUTE SERIES (TOPOGRAPHIC)

2864 IV  
(KYLE HOT SPRINGS)



Mapped, edited, and published by the Geological Survey  
Control by USGS and USCGS  
Topography from aerial photographs by multiplex methods and by  
plane-table surveys 1954. Aerial photographs taken 1952  
Polyconic projection. 1927 North American datum  
10,000-foot grid based on Nevada coordinate system, west zone  
1000 meter Universal Transverse Mercator grid ticks,  
zone 11, shown in blue  
Dashed land lines indicate approximate locations



ROAD CLASSIFICATION  
1963

Light-city ————— Unimproved dirt - - - - -

BUFFALO MTN., NEV.  
N4000-W11800/15  
1954  
AMS 2364 II-SERIES V796

THIS MAP COMPLIES WITH NATIONAL MAP ACCURACY STANDARDS  
FOR SALE BY U. S. GEOLOGICAL SURVEY, DENVER, COLORADO 80225, OR RESTON, VIRGINIA 22092  
A FOLDER DESCRIBING TOPOGRAPHIC MAPS AND SYMBOLS IS AVAILABLE ON REQUEST