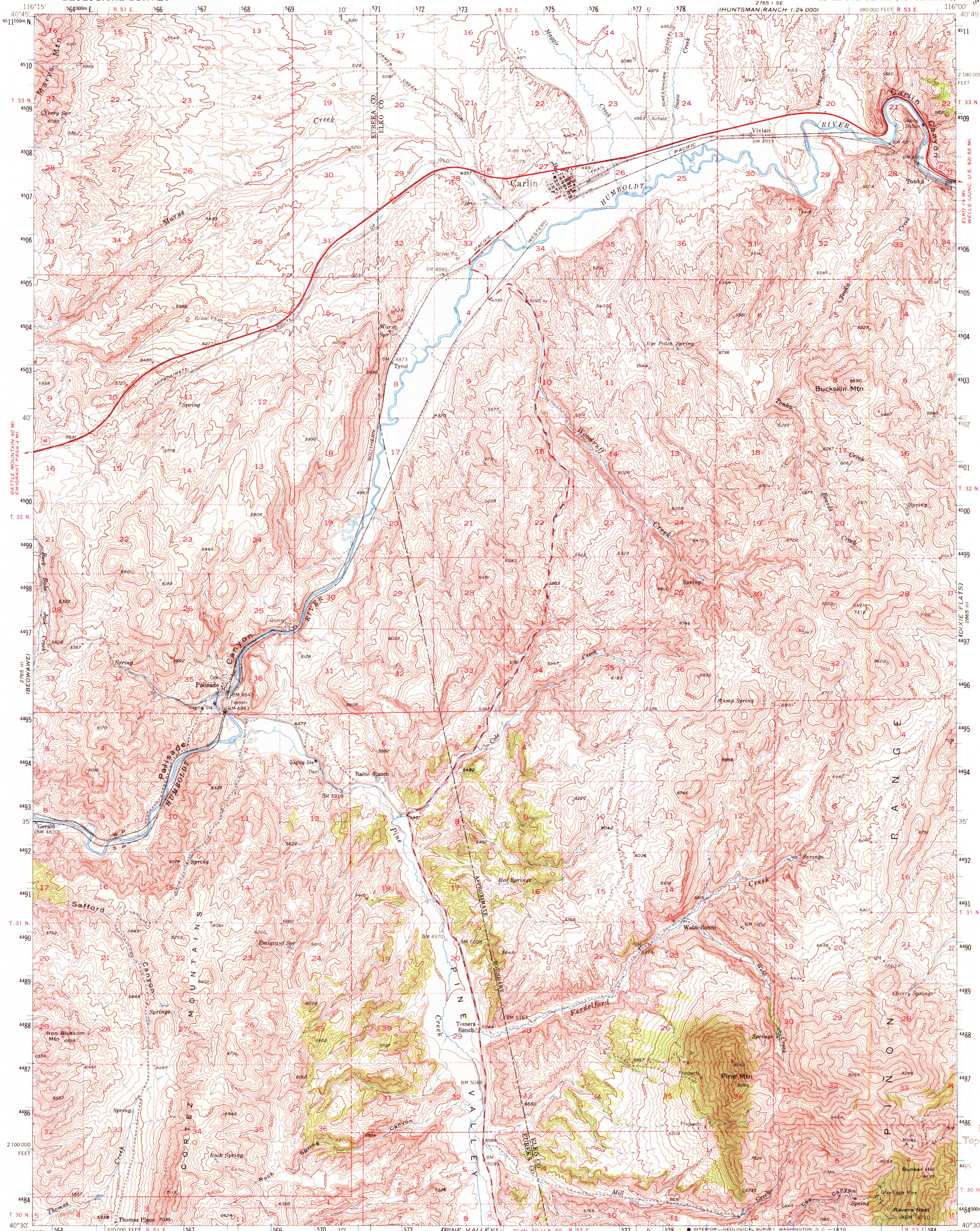
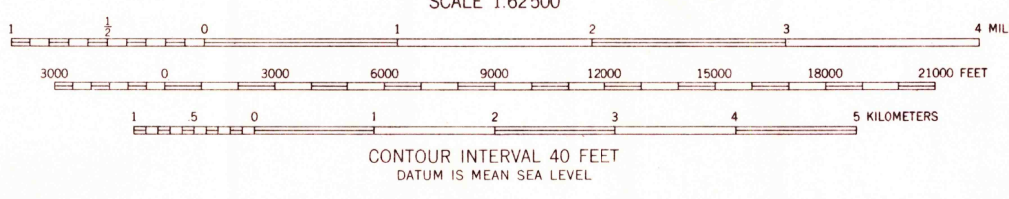
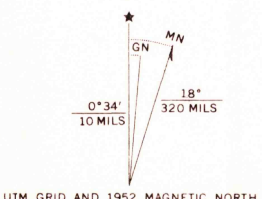


2865 IV SW  
(HUNTERMAN RANCH 1:24 000)



Mapped, edited, and published by the Geological Survey  
Control by USGS and USC&GS  
Topography from aerial photographs by multiplex methods  
Aerial photographs taken 1950. Field check 1952  
Polyconic projection. 1927 North American datum  
10,000-foot grid based on Nevada coordinate system, east zone  
1000-meter Universal Transverse Mercator grid ticks,  
zone 11, shown in blue  
Dashed land lines indicate approximate locations



**U.S.G.S. FILE COPY TOPOGRAPHIC DIVISION**

ROAD CLASSIFICATION

|             |                 |
|-------------|-----------------|
| Heavy-duty  | Light-duty      |
| Medium-duty | Unimproved dirt |
| U. S. Route | State Route     |

CARLIN, NEV.  
N4030-W11600/15  
1952  
AMS 2765 II—SERIES V796

USGS  
Historical File  
Topographic Division

2980  
JUN 19 1970