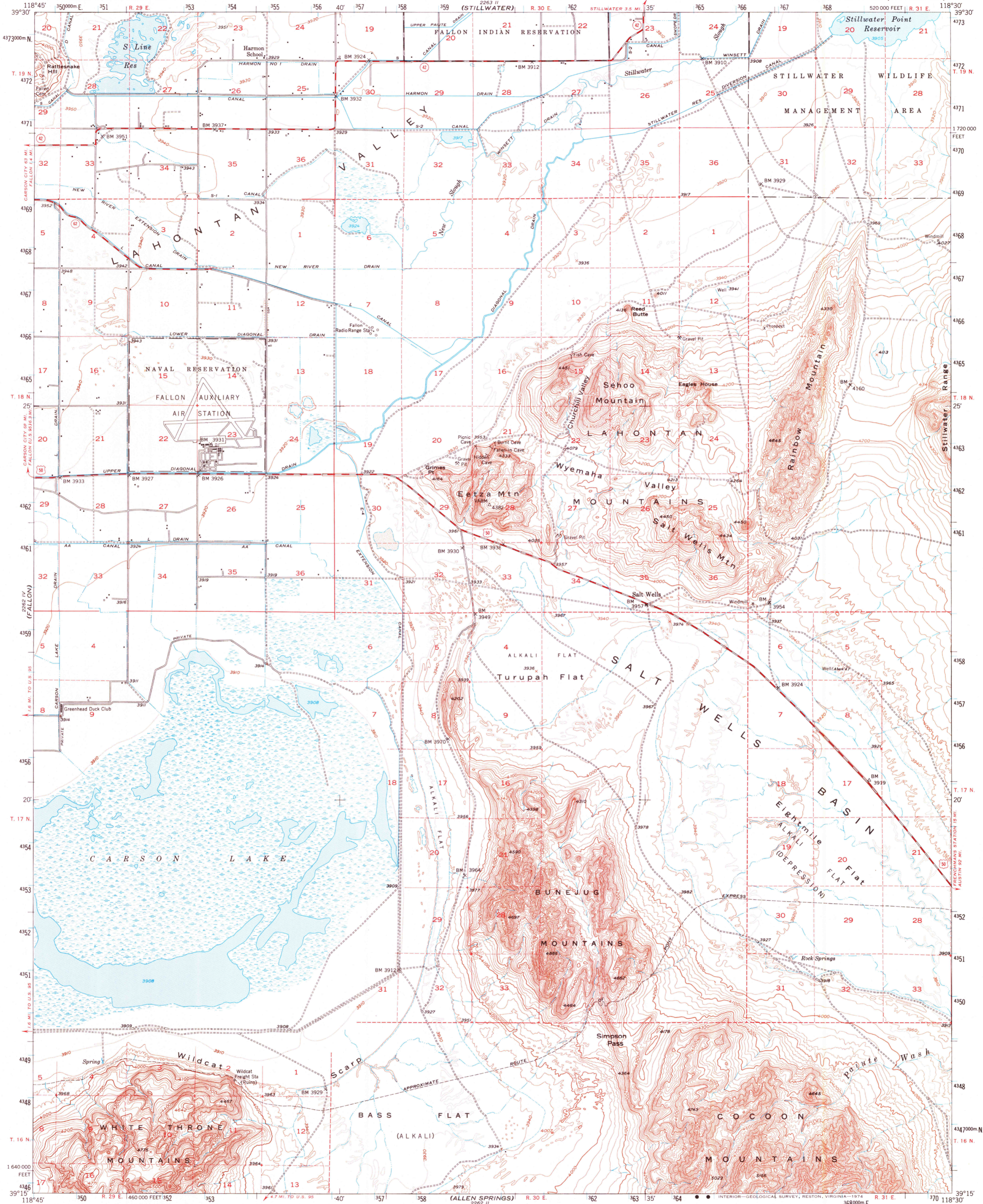


(SODA LAKE)

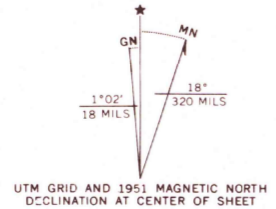
UNITED STATES  
DEPARTMENT OF THE INTERIOR  
GEOLOGICAL SURVEY

CARSON LAKE QUADRANGLE  
NEVADA-CHURCHILL CO.  
15 MINUTE SERIES (TOPOGRAPHIC)

2383 11' 29" W  
1:24 000  
FOX TAIL LAKE



Mapped, edited, and published by the Geological Survey  
Control by USGS and USC&GS  
Topography from aerial photographs by multiplex methods  
and by plane-table surveys 1951. Aerial photographs taken 1948  
Polyconic projection. 1927 North American datum  
10,000-foot grid based on Nevada coordinate system, west zone  
Dashed land lines indicate approximate locations  
Unchecked elevations are shown in brown  
1000-meter Universal Transverse Mercator grid ticks,  
zone 11, shown in blue



CONTOUR INTERVAL 20 FEET  
DOTTED LINES REPRESENT HALF-INTERVAL CONTOURS  
DATUM IS MEAN SEA LEVEL

ROAD CLASSIFICATION

Heavy-duty	4 LANE (CLANE)	Light-duty
Medium-duty	4 LANE (CLANE)	Unimproved dirt
	U.S. Route	State Route

CARSON LAKE, NEV.  
N3915-W11830/15

1951  
AMS 2262 I-SERIES V796

THIS MAP COMPLIES WITH NATIONAL MAP ACCURACY STANDARDS  
FOR SALE BY U.S. GEOLOGICAL SURVEY, DENVER, COLORADO 80225, OR RESTON, VIRGINIA 22092  
A FOLDER DESCRIBING TOPOGRAPHIC MAPS AND SYMBOLS IS AVAILABLE ON REQUEST

(WEBER RESERVOIR)