

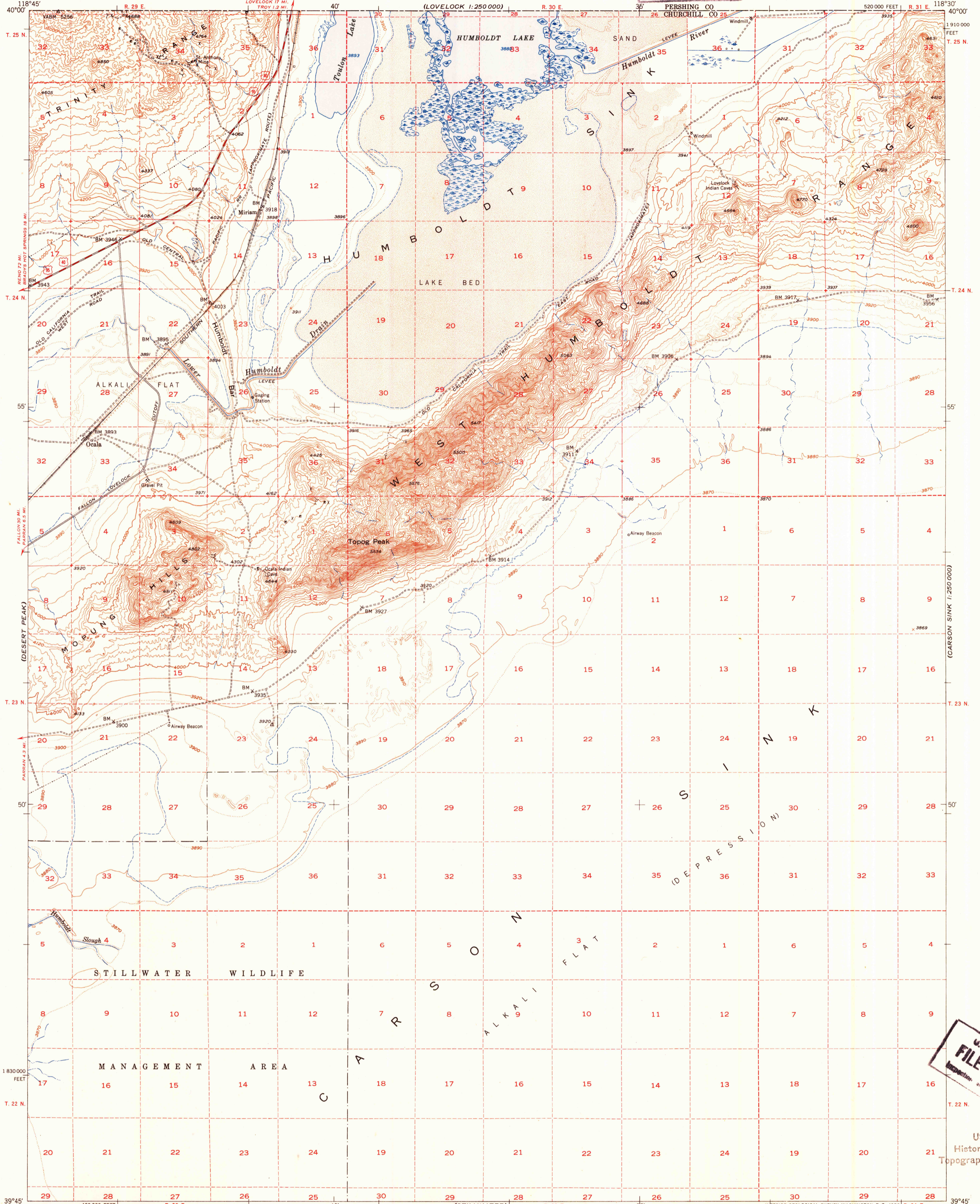
(LOVELOCK 1:250 000)

UNITED STATES
DEPARTMENT OF THE INTERIOR
GEOLOGICAL SURVEY

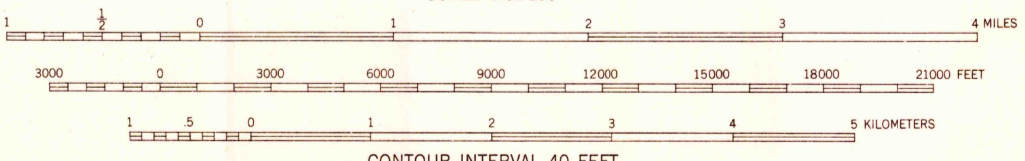
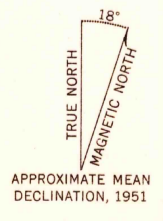
U. S. G. S.
FILE COPY
Inspection and Editing

CARSON SINK QUADRANGLE
NEVADA-CHURCHILL CO.
15 MINUTE SERIES (TOPOGRAPHIC)

(LOVELOCK 1:250 000)



Mapped, edited, and published by the Geological Survey
Control by USGS and USC&GS
Topography from aerial photographs by multiplex methods
and by plane-table surveys 1951. Aerial photographs taken 1948
Polyconic projection. 1927 North American datum
10,000-foot grid based on Nevada coordinate system, west zone
Dashed land lines indicate approximate locations



ROAD CLASSIFICATION
Heavy-duty 4 LANE 6 LANE Light-duty
Medium-duty 4 LANE 6 LANE Unimproved dirt
U. S. Route State Route

CARSON SINK, NEV.
N3945-W11830/15

THIS MAP COMPLIES WITH NATIONAL MAP ACCURACY STANDARDS
FOR SALE BY U. S. GEOLOGICAL SURVEY, FEDERAL CENTER, DENVER, COLORADO OR WASHINGTON 25, D. C.
A FOLDER DESCRIBING TOPOGRAPHIC MAPS AND SYMBOLS IS AVAILABLE ON REQUEST

RETURN TO:
USGS AND HISTORICAL MAP ARCHIVES

1951

U. S. G. S.
FILE COPY
Inspection and Editing

USGS
Historical File
Topographic Division

MAR 10 1953
2095