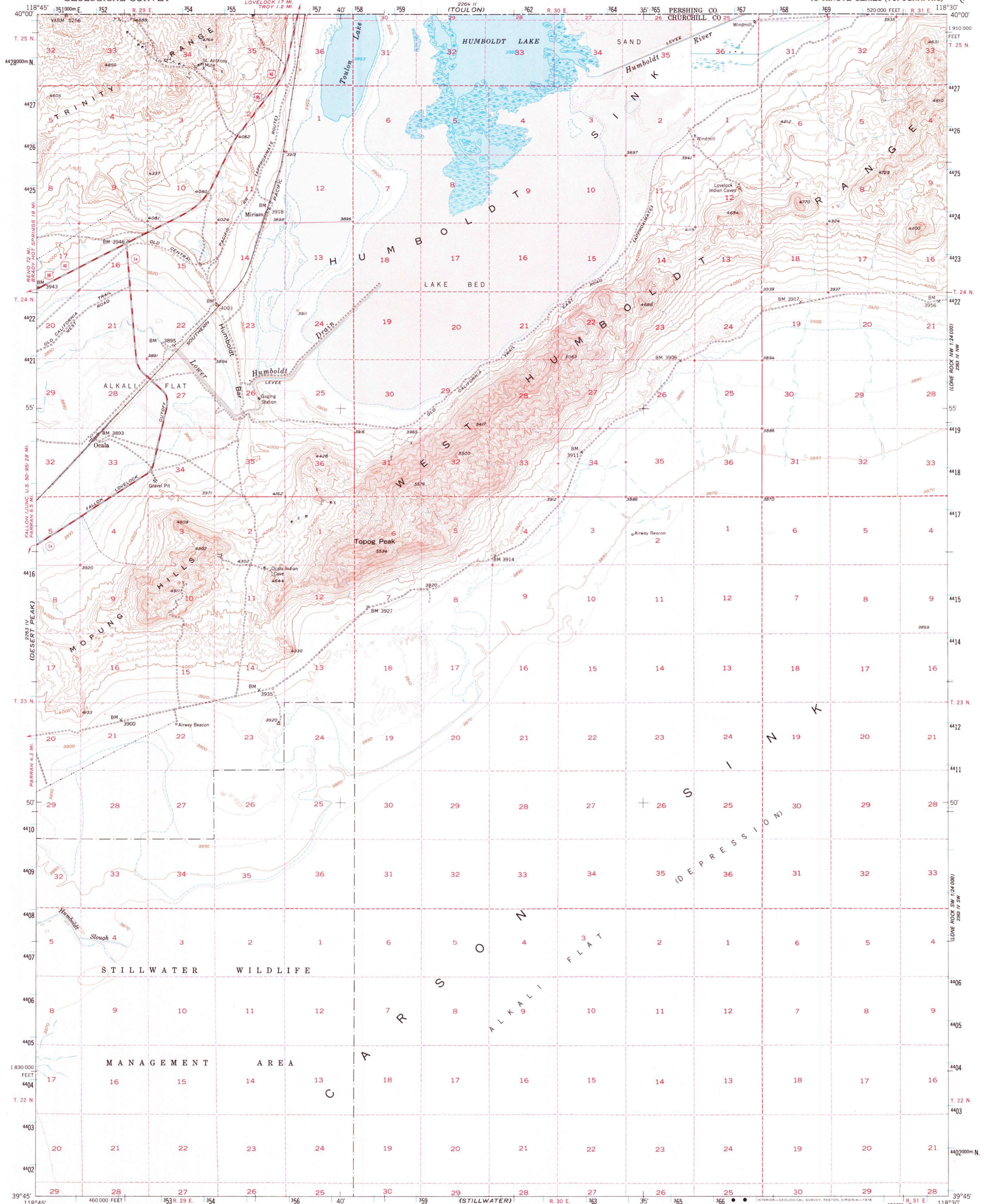
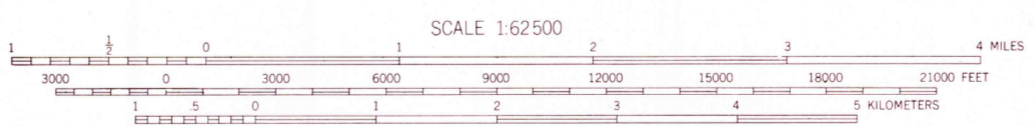
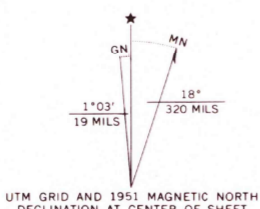


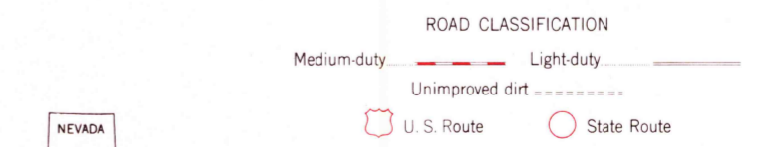
2263 III
(LOVELOCK)



Mapped, edited, and published by the Geological Survey
Control by USGS and USC&GS
Topography from aerial photographs by multiplex methods
and by plane-table surveys 1951. Aerial photographs taken 1948
and 1951.
Polyconic projection. 1927 North American datum
10,000-foot grid based on Nevada coordinate system, west zone
Dashed land lines indicate approximate locations
1000-meter Universal Transverse Mercator grid ticks,
zone 11, shown in blue



CONTOUR INTERVAL 40 FEET
DOTTED LINES REPRESENT 10 FOOT CONTOURS
NATIONAL GEODETIC VERTICAL DATUM OF 1929



THIS MAP COMPLIES WITH NATIONAL MAP ACCURACY STANDARDS
FOR SALE BY U.S. GEOLOGICAL SURVEY, DENVER, COLORADO 80225, OR RESTON, VIRGINIA 22092
A FOLDER DESCRIBING TOPOGRAPHIC MAPS AND SYMBOLS IS AVAILABLE ON REQUEST

CARSON SINK, NEV.
N3945-W11830/15
1951
AMS 2263 I-SERIES V796

USGS
Historical File
Topographic Division

APR 04 1978

3300