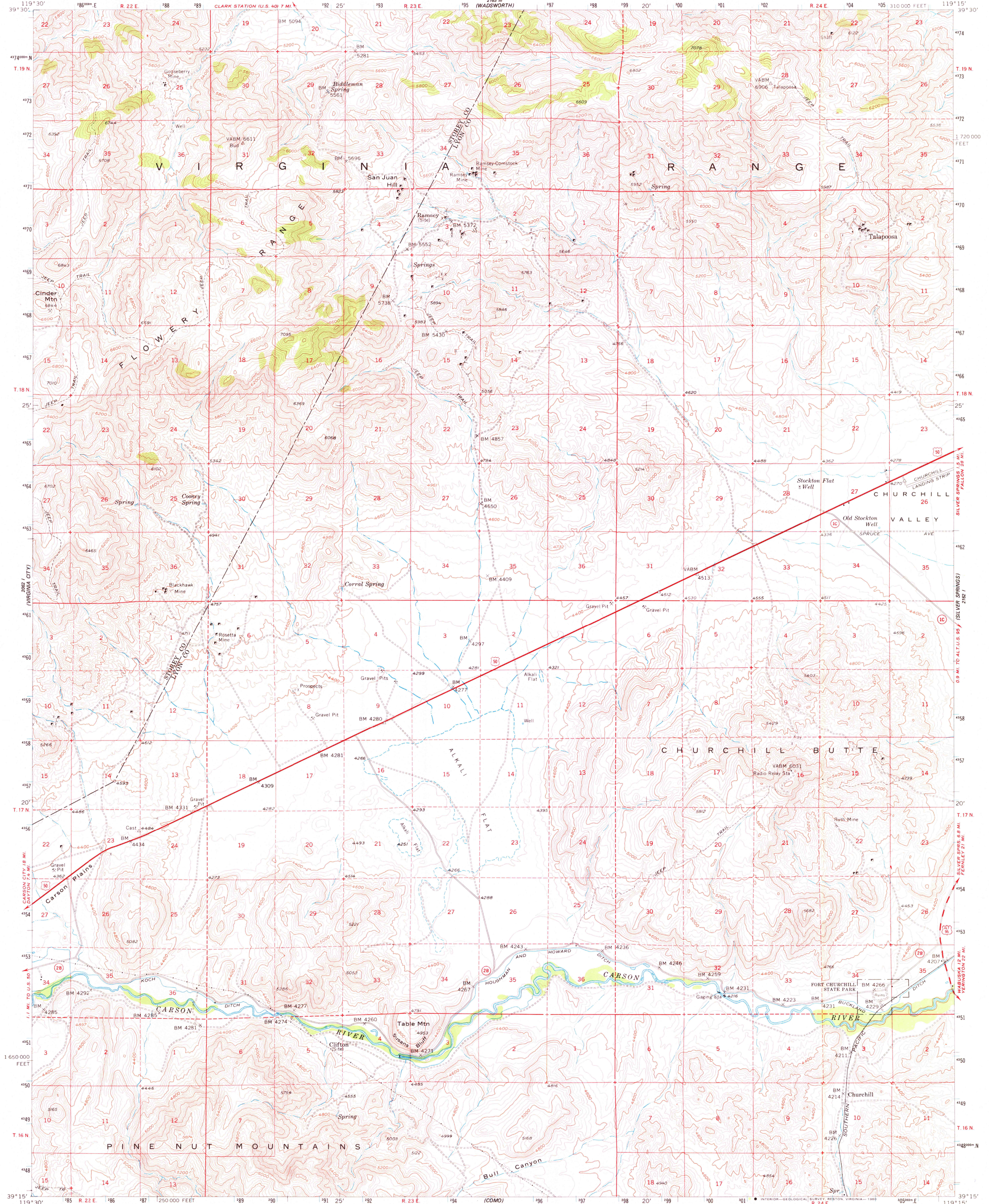
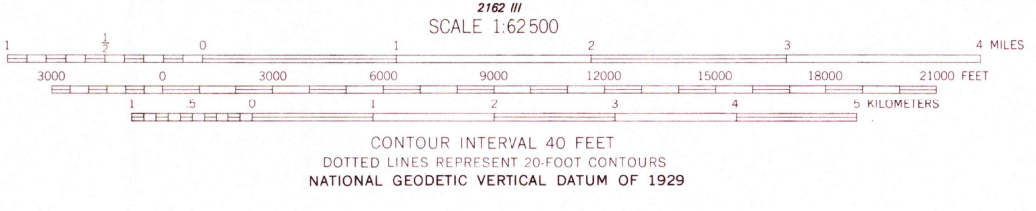
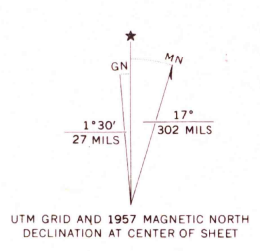


UNITED STATES  
DEPARTMENT OF THE INTERIOR  
GEOLOGICAL SURVEY

CHURCHILL BUTTE QUADRANGLE  
NEVADA  
15 MINUTE SERIES (TOPOGRAPHIC)



Mapped, edited, and published by the Geological Survey  
Control by USGS and USCGS  
Topography from aerial photographs by photogrammetric methods  
Aerial photographs taken 1954. Field check 1957  
Polyconic projection. 1927 North American datum  
10,000-foot grid based on Nevada coordinate system,  
west zone  
1000-meter Universal Transverse Mercator grid ticks,  
zone 11, shown in blue  
To place on the predicted North American Datum 1983  
move the projection lines 13 meters north and 88 meters east  
There may be private inholdings within the boundaries of  
the National or State reservations shown on this map



ROAD CLASSIFICATION

Heavy duty	Light duty
Medium duty	Unimproved dirt
U. S. Route	State Route

CHURCHILL BUTTE, NEV.  
N3915-W11915/15

USGS  
Historical File  
Topographic Division

1957  
DMA 2162 IV-SERIES V796

SEP 26 1980

3400