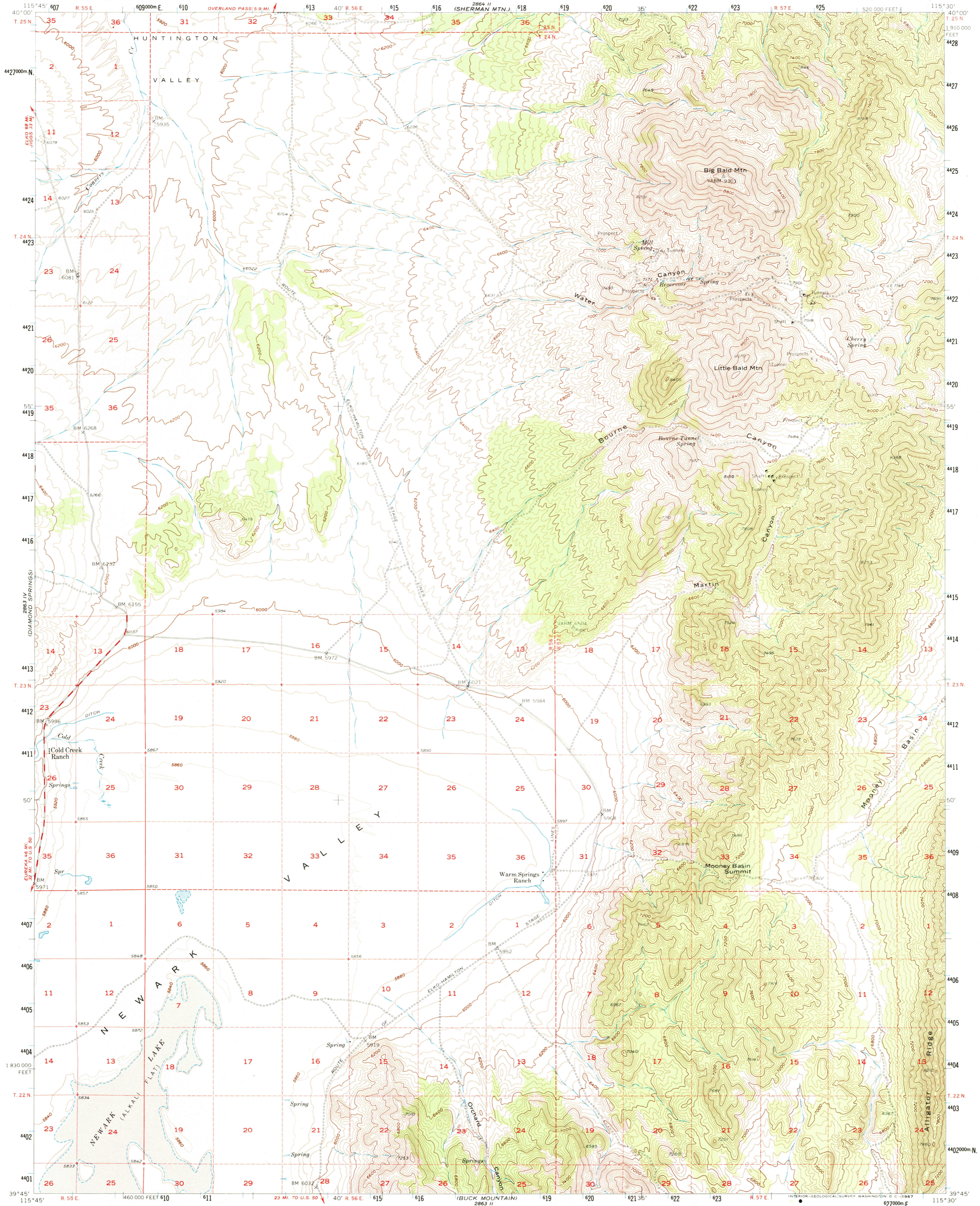
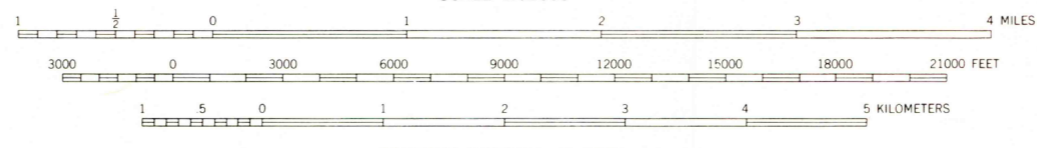
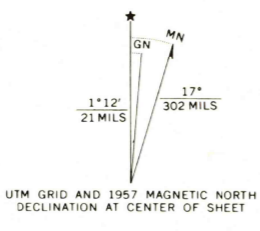


UNITED STATES  
DEPARTMENT OF THE INTERIOR  
GEOLOGICAL SURVEY

COLD CREEK RANCH QUADRANGLE  
NEVADA—WHITE PINE CO.  
15 MINUTE SERIES (TOPOGRAPHIC)



Mapped, edited, and published by the Geological Survey  
Control by USGS and USC&GS  
Topography from aerial photographs by Keish plotter  
and by planimeter surveys 1957. Aerial photographs taken 1 54  
Polyconic projection. 1927 North American datum  
10,000-foot grid based on Nevada coordinate system,  
east zone  
1000-meter Universal Transverse Mercator grid ticks,  
zone 11, shown in blue  
Dashed lines indicate approximate locations  
Certain land lines are omitted because of insufficient data



CONTOUR INTERVAL 40 FEET  
DASHED LINES REPRESENT 20-FOOT CONTOURS  
DATUM IS MEAN SEA LEVEL



ROAD CLASSIFICATION  
Medium duty ——— Light-duty ———  
Unimproved dirt - - - - -

COLD CREEK RANCH, NEV.  
N3945—W11530/15

THIS MAP COMPLIES WITH NATIONAL MAP ACCURACY STANDARDS  
FOR SALE BY U. S. GEOLOGICAL SURVEY, DENVER, COLORADO 80225, OR RESTON, VIRGINIA 22092  
A FOLDER DESCRIBING TOPOGRAPHIC MAPS AND SYMBOLS IS AVAILABLE ON REQUEST

1957  
AMS 2863 1—SERIES V796

