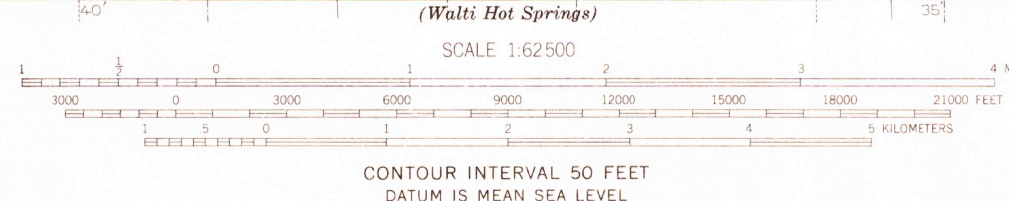
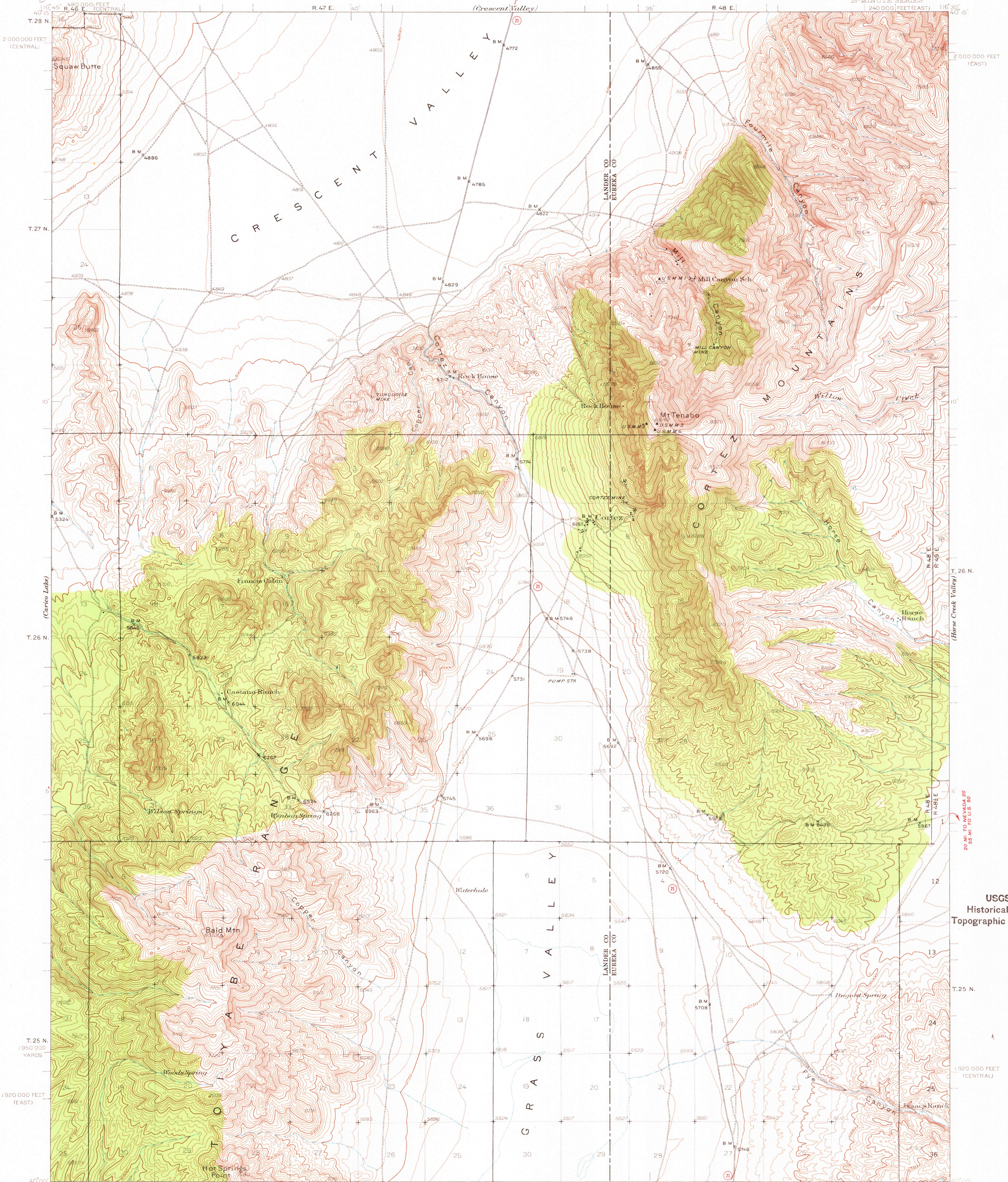


UNITED STATES
DEPARTMENT OF THE INTERIOR
GEOLOGICAL SURVEY

NEVADA
CORTEZ QUADRANGLE
15-MINUTE SERIES
240 000 FEET (EAST)



Polyconic projection, 1927 North American datum.
5000 yard grid based on U.S. zone system, F
10000 foot grids based on Nevada (East) and
Nevada (Central) rectangular coordinate systems.

USGS CLASSIFICATION
Heavy 4400-4499
Medium 4500-4599
Light 4600-4699
Unimproved dirt
U.S. Route
State Route

CORTEZ, NEV.
N4000-W11630/15
1938

FOR SALE BY U.S. GEOLOGICAL SURVEY, DENVER, COLORADO 80225 OR WASHINGTON, D. C. 20541
A FOLDER DESCRIBING TOPOGRAPHIC MAPS AND SYMBOLS IS AVAILABLE ON REQUEST

USGS
TOPOGRAPHIC DIVISION

4315
OCT 15 1969