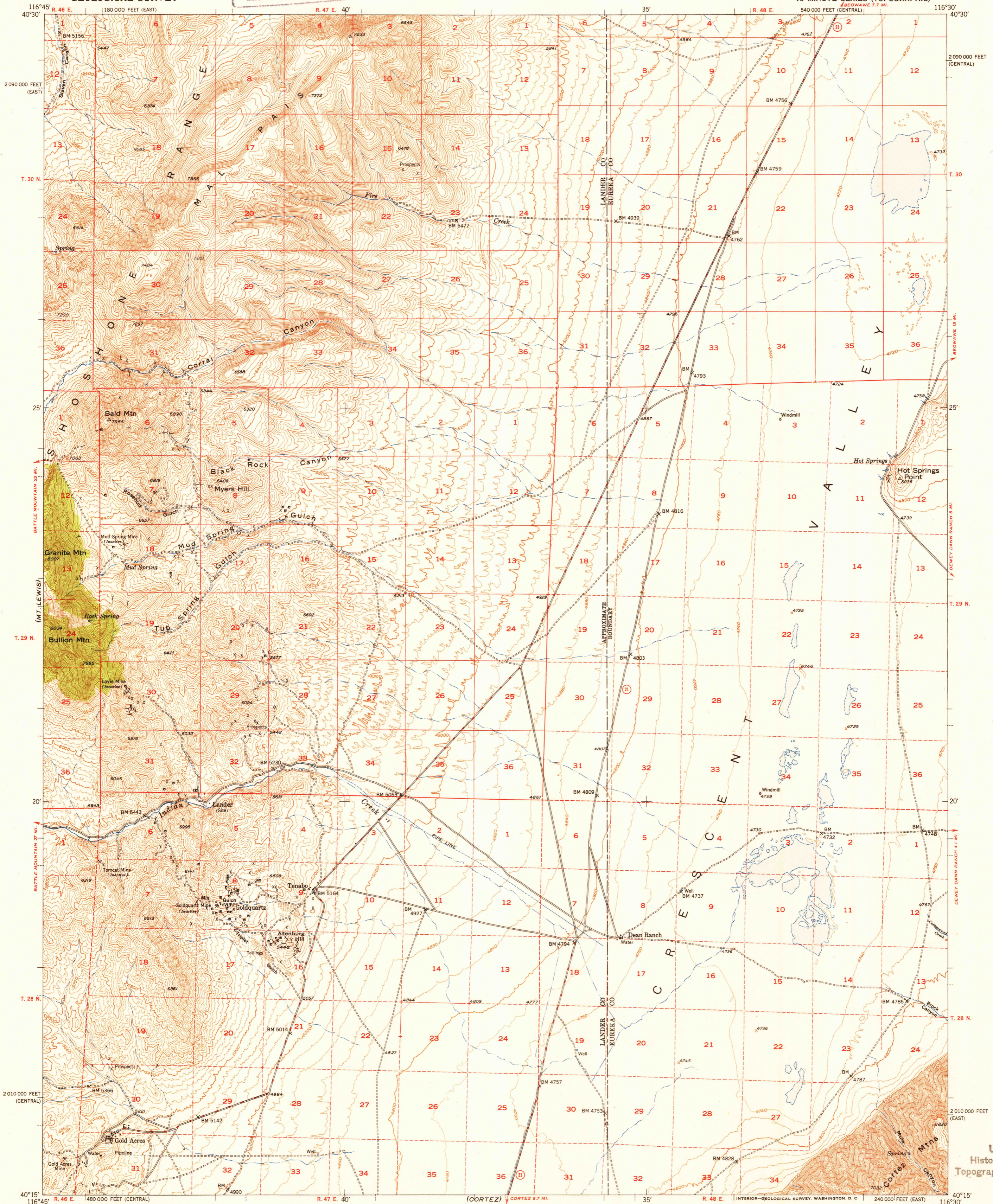
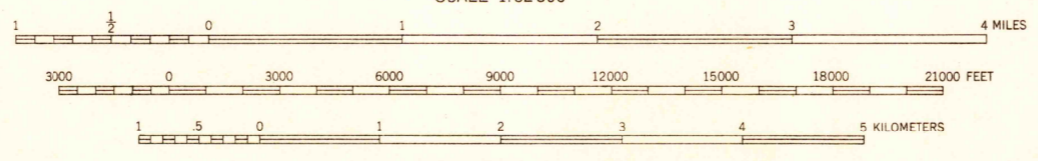
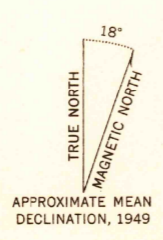


U.S.G.S.
FILE COPY
Inspection and Editing



Mapped, edited, and published by the Geological Survey
Control by USGS and USC&GS
Topography from aerial photographs by multiplex methods,
and by plane-table surveys 1949
Aerial photographs taken 1946
Polyconic projection. 1927 North American datum
10,000-foot grids based on Nevada coordinate system,
central and east zones
Dashed land lines indicate approximate location



CONTOUR INTERVAL 40 FEET
DOTTED LINES REPRESENT HALF-INTERVAL CONTOURS
DATUM IS MEAN SEA LEVEL

ROAD CLASSIFICATION
HARD-SURFACE ALL WEATHER ROADS DRY WEATHER ROADS
Heavy-duty **1 LANE 18 LANE** Improved dirt
Medium-duty **1 LANE 18 LANE** Unimproved dirt
Loose surface, graded, or narrow hard-surface
U.S. Route State Route

U.S.G.S.
FILE COPY
Inspection and Editing

CRESCENT VALLEY, NEV.
N4015-W11630/15
EDITION OF 1950

THIS MAP COMPLIES WITH NATIONAL MAP ACCURACY STANDARDS
FOR SALE BY U. S. GEOLOGICAL SURVEY, FEDERAL CENTER, DENVER, COLORADO OR WASHINGTON 25, D. C.
A FOLDER DESCRIBING TOPOGRAPHIC MAPS AND SYMBOLS IS AVAILABLE ON REQUEST

USGS
Historical File
Topographic Division