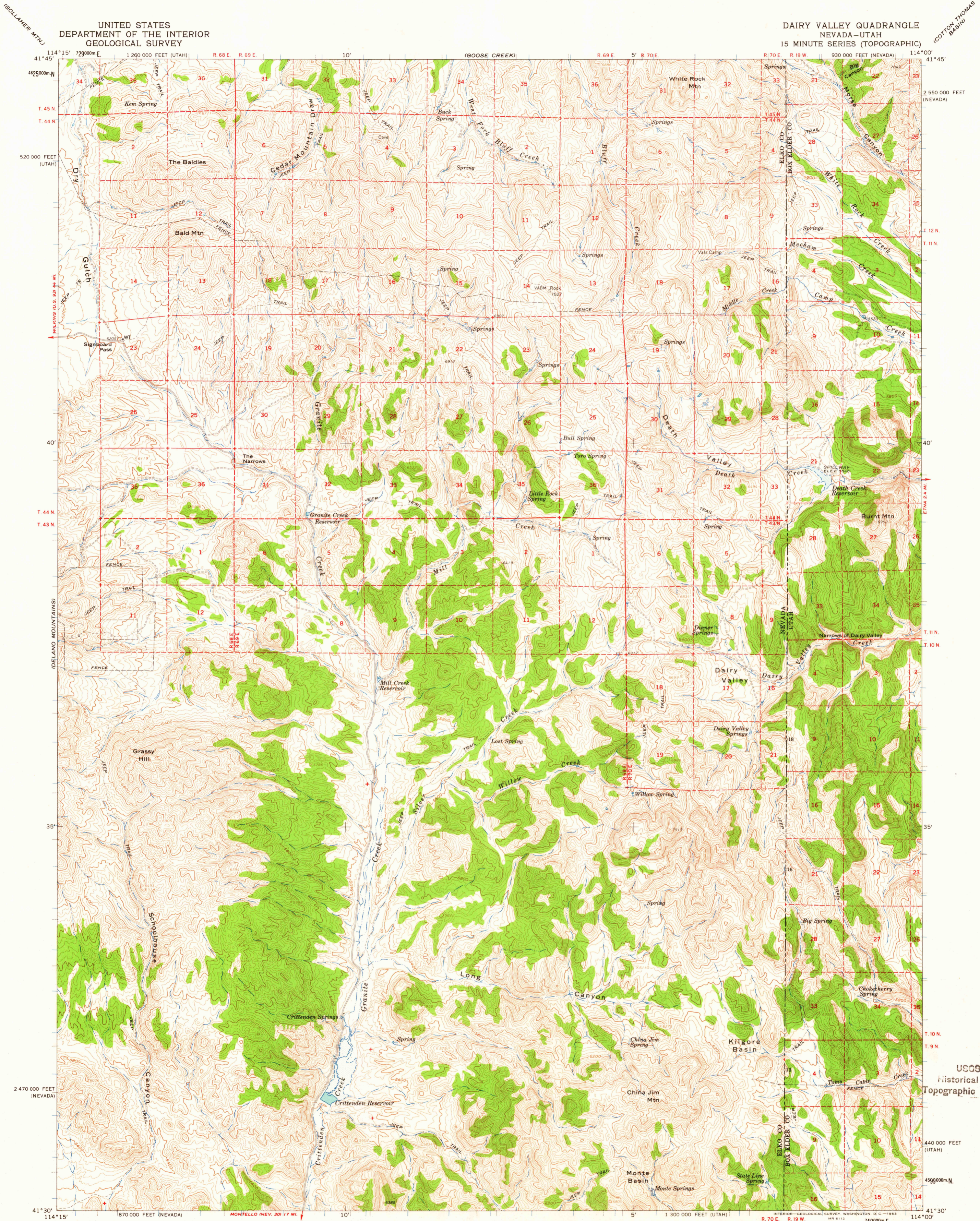
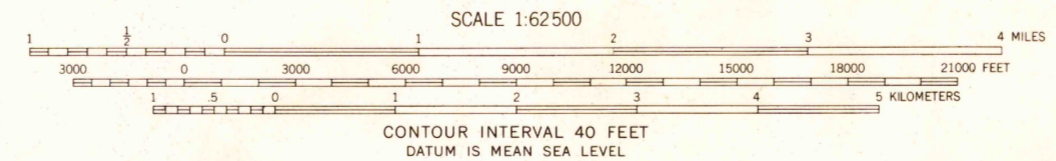
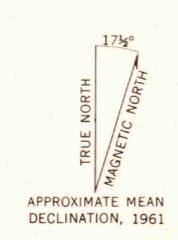


UNITED STATES
DEPARTMENT OF THE INTERIOR
GEOLOGICAL SURVEY

DAIRY VALLEY QUADRANGLE
NEVADA-UTAH
15 MINUTE SERIES (TOPOGRAPHIC)



Mapped, edited, and published by the Geological Survey
Control by USGS and USC&GS
Topography by photogrammetric methods from aerial photographs taken 1956. Field checked 1961
Polyconic projection. 1927 North American datum, east zone and Utah coordinate system, north zone
10,000-foot grids based on Nevada coordinate system, north zone and Utah coordinate system, north zone
1000-meter Universal Transverse Mercator grid ticks, zone 11, shown in blue
Certain land lines are omitted because of insufficient data
Area covered by dashed light-blue pattern is subject to controlled inundation to 5225 feet



ROAD CLASSIFICATION
Light-duty ————— Unimproved dirt - - - - -

THIS MAP COMPLIES WITH NATIONAL MAP ACCURACY STANDARDS
FOR SALE BY U.S. GEOLOGICAL SURVEY, DENVER 25, COLORADO OR WASHINGTON 25, D.C.
A FOLDER DESCRIBING TOPOGRAPHIC MAPS AND SYMBOLS IS AVAILABLE ON REQUEST

DAIRY VALLEY, NEV.-UTAH
N4130-W11400/15
1961

2585

JUN - 7 1963

USGS
Historical File
Topographic Division

114°15' 729000m E 1 260 000 FEET (UTAH) R 68 E R 69 E 10' (GOOSE CREEK) R 69 E 5' R 70 E R 70 E R 19 W 930 000 FEET (NEVADA) 114°00' 41°45' 4625000m N T 45 N T 44 N 520 000 FEET (UTAH) 40' T 44 N T 43 N 40' 35' 2470 000 FEET (NEVADA) 114°15' 870 000 FEET (NEVADA) MONTELLO NEV. 301 17 MI 10' 5' 1 300 000 FEET (UTAH) 114°00' 41°30' 4599000m N

2 550 000 FEET (NEVADA) T 12 N T 11 N T 10 N T 9 N T 8 N T 7 N T 6 N T 5 N T 4 N T 3 N T 2 N T 1 N 2 550 000 FEET (NEVADA) 440 000 FEET (UTAH) 4599000m N

(GOLLAHER MTN.)

(COTTON THOMAS BASIN)