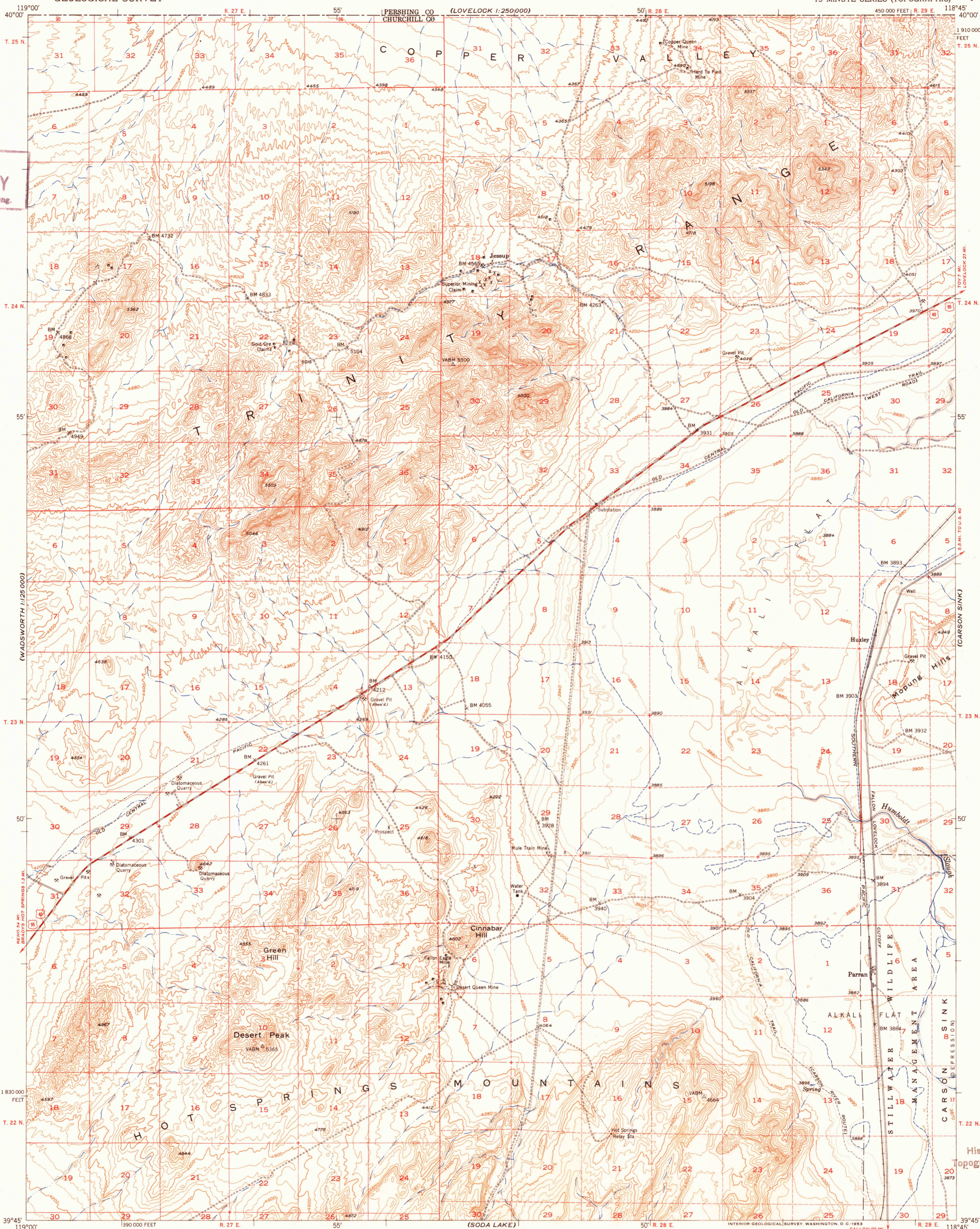


(LOVELOCK)
1:250,000

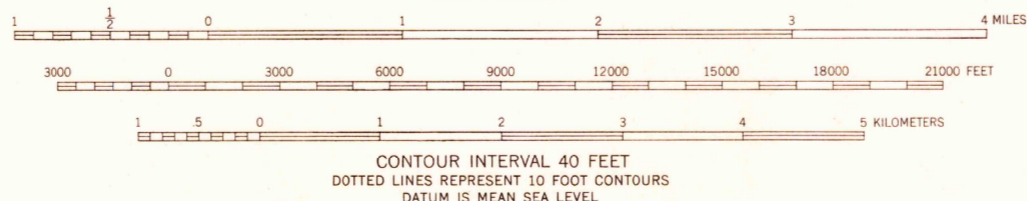


U.S.G.S.
FILE COPY
Inspection and Editing.

USGS
Historical File
Topographic Division

Mapped, edited, and published by the Geological Survey
Control by USGS and USC&GS
Topography from aerial photographs by multiplex methods
and by plane-table surveys 1951. Aerial photographs taken 1948
Polyconic projection. 1927 North American datum
10,000-foot grid based on Nevada coordinate system, west zone
Dashed land lines indicate approximate locations
Unchecked elevations are shown in brown

TRUE NORTH
MAGNETIC NORTH
APPROXIMATE MEAN
DECLINATION, 1951



ROAD CLASSIFICATION
Heavy-duty 4 LANE 6 LANE Light-duty
Medium-duty 4 LANE 6 LANE Unimproved dirt
U.S. Route State Route

U.S.G.S.
FILE COPY
Inspection and Editing.

DESERT PEAK, NEV.
N3945-W11845/15
1951

JAN 9 1953

2660