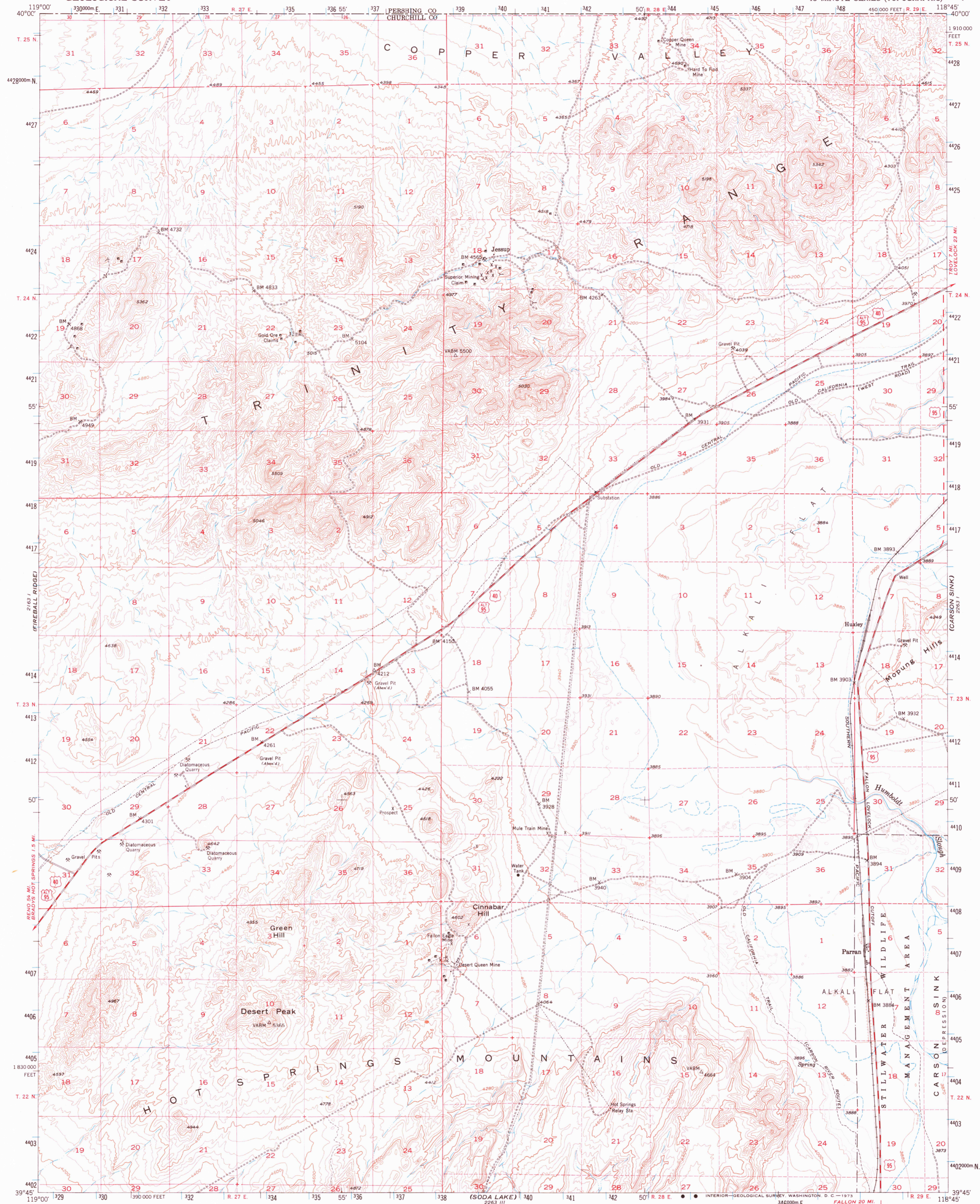
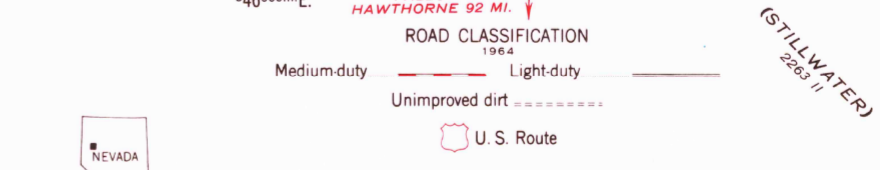
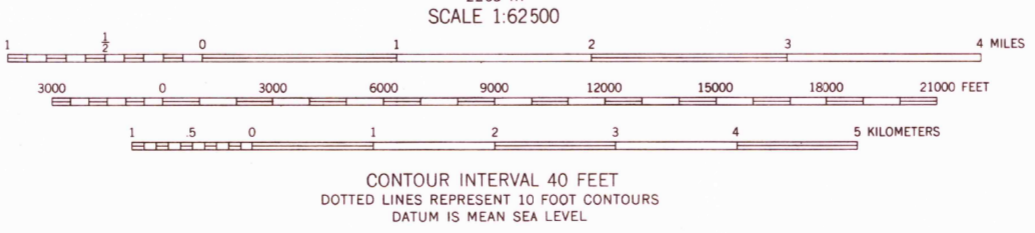
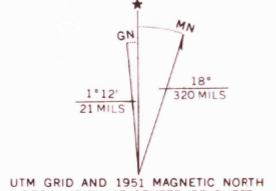


2664 ft
(TWO TILES)
(TWO TILES)



Mapped, edited, and published by the Geological Survey
Control by USGS and USC&GS
Topography from aerial photographs by multiplex methods
and by plane-table surveys 1951. Aerial photographs taken 1948
Polyconic projection. 1927 North American datum
10,000-foot grid based on Nevada coordinate system, west zone
Dashed land lines indicate approximate locations
Unchecked elevations are shown in brown
1000-meter Universal Transverse Mercator grid ticks,
zone 11, shown in blue.



THIS MAP COMPLIES WITH NATIONAL MAP ACCURACY STANDARDS
FOR SALE BY U. S. GEOLOGICAL SURVEY, DENVER, COLORADO 80225 OR WASHINGTON, D. C. 20242
A FOLDER DESCRIBING TOPOGRAPHIC MAPS AND SYMBOLS IS AVAILABLE ON REQUEST

DESERT PEAK, NEV.
N3945-W11845/15
1951
AMS 2263 IV-SERIES V796

2664 ft
(TWO TILES)
(TWO TILES)