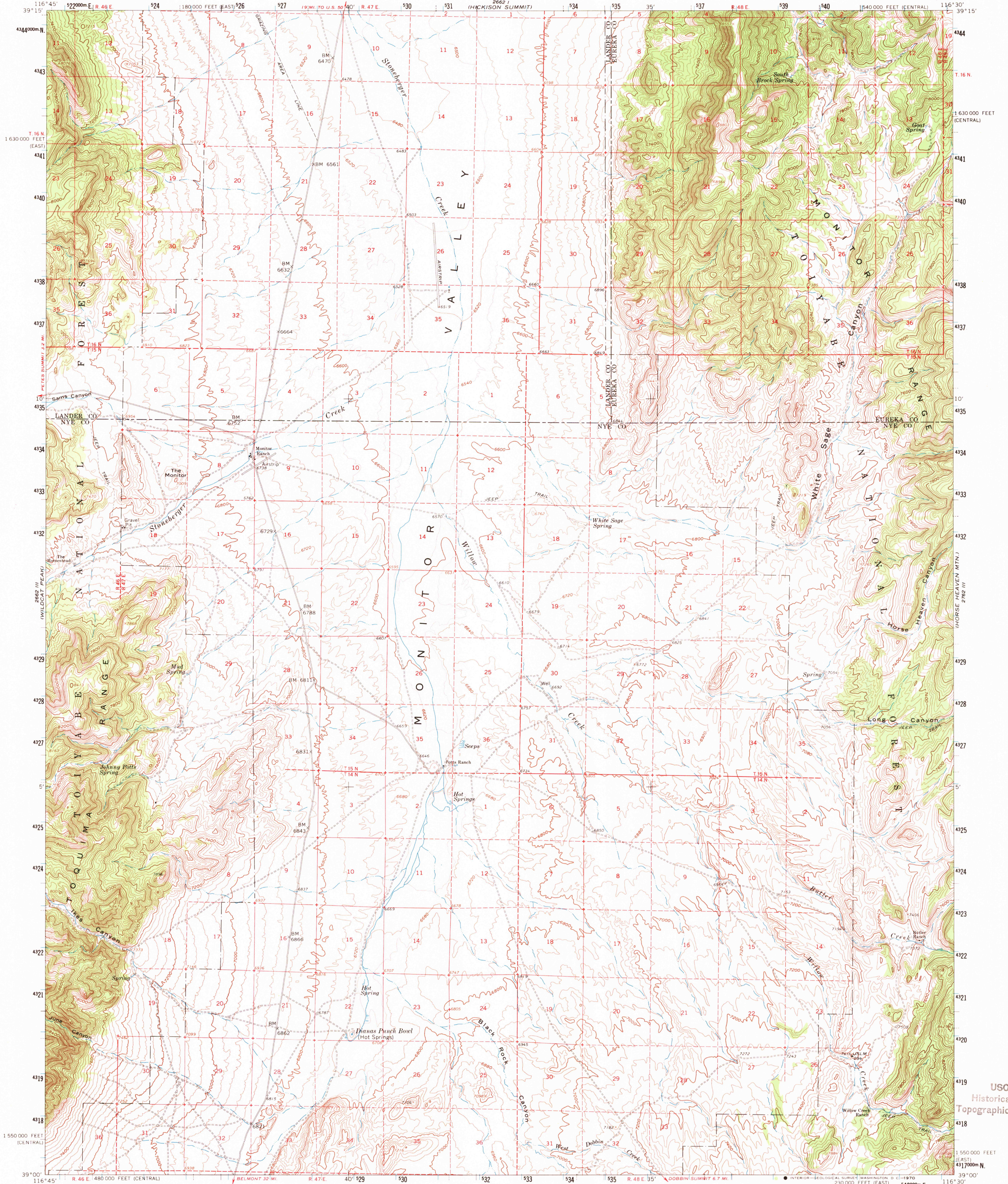


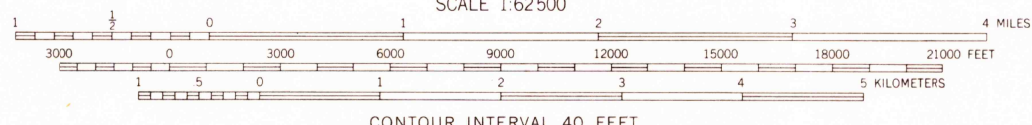
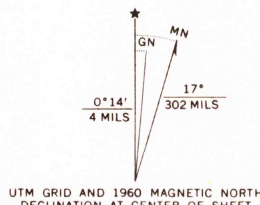
UNITED STATES  
DEPARTMENT OF THE INTERIOR  
GEOLOGICAL SURVEY

DIANAS PUNCH BOWL QUADRANGLE  
NEVADA  
15 MINUTE SERIES (TOPOGRAPHIC)



Mapped, edited, and published by the Geological Survey

Control by USGS and USC&GS  
Topography from aerial photographs by photogrammetric methods and by planetable surveys 1960. Aerial photographs taken 1956  
Polyconic projection. 1927 North American datum 10,000-foot grids based on Nevada coordinate system, central and east zones  
1000-meter Universal Transverse Mercator grid ticks, zone 11, shown in blue  
Dashed land lines indicate approximate locations  
Where omitted, land lines have not been established



ROAD CLASSIFICATION  
Light-duty ————— Unimproved dirt —————

THIS MAP COMPLIES WITH NATIONAL MAP ACCURACY STANDARDS  
FOR SALE BY U. S. GEOLOGICAL SURVEY, DENVER, COLORADO 80225 OR WASHINGTON, D. C. 20242  
A FOLDER DESCRIBING TOPOGRAPHIC MAPS AND SYMBOLS IS AVAILABLE ON REQUEST

U.S.G.S.  
FILE COPY  
TOPOGRAPHIC DIVISION

DIANAS PUNCH BOWL, NEV.  
N 3900—W 11630/15

1960  
AMS 2662 II—SERIES V796

3310

APR 28 1970