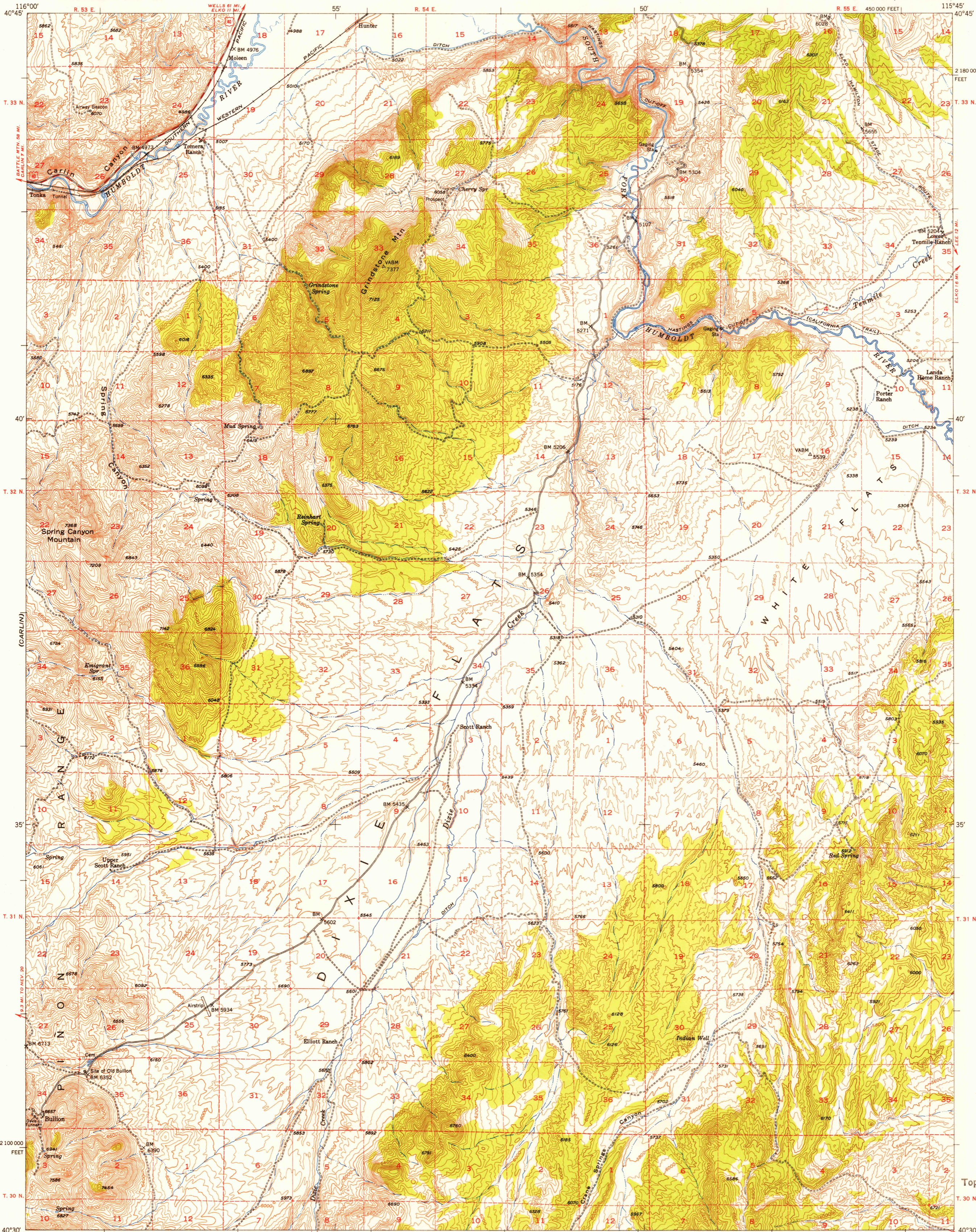
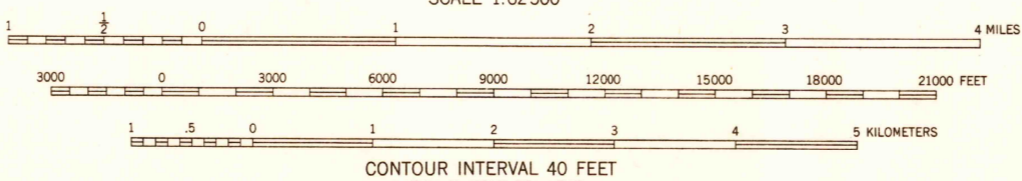
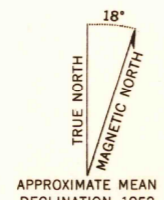


FILE COPY  
Inspection and Editing



Maped, edited, and published by the Geological Survey  
Control by USGS and USC&GS  
Topography from aerial photographs by multiplex methods  
Aerial photographs taken 1950. Field check 1952  
Polyconic projection. 1927 North American datum  
10,000-foot grid based on Nevada coordinate system, east zone  
Dashed land lines indicate approximate locations



ROAD CLASSIFICATION

Heavy-duty	4 LANE & 6 LANE	Light-duty
Medium-duty	2 LANE & 4 LANE	Unimproved dirt

• U.S. Route    ○ State Route



THIS MAP COMPLIES WITH NATIONAL MAP ACCURACY STANDARDS  
FOR SALE BY U. S. GEOLOGICAL SURVEY, FEDERAL CENTER, DENVER, COLORADO OR WASHINGTON 25, D. C.  
A FOLDER DESCRIBING TOPOGRAPHIC MAPS AND SYMBOLS IS AVAILABLE ON REQUEST

FILE COPY  
Inspection and Editing

DIXIE FLATS, NEV.  
N4030-W11545/15

1952    MAR 22 1954

USGS  
Historical File  
Topographic Division

2660