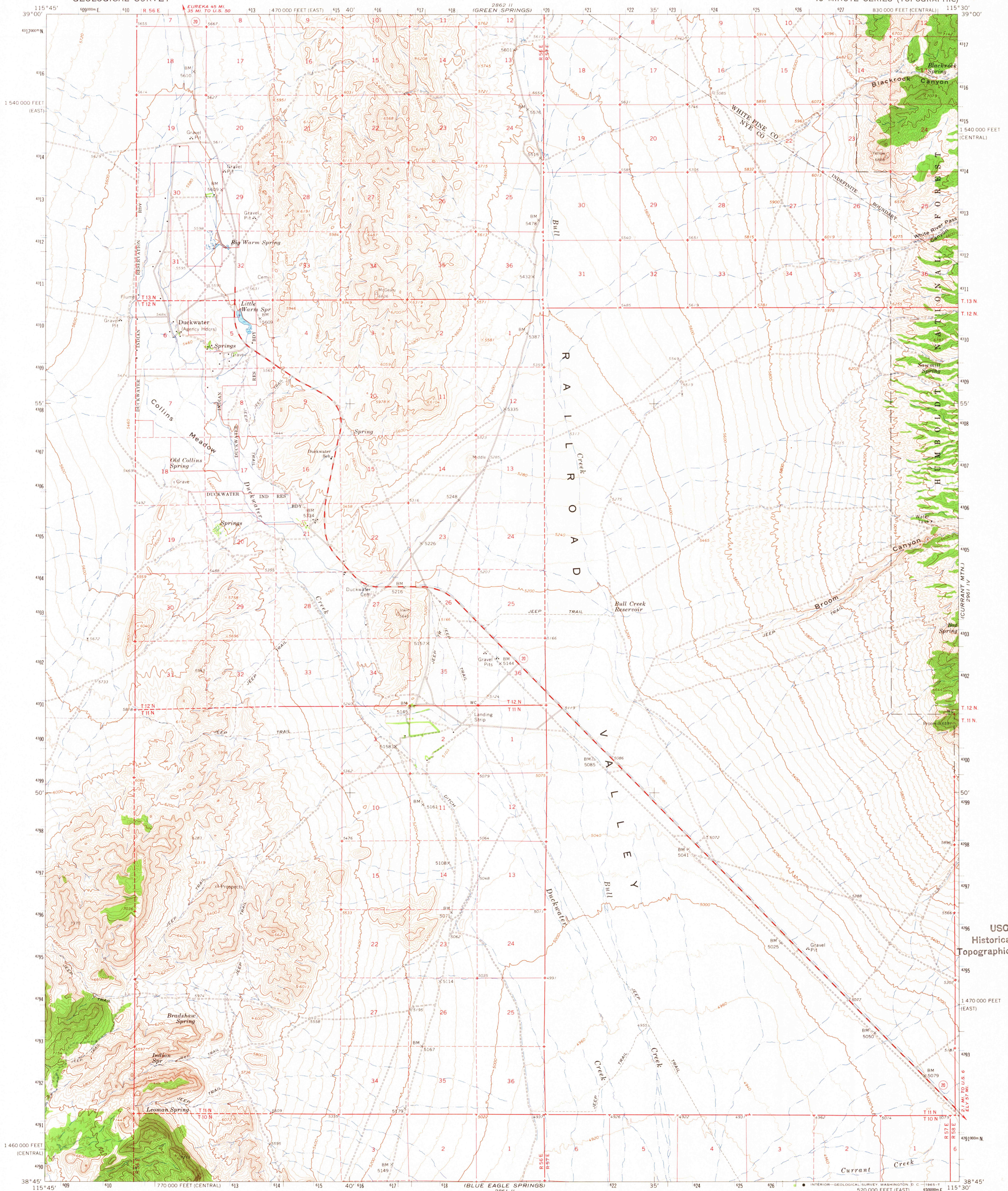
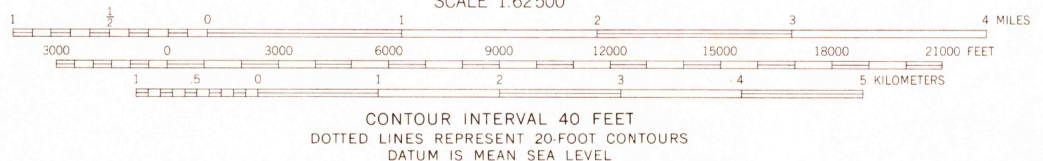
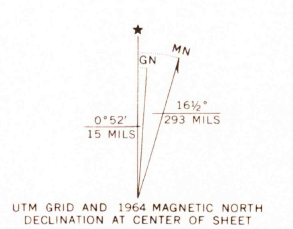


UNITED STATES
DEPARTMENT OF THE INTERIOR
GEOLOGICAL SURVEY

DUCKWATER QUADRANGLE
NEVADA
15 MINUTE SERIES (TOPOGRAPHIC)



Mapped, edited, and published by the Geological Survey
Control by USGS and USC&GS
Topography by photogrammetric methods from aerial photographs taken 1962. Field checked 1964
Polyconic projection. 1927 North American datum
10,000-foot grids based on Nevada coordinate system, central and east zones
1000-meter Universal Transverse Mercator grid ticks, zone 11, shown in blue
Where omitted, land lines have not been established



ROAD CLASSIFICATION
Medium duty — Light duty
Unimproved dirt

U.S.G.S. FILE COPY TOPOGRAPHIC DIVISION
NEVADA
QUADRANGLE LOCATION

DUCKWATER, NEV.
N3845—W11530/15
1964
AMS 2861 I—SERIES V796

THIS MAP COMPLIES WITH NATIONAL MAP ACCURACY STANDARDS
FOR SALE BY U.S. GEOLOGICAL SURVEY, DENVER, COLORADO 80225, OR WASHINGTON, D. C. 20242
A FOLDER DESCRIBING TOPOGRAPHIC MAPS AND SYMBOLS IS AVAILABLE ON REQUEST

USGS
Historical File
Topographic Division

AUG 26 1965
2000