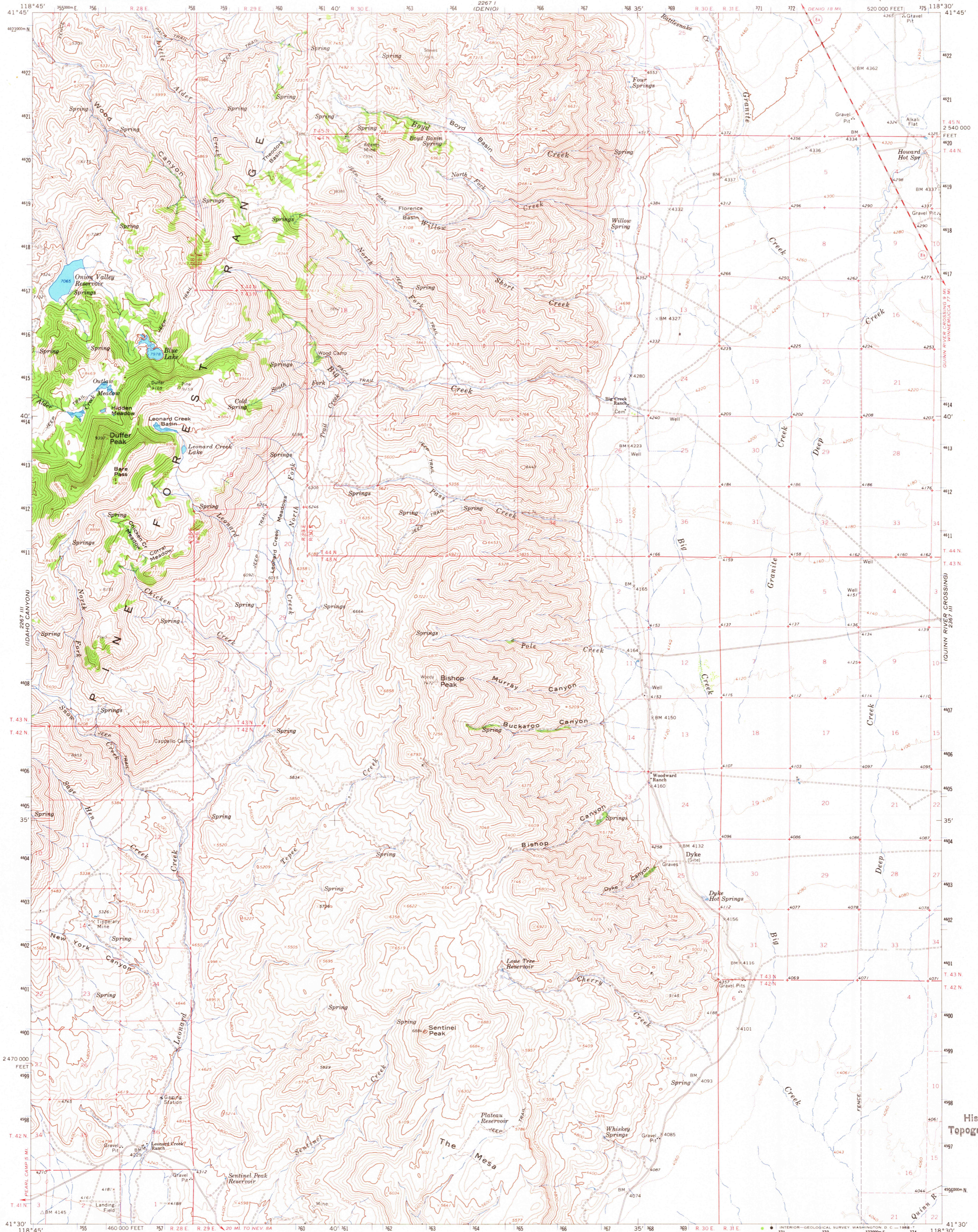
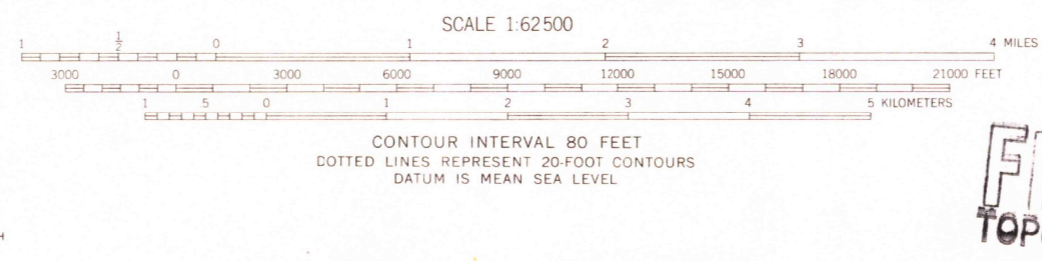
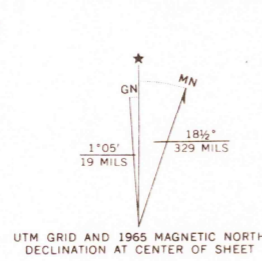


UNITED STATES
DEPARTMENT OF THE INTERIOR
GEOLOGICAL SURVEY

DUFFER PEAK QUADRANGLE
NEVADA—HUMBOLDT CO.
15 MINUTE SERIES (TOPOGRAPHIC)



Mapped, edited, and published by the Geological Survey
Control by USGS and USC&GS
Topography by photogrammetric methods from aerial
photographs taken 1963. Field checked 1965
Polyconic projection. 1927 North American datum
10,000-foot grid based on Nevada coordinate system, west zone
1:000-meter Universal Transverse Mercator grid ticks,
zone 11, shown in blue
Where omitted, land lines have not been established
or are not shown because of insufficient data



U.S.G.S. FILE COPY TOPOGRAPHIC DIVISION

ROAD CLASSIFICATION
Medium-duty — Light-duty
Unimproved dirt — State Route

DUFFER PEAK, NEV.
N4130—W11830/15
1965
AMS 2267 II—SERIES V796

USGS
Historical File
Topographic Division

3450
JAN 12 1969