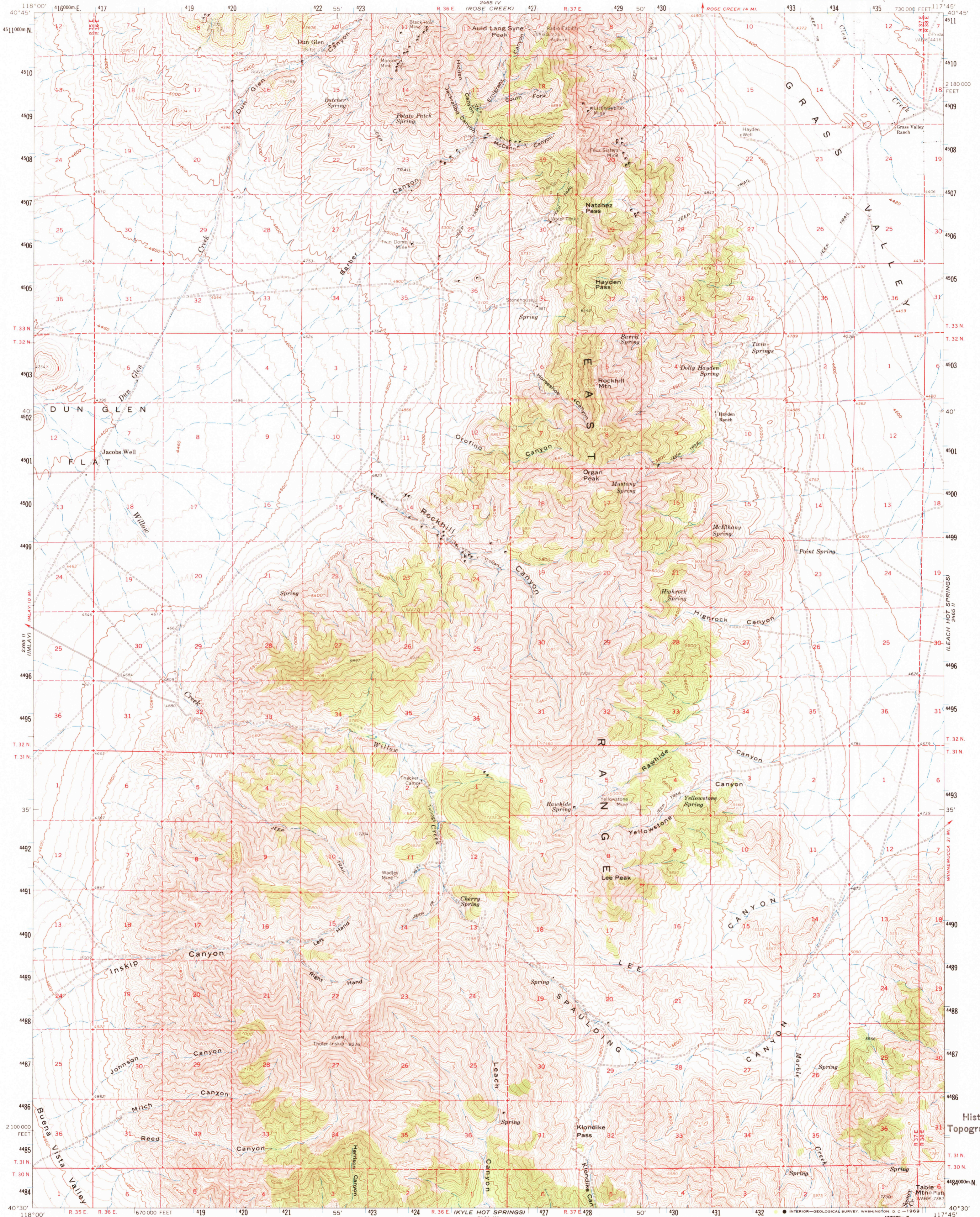
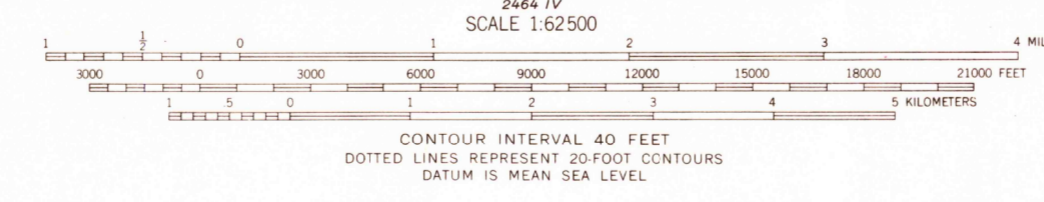
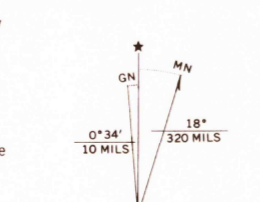


UNITED STATES  
DEPARTMENT OF THE INTERIOR  
GEOLOGICAL SURVEY

DUN GLEN QUADRANGLE  
NEVADA-PERSHING CO.  
15 MINUTE SERIES (TOPOGRAPHIC)



Mapped, edited and published by the Geological Survey  
Control by USGS and USC&GS  
Topography by photogrammetric methods from aerial  
photographs taken 1957 and planimetric surveys 1961  
Polyconic projection - 1927 North American datum  
10,000-foot grid based on Nevada coordinate system, west zone  
1000-meter Universal Transverse Mercator grid ticks,  
zone 11, shown in blue



USGS  
Historical File  
Topographic Division  
NEVADA  
U.S.G.S.  
FILE COPY  
TOPOGRAPHIC DIVISION  
ROAD CLASSIFICATION  
Right-duty  
Improved dirt  
DUN GLEN, NEV.  
N4030-W11745/15  
1961  
AMS 2465 III-SERIES V796

3220  
JUL 22 1969

THIS MAP COMPLIES WITH NATIONAL MAP ACCURACY STANDARDS  
FOR SALE BY U. S. GEOLOGICAL SURVEY, DENVER, COLORADO 80225 OR WASHINGTON, D. C. 20242  
A FOLDER DESCRIBING TOPOGRAPHIC MAPS AND SYMBOLS IS AVAILABLE ON REQUEST