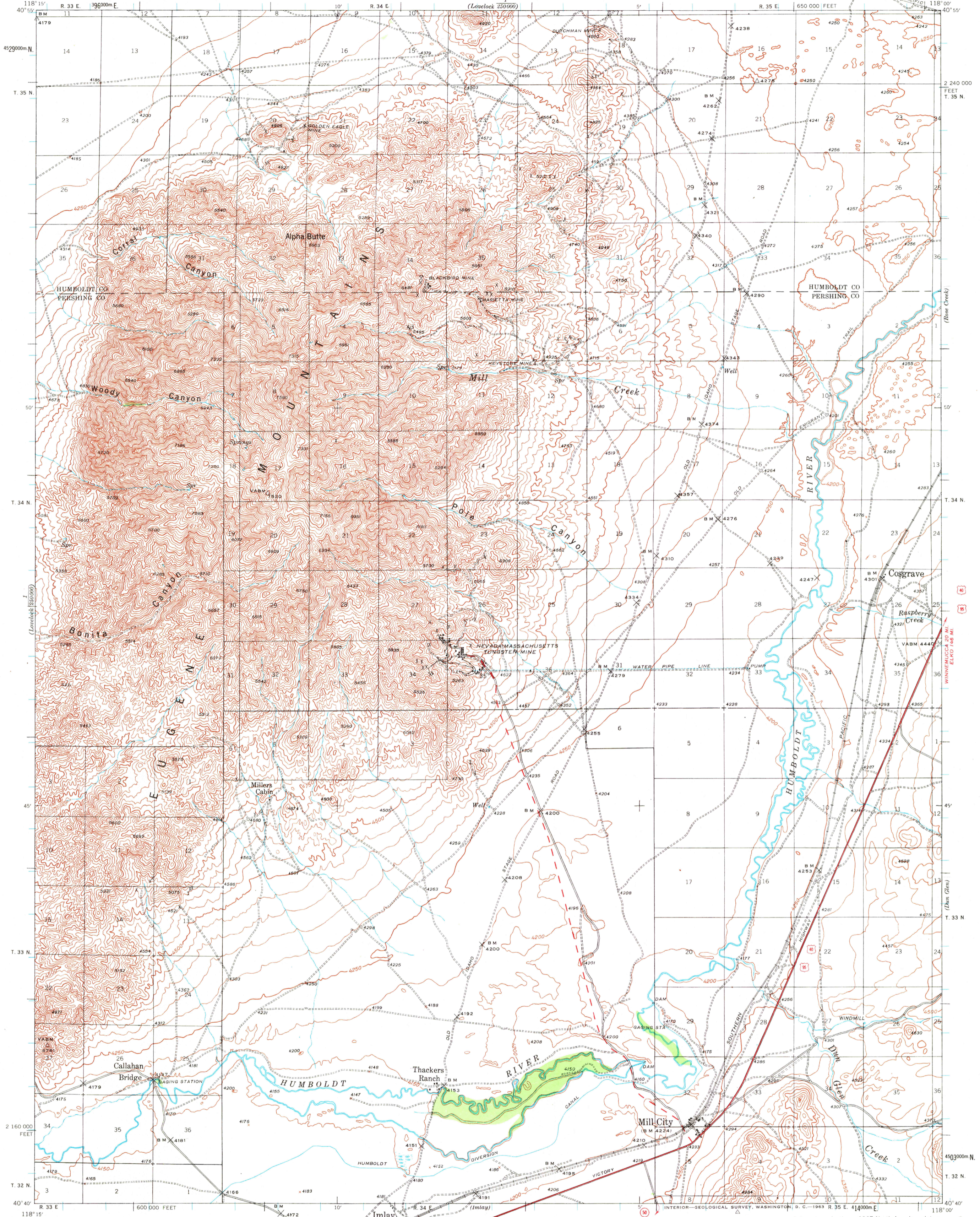


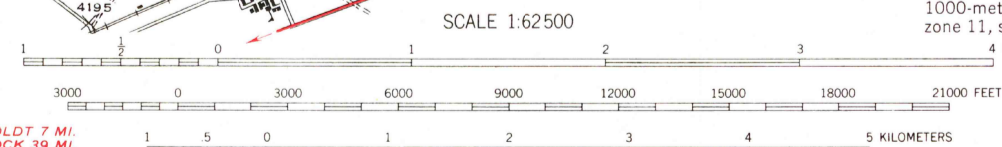
UNITED STATES
DEPARTMENT OF THE INTERIOR
GEOLOGICAL SURVEY

NEVADA
EUGENE MOUNTAINS AREA
15-MINUTE SERIES



Topography by R. W. Burchard
and George K. Jensen
Surveyed in 1939

APPROXIMATE MEAN
DECLINATION, 1939



ROAD CLASSIFICATION
Heavy-duty ——— Light-duty ———
Medium-duty ——— Unimproved dirt ———
U.S. Route □ State Route ○

CONTOUR INTERVAL 50 FEET
DATUM IS MEAN SEA LEVEL

FOR SALE BY U. S. GEOLOGICAL SURVEY, DENVER 25, COLORADO OR WASHINGTON 25, D. C.
A FOLDER DESCRIBING TOPOGRAPHIC MAPS AND SYMBOLS IS AVAILABLE ON REQUEST

1000-meter Universal Transverse Mercator grid ticks,
zone 11, shown in blue
4 MILES

Interior-Geological Survey, Washington, D. C.—1963 R. 85 E. 414000m E
OREANA (JUNC. U.S. 40 & 95) 43 MI.

Land lines pertaining to parts of T. 34 N., R. 33 E.,
T. 32 N., R. 34 E., and T. 33 N., R. 34 E.
are omitted because land plats and topography
cannot be reconciled.

EUGENE MOUNTAINS AREA, NEV.
N4040-W11800/15
1939

USGS
Historical File
Topographic Division

DEC 22 1980

1000