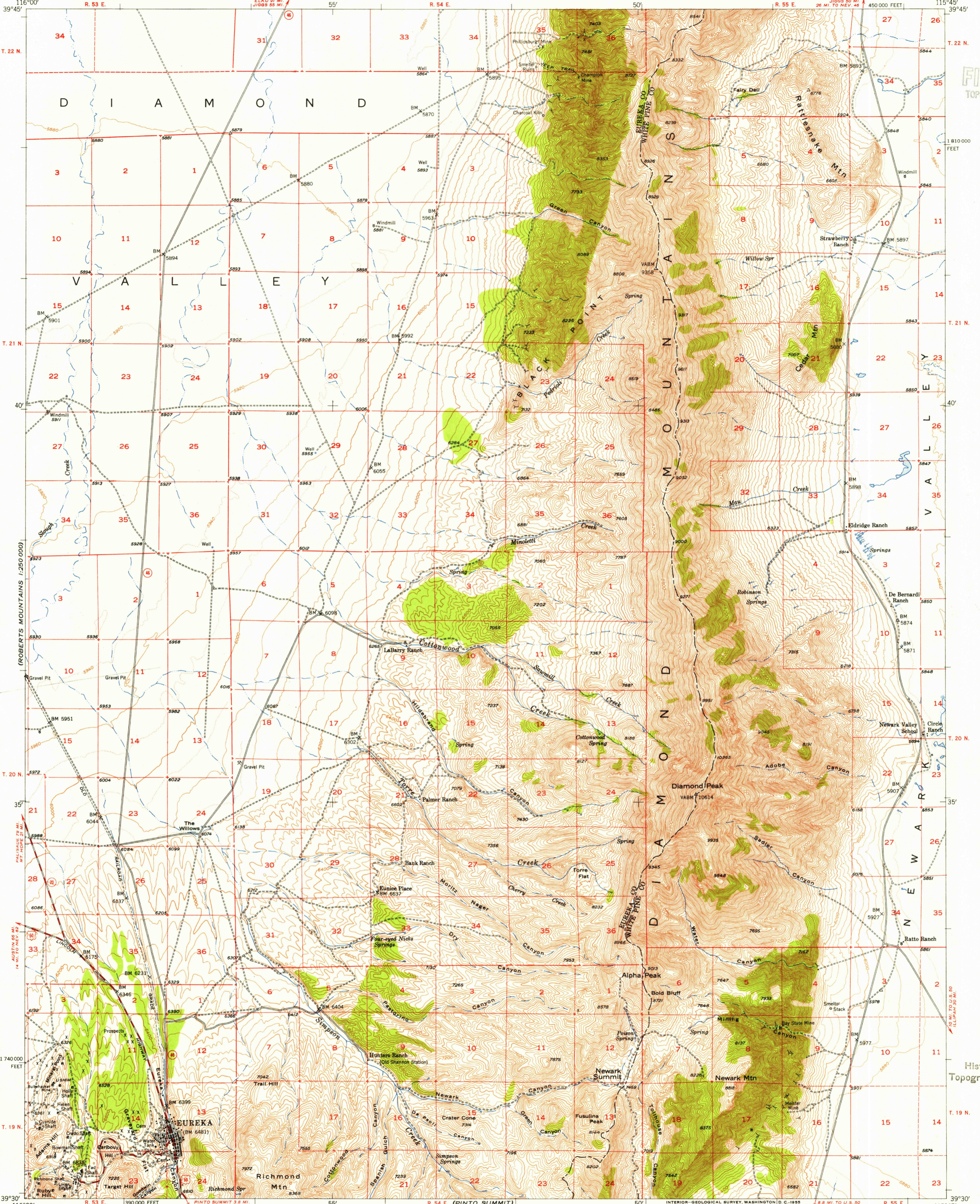
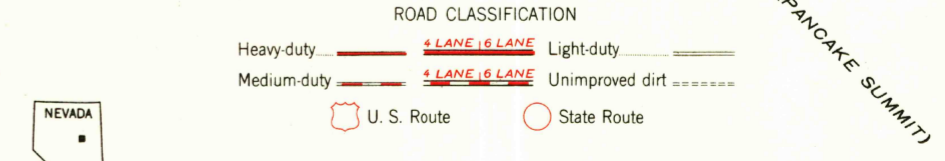
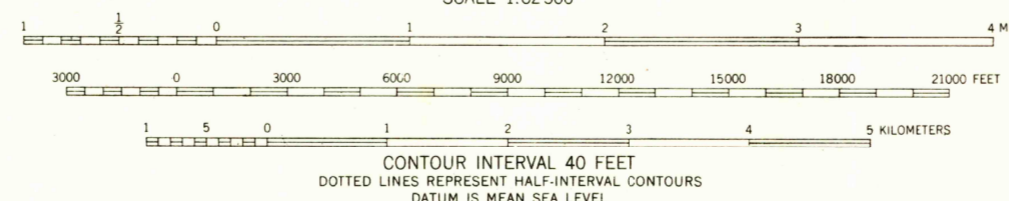
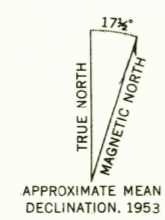


U.S.G.S.
FILE COPY
TOPOGRAPHIC DIVISION



Maped, edited, and published by the Geological Survey
Control by USGS and USC&GS
Topography from aerial photographs by multiplex methods
and by plane-table surveys 1953. Aerial photographs taken 1950
Polyconic projection. 1927 North American datum
10,000-foot grid based on Nevada coordinate system, east zone
Dashed land lines indicate approximate locations



U.S.G.S.
FILE COPY
TOPOGRAPHIC DIVISION

EUREKA, NEV.
N3930-W11545/15
1953

THIS MAP COMPLIES WITH NATIONAL MAP ACCURACY STANDARDS
FOR SALE BY U. S. GEOLOGICAL SURVEY, FEDERAL CENTER, DENVER, COLORADO 80225, D. C.
A FOLDER DESCRIBING TOPOGRAPHIC MAPS AND SYMBOLS IS AVAILABLE ON REQUEST

MAY 5 1955