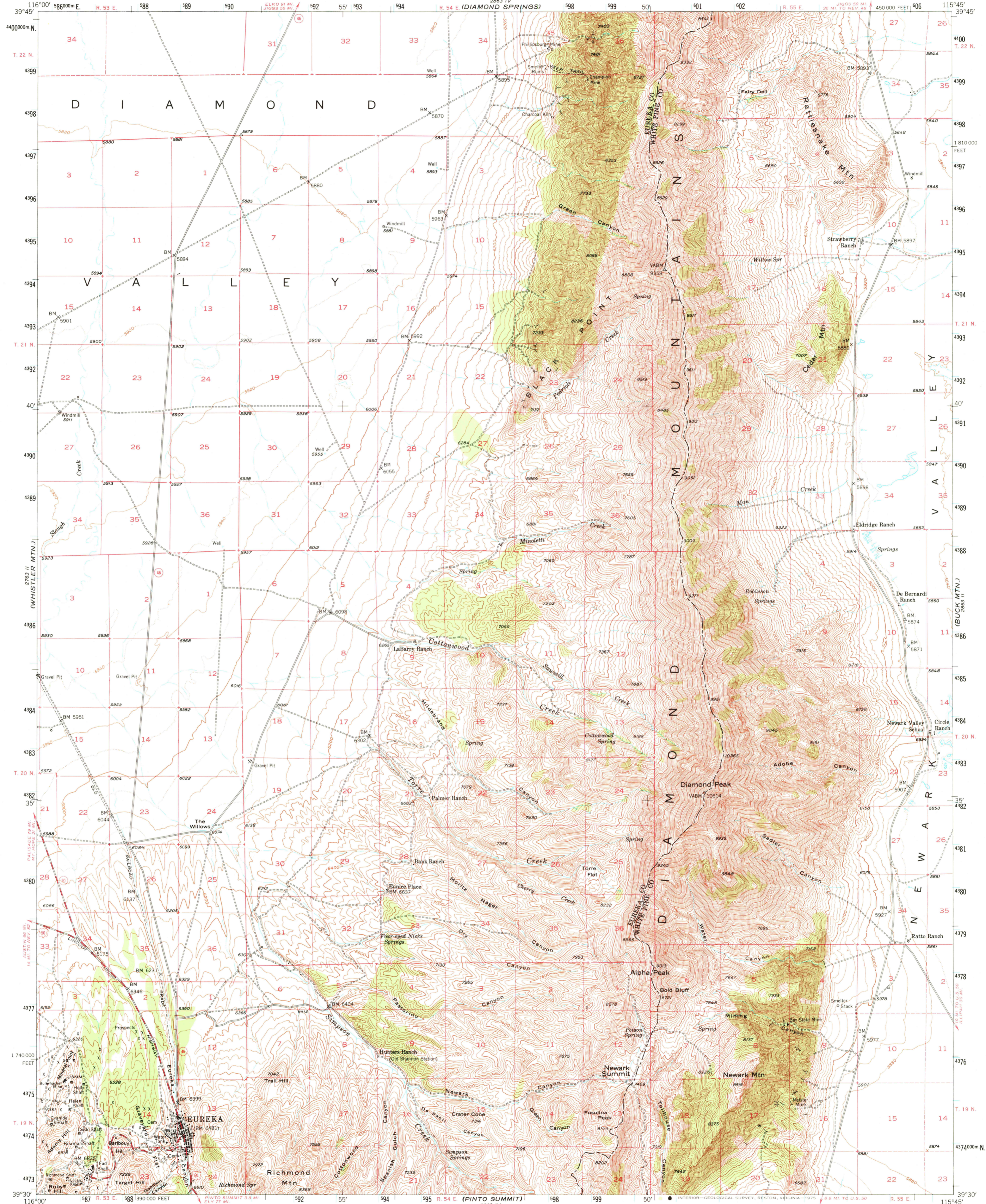
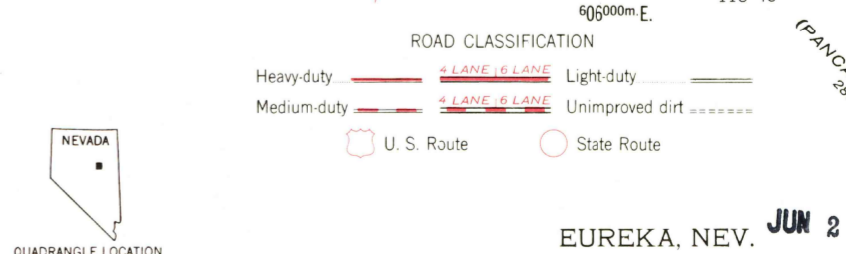
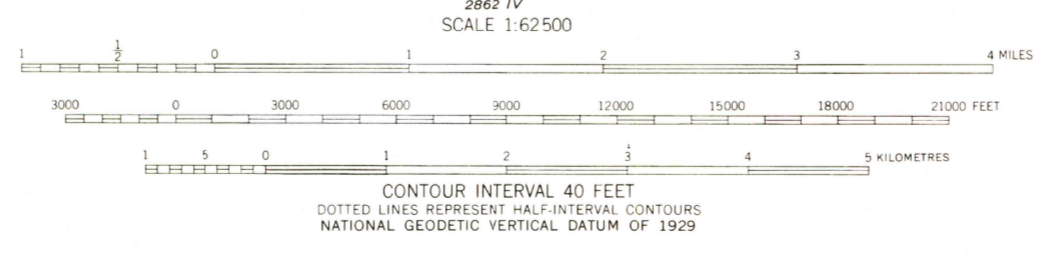
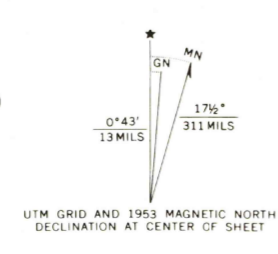


UNITED STATES
DEPARTMENT OF THE INTERIOR
GEOLOGICAL SURVEY

EUREKA QUADRANGLE
NEVADA
15 MINUTE SERIES (TOPOGRAPHIC)



Mapped, edited, and published by the Geological Survey
Control by USGS and USC&GS
Topography from aerial photographs by multiplex methods
and by plane-table surveys 1953. Aerial photographs taken 1950
Polyconic projection. 1927 North American datum
10,000-foot grid based on Nevada coordinate system, east zone
Dashed land lines indicate approximate locations
1000-metre Universal Transverse Mercator grid ticks,
zone 11, shown in blue



EUREKA, NEV. JUN 20 1975
N 3930-W 11545/15

1953
AMS 2863 III-SERIES V796

USGS
HISTORICAL FILE
TOPOGRAPHIC DIVISION

THIS MAP COMPLIES WITH NATIONAL MAP ACCURACY STANDARDS
FOR SALE BY U. S. GEOLOGICAL SURVEY, DENVER, COLORADO 80225, OR RESTON, VIRGINIA 22092
A FOLDER DESCRIBING TOPOGRAPHIC MAPS AND SYMBOLS IS AVAILABLE ON REQUEST