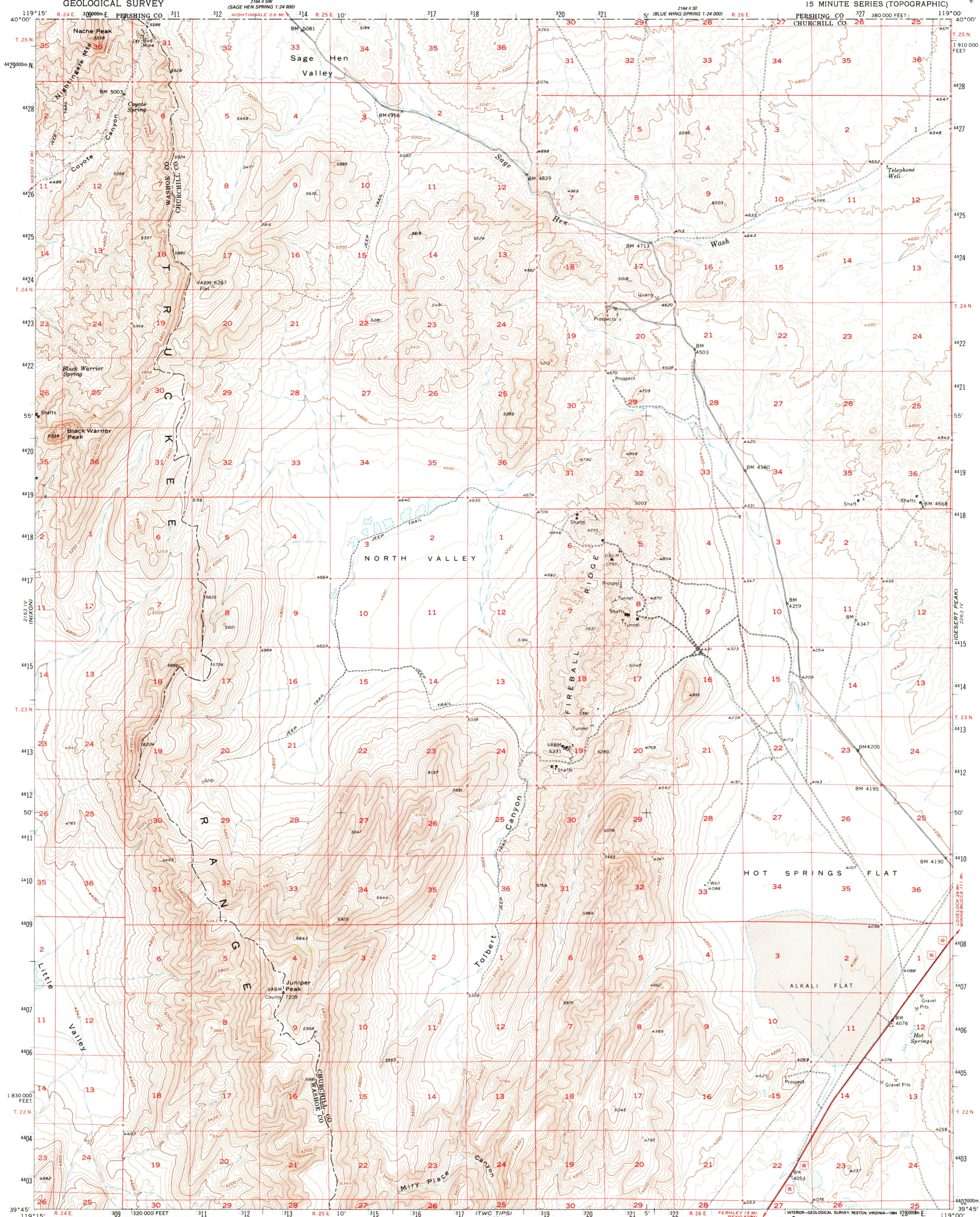
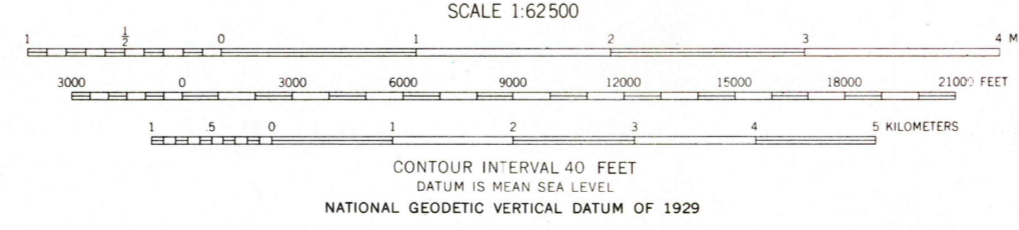
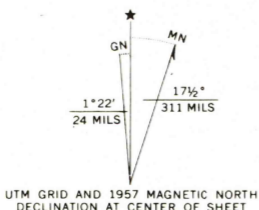


UNITED STATES  
DEPARTMENT OF THE INTERIOR  
GEOLOGICAL SURVEY

FIREBALL RIDGE QUADRANGLE  
NEVADA  
15 MINUTE SERIES (TOPOGRAPHIC)



Mapped, edited, and published by the Geological Survey  
Control by USGS and USC&GS  
Topography from aerial photographs by multiplex methods  
Aerial photographs taken 1954. Field check 1957  
Polyconic projection. 1927 North American datum  
10,000-foot grid based on Nevada coordinate system,  
west zone  
1000-meter Universal Transverse Mercator grid ticks,  
zone 11, shown in blue  
To place on the predicted North American Datum 1983  
move the projection lines 14 meters north and  
86 meters east



ROAD CLASSIFICATION  
Heavy-duty ——— Light-duty ———  
Unimproved dirt - - - - -  
U.S. Route

FIREBALL RIDGE, NEV.  
N 3945—W 11900/15

THIS MAP COMPLIES WITH NATIONAL MAP ACCURACY STANDARDS  
FOR SALE BY U.S. GEOLOGICAL SURVEY, DENVER, COLORADO 80225, OR RESTON, VIRGINIA 22092  
A FOLDER DESCRIBING TOPOGRAPHIC MAPS AND SYMBOLS IS AVAILABLE ON REQUEST

1957  
DMA 2163 1—SERIES V796

RETURN TO:  
USGS RMD HISTORICAL MAP ARCHIVES