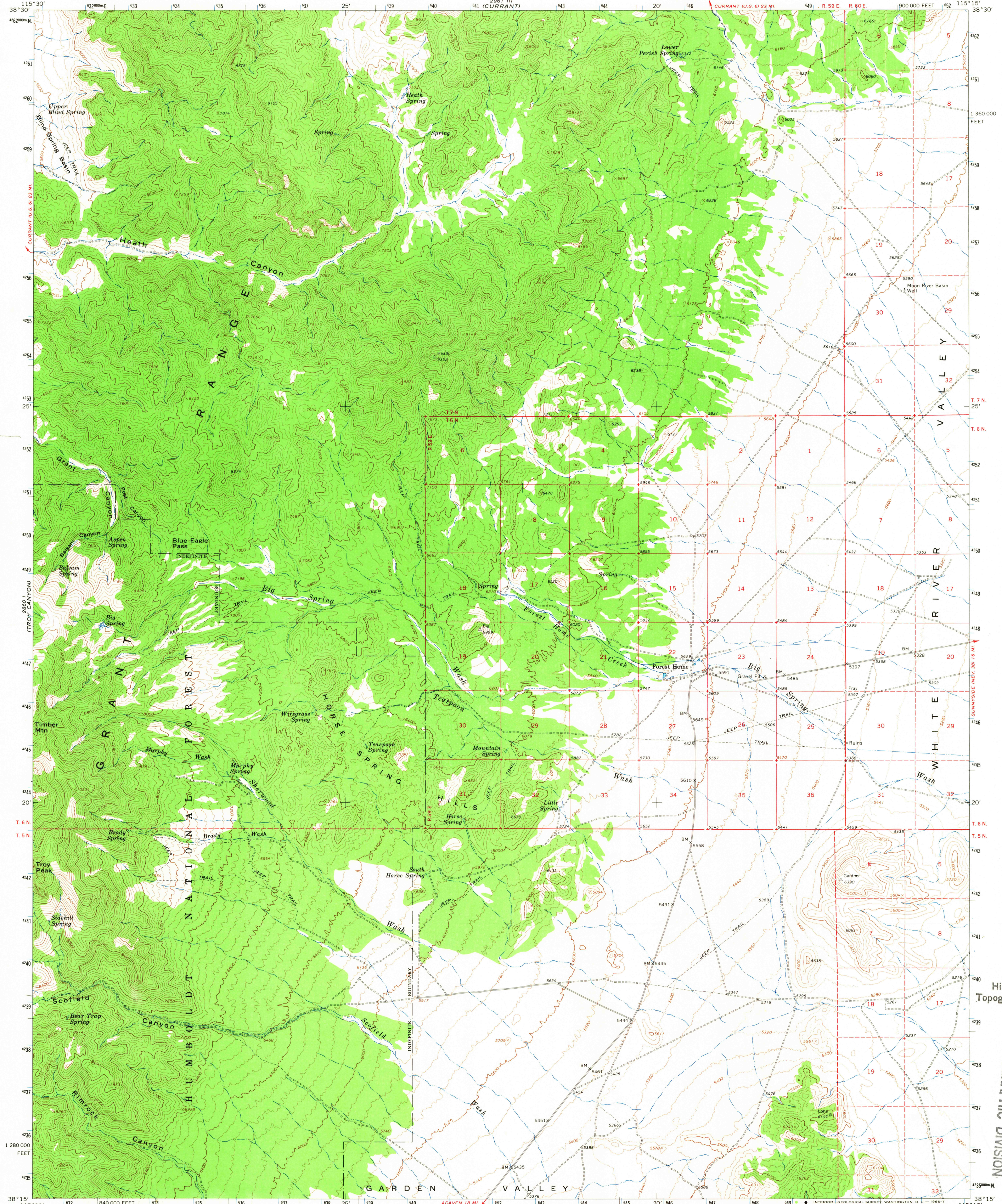


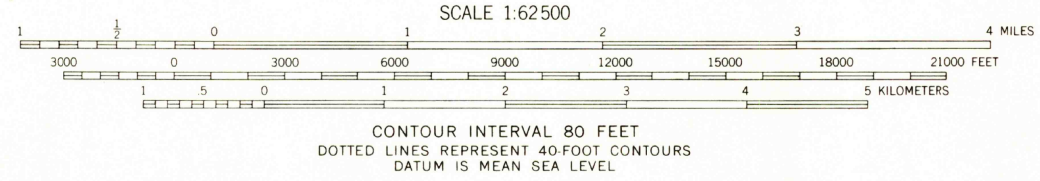
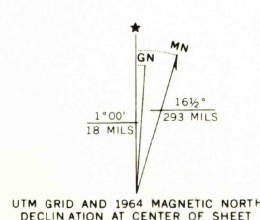
1:250,000
1:250,000
1:250,000

UNITED STATES
DEPARTMENT OF THE INTERIOR
GEOLOGICAL SURVEY

FOREST HOME QUADRANGLE
NEVADA—NYE CO.
15 MINUTE SERIES (TOPOGRAPHIC)



Mapped, edited, and published by the Geological Survey
Control by USGS, USC&GS, and State of Nevada
Topography by photogrammetric methods from aerial
photographs taken 1962. Field checked 1964
Polyconic projection. 1927 North American datum
10,000-foot grid based on Nevada coordinate system, central zone
1000-meter Universal Transverse Mercator grid ticks,
zone 11, shown in blue
Where omitted, land lines have not been established



ROAD CLASSIFICATION
Light duty ——— Unimproved dirt - - - - -

USGS
Historical File
Topographic Division

U.S.G.S.
FINE COPY
TOPOGRAPHIC DIVISION

2705

THIS MAP COMPLIES WITH NATIONAL MAP ACCURACY STANDARDS
FOR SALE BY U.S. GEOLOGICAL SURVEY, DENVER, COLORADO 80225 OR WASHINGTON, D.C. 20242
A FOLDER DESCRIBING TOPOGRAPHIC MAPS AND SYMBOLS IS AVAILABLE ON REQUEST

FOREST HOME, NEV.
N3815—W11515/15
1964
AMS 2960 IV—SERIES V796