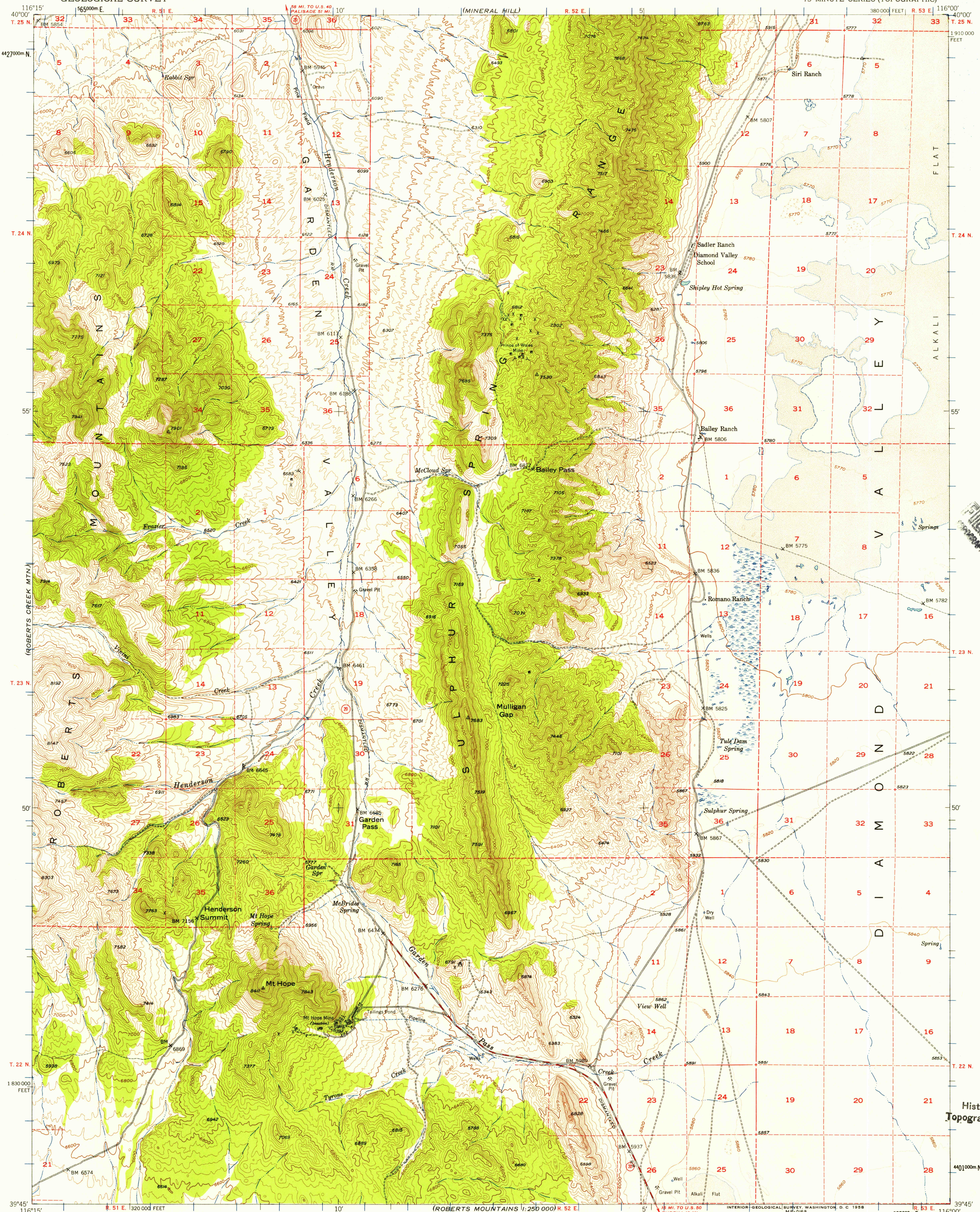


(USGS 1:250,000)



U.S.G.S.
FILE COPY
TOPOGRAPHIC DIVISION

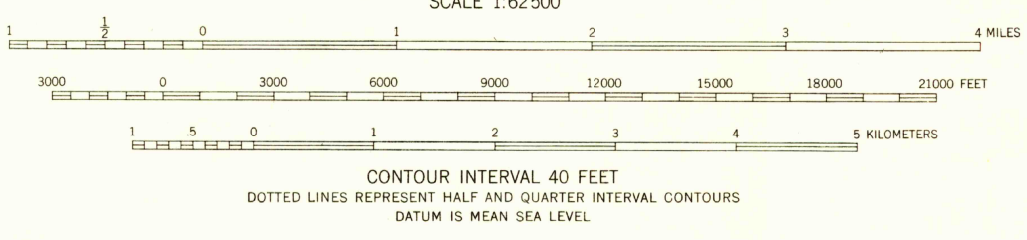
USGS
Historical File
Topographic Division

(EUREKA)

(ROBERTS MOUNTAINS)
1:250,000

Mapped, edited, and published by the Geological Survey
Control by USGS and USC&GS
Topography from aerial photographs by multiplex methods,
and by plane-table surveys 1949
Aerial photographs taken 1946
Polyconic projection. 1927 North American datum
10,000-foot grid based on Nevada coordinate system,
east zone
Dashed land lines indicate approximate location
1000-meter Universal Transverse Mercator grid ticks,
zone 11, shown in blue

APPROXIMATE MEAN
DECLINATION, 1949



ROAD CLASSIFICATION
HARD-SURFACE ALL WEATHER ROADS
Heavy-duty ——— 4 LANE 16 LANE Improved dirt
Medium-duty ——— 4 LANE 16 LANE Unimproved dirt
Loose-surface, graded, or narrow hard-surface
U. S. Route State Route

U.S.G.S.
FILE COPY
TOPOGRAPHIC DIVISION

GARDEN VALLEY, NEV.
N3945-W11600/15

1949

FOR SALE BY U. S. GEOLOGICAL SURVEY, FEDERAL CENTER, DENVER, COLORADO OR WASHINGTON 25, D. C.
A FOLDER DESCRIBING TOPOGRAPHIC MAPS AND SYMBOLS IS AVAILABLE ON REQUEST

DEC 20 1953

1900