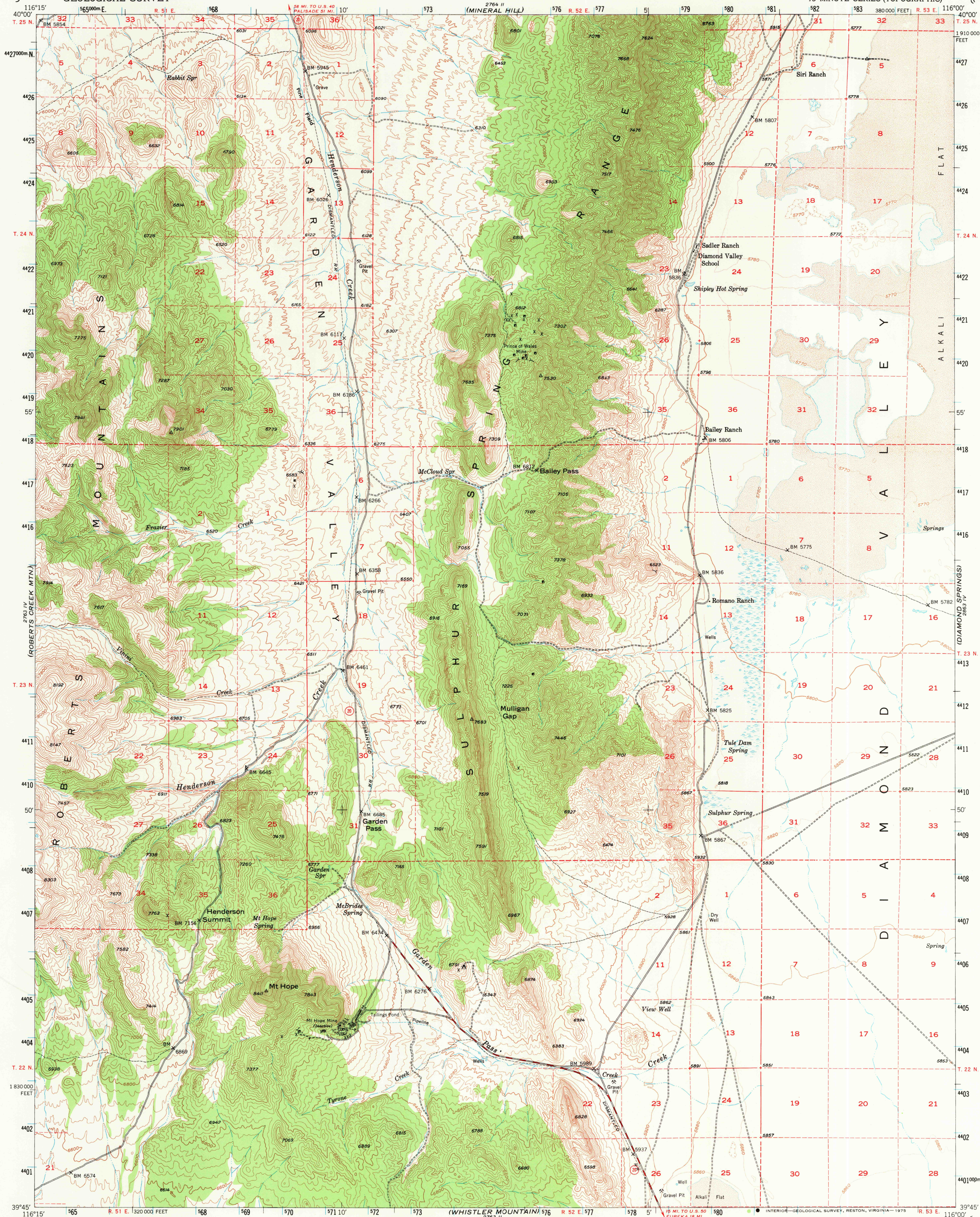


(HORSE CREEK VALLEY)

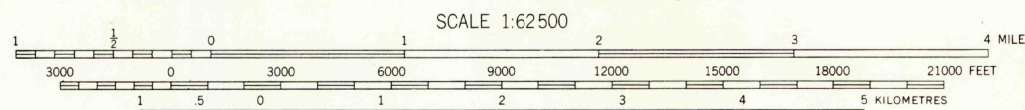
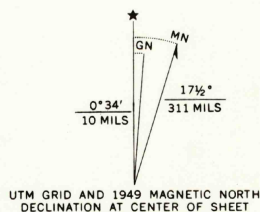
UNITED STATES
DEPARTMENT OF THE INTERIOR
GEOLOGICAL SURVEY

GARDEN VALLEY QUADRANGLE
NEVADA-EUREKA CO.
15 MINUTE SERIES (TOPOGRAPHIC)

(RAILROAD PASS)



Mapped, edited, and published by the Geological Survey
Control by USGS and USC&GS
Topography from aerial photographs by multiplex methods,
and by plane-table surveys 1949
Aerial photographs taken 1946
Polyconic projection. 1927 North American datum
10,000-foot grid based on Nevada coordinate system,
east zone
Dashed land lines indicate approximate location
1000-metre Universal Transverse Mercator grid ticks,
zone 11, shown in blue



CONTOUR INTERVAL 40 FEET
DOTTED LINES REPRESENT HALF AND QUARTER INTERVAL CONTOURS
NATIONAL GEODETIC VERTICAL DATUM OF 1929

THIS MAP COMPLIES WITH NATIONAL MAP ACCURACY STANDARDS
FOR SALE BY U.S. GEOLOGICAL SURVEY, DENVER, COLORADO 80225, OR RESTON, VIRGINIA 22092
A FOLDER DESCRIBING TOPOGRAPHIC MAPS AND SYMBOLS IS AVAILABLE ON REQUEST

ROAD CLASSIFICATION
HARD-SURFACE ALL WEATHER ROADS DRY WEATHER ROADS
Heavy-duty — 4 LANE LANE Improved dirt —
Medium-duty — 4 LANE LANE Unimproved dirt —
Loose-surface, graded, or narrow hard-surface —
U. S. Route State Route

GARDEN VALLEY, NEV.
N3945-W11600/15

USGS
HISTORICAL FILE
TOPOGRAPHIC DIVISION

1949
AMS 2763 I-SERIES V796

JUN 9 1975