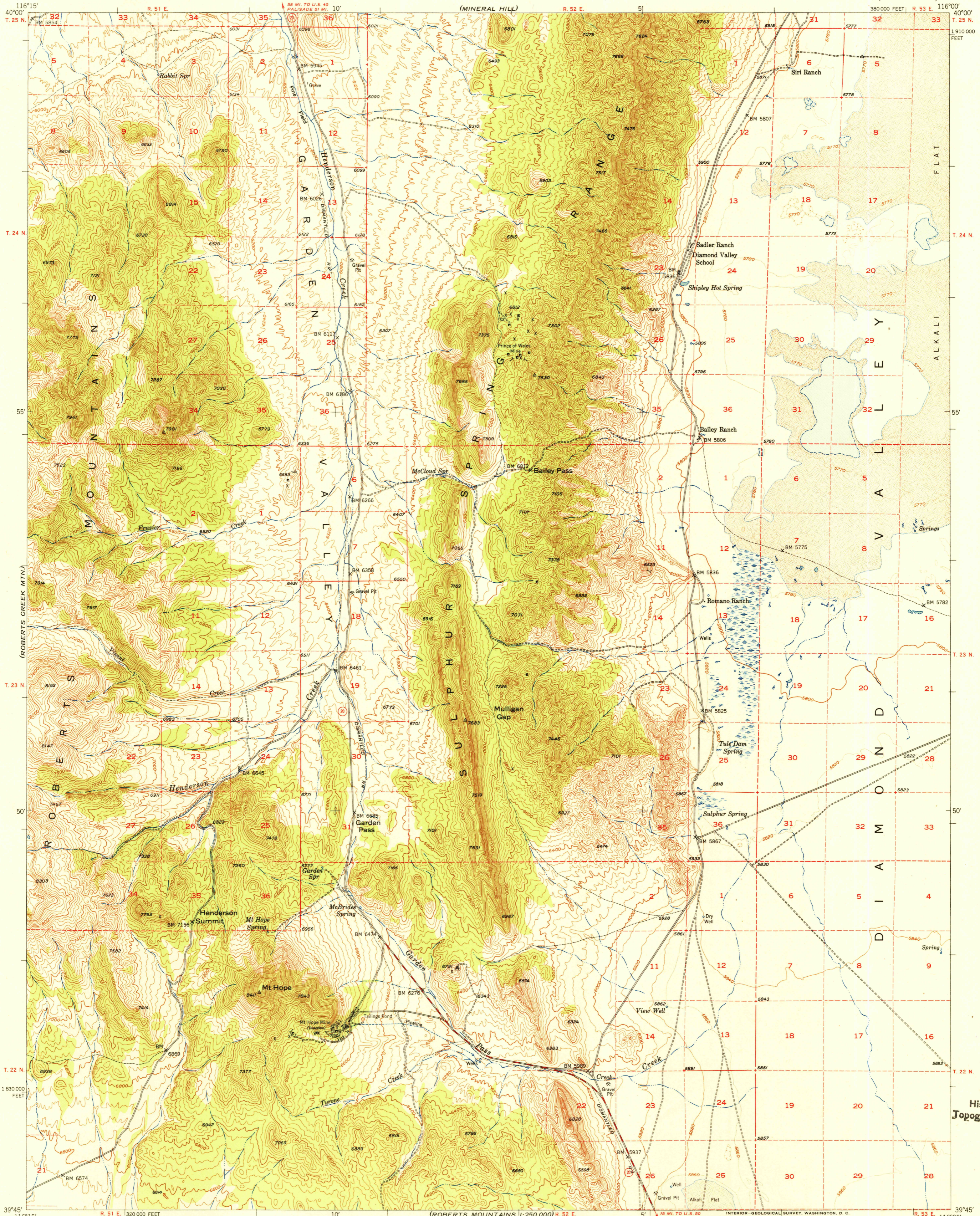
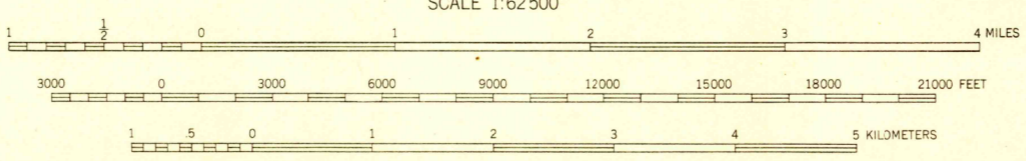
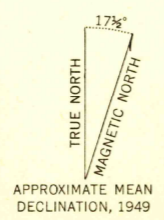


(Veget. 1:25,000)



(ROBERTS MOUNTAINS)
1:250,000

Mapped, edited, and published by the Geological Survey
Control by USGS and USC&GS
Topography from aerial photographs by multiplex methods,
and by plane-table surveys 1949
Aerial photographs taken 1946
Polyconic projection, 1927 North American datum
10,000-foot grid based on Nevada coordinate system,
east zone
Dashed land lines indicate approximate location



CONTOUR INTERVAL 40 FEET
DOTTED LINES REPRESENT HALF AND QUARTER INTERVAL CONTOURS
DATUM IS MEAN SEA LEVEL

THIS MAP COMPLIES WITH NATIONAL MAP ACCURACY STANDARDS
FOR SALE BY U. S. GEOLOGICAL SURVEY, FEDERAL CENTER, DENVER, COLORADO OR WASHINGTON 25, D. C.
A FOLDER DESCRIBING TOPOGRAPHIC MAPS AND SYMBOLS IS AVAILABLE ON REQUEST

ROAD CLASSIFICATION
HARD-SURFACE ALL WEATHER ROADS DRY WEATHER ROADS
Heavy-duty **2 LANE ROAD** Improved dirt
Medium-duty **4 LANE ROAD** Unimproved dirt
Loose-surface, graded, or narrow hard-surface
U. S. Route State Route

GARDEN VALLEY, NEV.
N3945-W11600/15
EDITION OF 1951