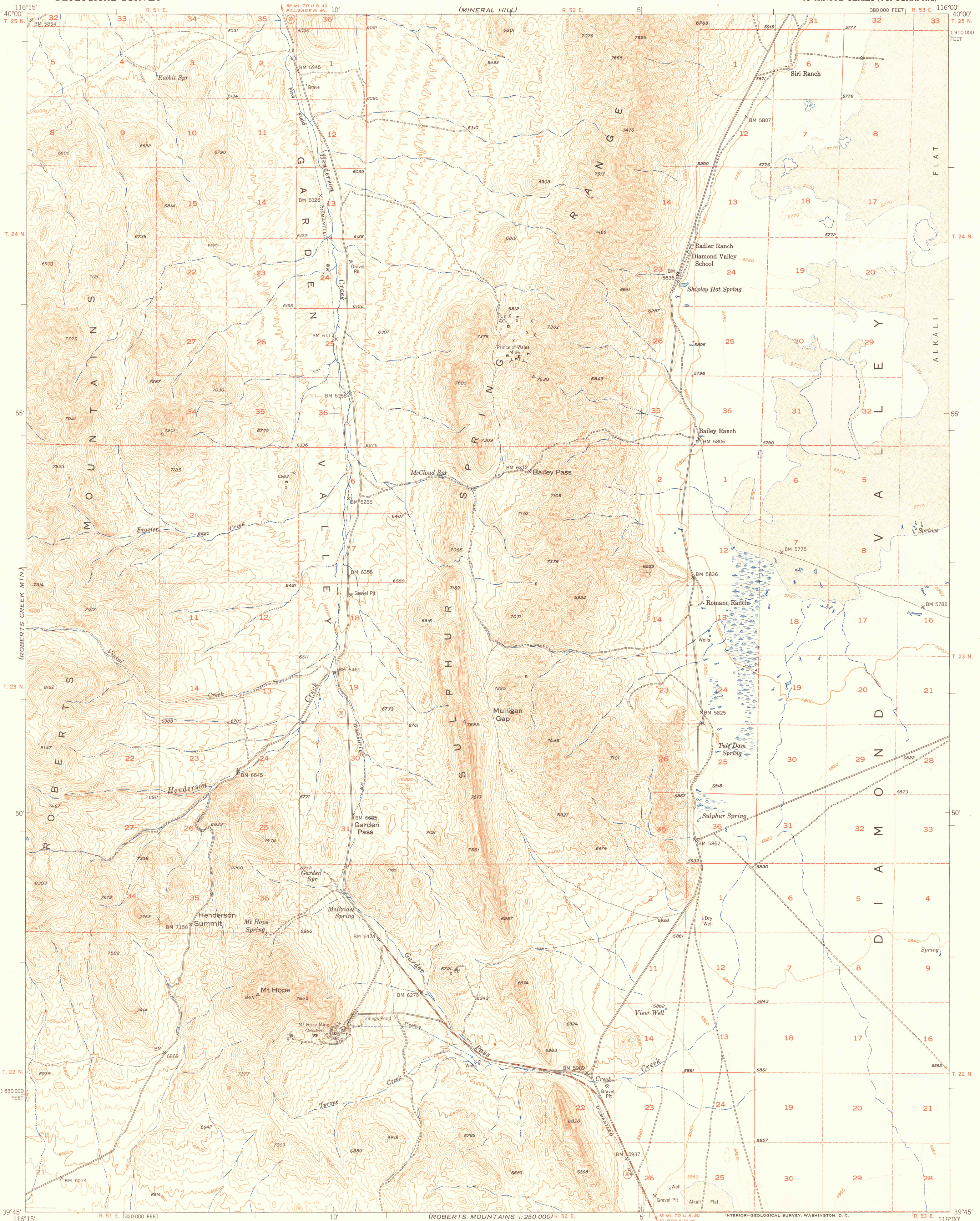
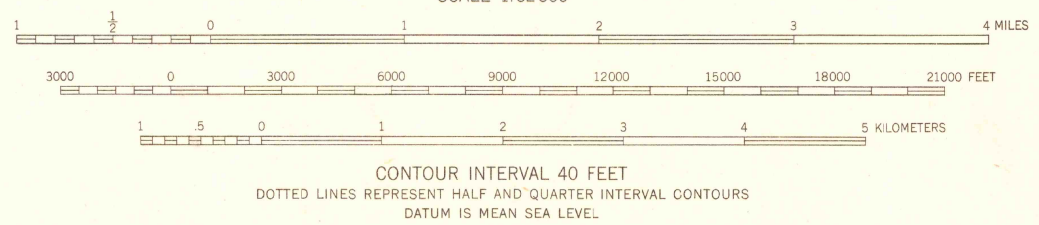


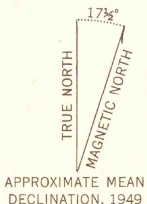
UIGS 11725 000



Mapped, edited, and published by the Geological Survey
Control by USGS and USC&GS
Topography from aerial photographs by multiplex methods,
and by plane-table surveys 1949
Aerial photographs taken 1946
Polyconic projection. 1927 North American datum
10,000-foot grid based on Nevada coordinate system,
east zone
Dashed land lines indicate approximate location



ROAD CLASSIFICATION
HARD-SURFACE ALL WEATHER ROADS DRY WEATHER ROADS
Heavy-duty Improved dirt
Medium-duty Unimproved dirt
Loose-surface, graded, or narrow hard-surface
U. S. Route State Route



THIS MAP COMPLIES WITH NATIONAL MAP ACCURACY STANDARDS
FOR SALE BY U. S. GEOLOGICAL SURVEY, FEDERAL CENTER, DENVER, COLORADO OR WASHINGTON 25, D. C.
A FOLDER DESCRIBING TOPOGRAPHIC MAPS AND SYMBOLS IS AVAILABLE ON REQUEST

GARDEN VALLEY, NEV.
N3945-W11600/15
EDITION OF 1951

BELOIT COLLEGE LIBRARIES
BELOIT, WISCONSIN

(ROBERTS MOUNTAINS)
1:250 000