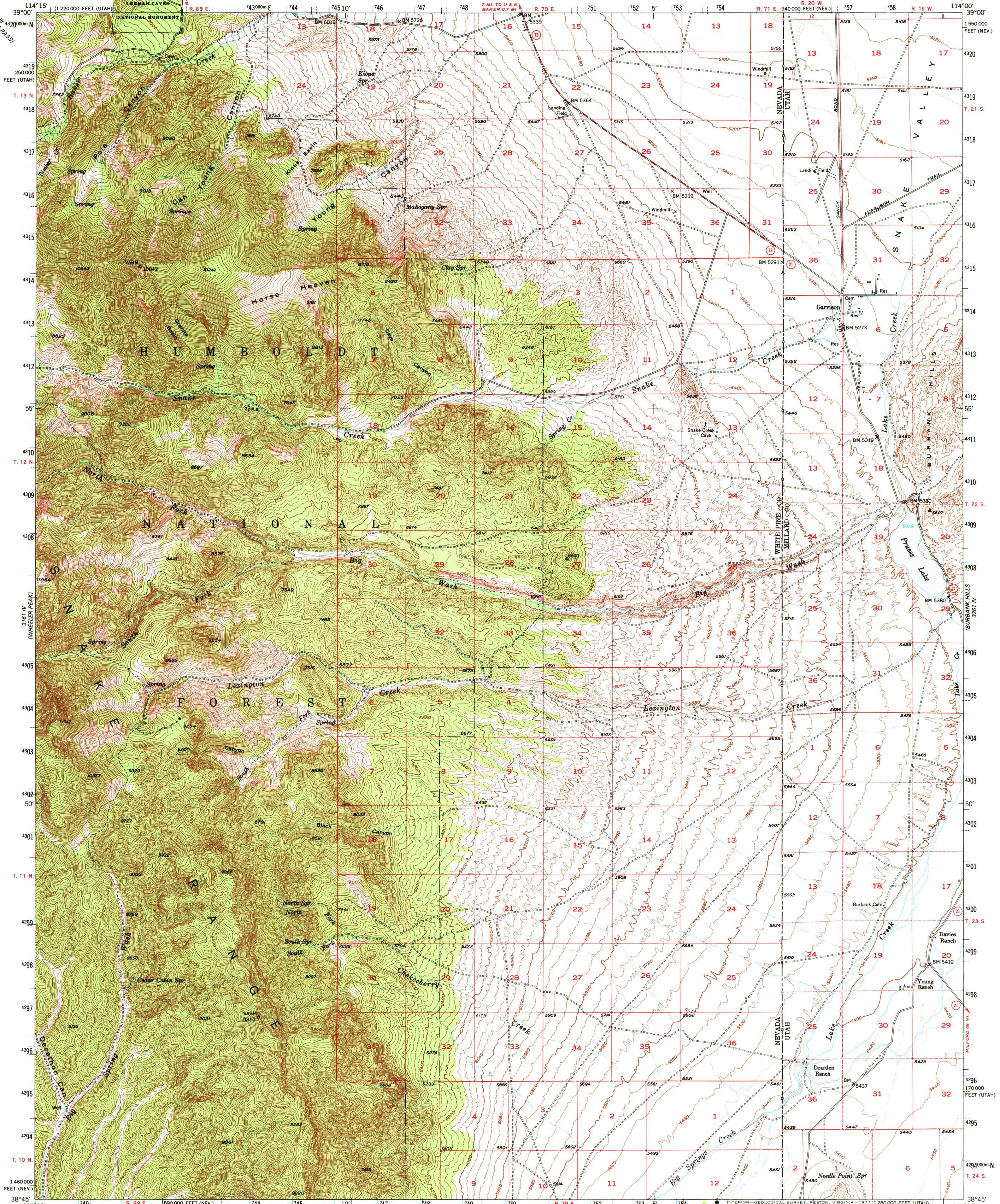
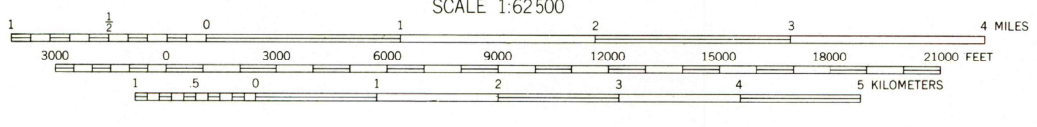
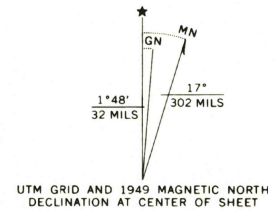


3162 II
(CONGER RANGE)



Mapped, edited, and published by the Geological Survey
Control by USGS and USC&GS
Topography from aerial photographs by multiple methods
Aerial photographs taken 1945. Field check 1949
Polyconic projection. 1927 North American datum
10,000-foot grids based on Nevada coordinate system,
east zone, and Utah coordinate system, central zone
Dashed land lines indicate approximate location
1000-meter Universal Transverse Mercator grid ticks,
zone 11, shown in blue



CONTOUR INTERVAL 40 FEET
DOTTED LINES REPRESENT HALF-INTERVAL CONTOURS
NATIONAL GEODETIC VERTICAL DATUM OF 1929

THIS MAP COMPLIES WITH NATIONAL MAP ACCURACY STANDARDS
FOR SALE BY U.S. GEOLOGICAL SURVEY, DENVER, COLORADO 80225, OR RESTON, VIRGINIA 22092
A FOLDER DESCRIBING TOPOGRAPHIC MAPS AND SYMBOLS IS AVAILABLE ON REQUEST



GARRISON, UTAH-NEV.
N3845-W11400/15
1949
AMS 3161 I-SERIES V796

USGS
Historical File
Topographic Division

OCT 21 1977

3161 III NE
(RED EDGE)
1:24,000

3161 III NW
(MORRISON GAP)
1:24,000