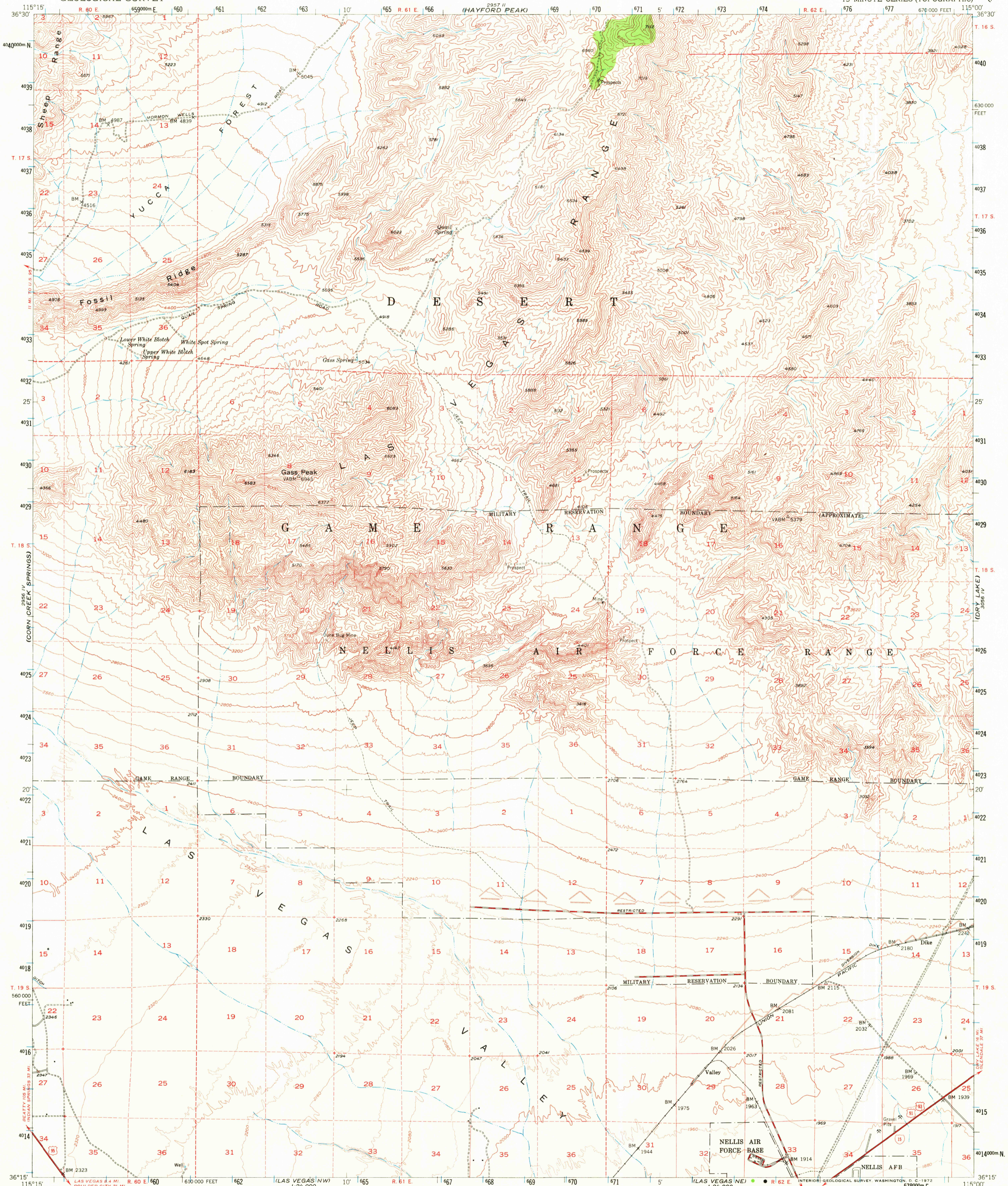


(ARROW CANYON)



Mapped, edited, and published by the Geological Survey

Control by USGS and USC&GS

Topography from aerial photographs by photogrammetric methods

Aerial photographs taken 1950. Field check 1952

Polycyclic projection. 1927 North American datum

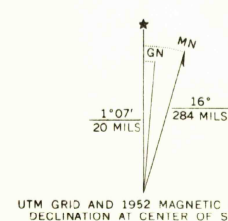
10,000-foot grid based on Nevada coordinate system, east zone

Dashed land lines indicate approximate locations

Unchecked elevations are shown in brown

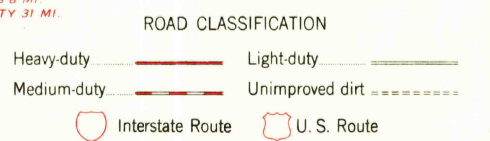
1000-meter Universal Transverse Mercator grid ticks, zone 11, shown in blue

(BLUE DIAMOND)  
2956 IV



CONTOUR INTERVAL 80 FEET  
DOTTED LINES REPRESENT HALF-INTERVAL CONTOURS  
DATUM IS MEAN SEA LEVEL

THIS MAP COMPLIES WITH NATIONAL MAP ACCURACY STANDARDS  
FOR SALE BY U. S. GEOLOGICAL SURVEY, DENVER, COLORADO 80225 OR WASHINGTON, D. C. 20242  
A FOLDER DESCRIBING TOPOGRAPHIC MAPS AND SYMBOLS IS AVAILABLE ON REQUEST



MAY 18 1972

GASS PEAK, NEVADA  
N3615-W11500/15

1952

AMS 2956 I-SERIES V796



USGS  
HISTORICAL FILE  
TOPOGRAPHIC DIVISION

3255

(HENDERSON)  
2956 IV