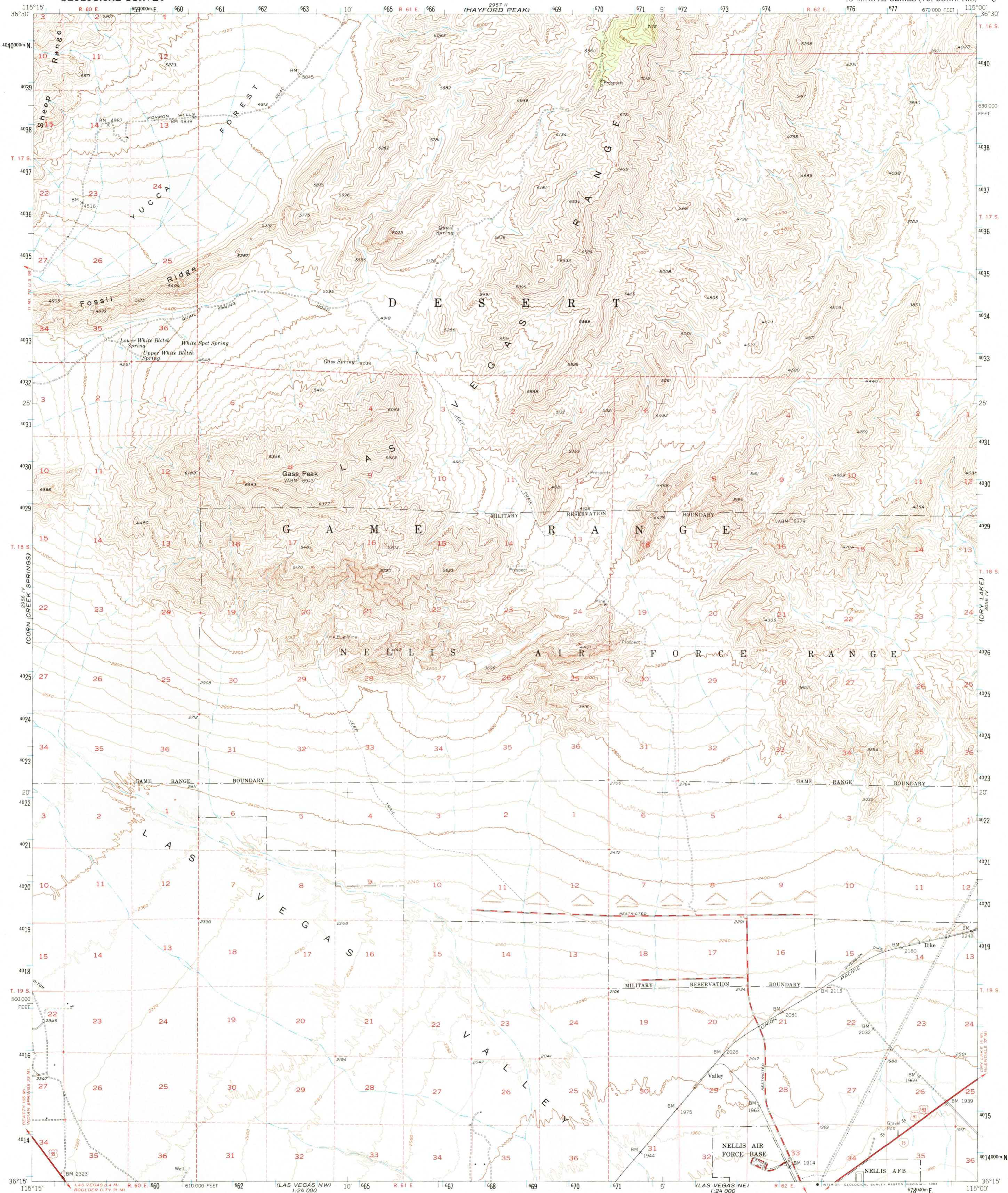
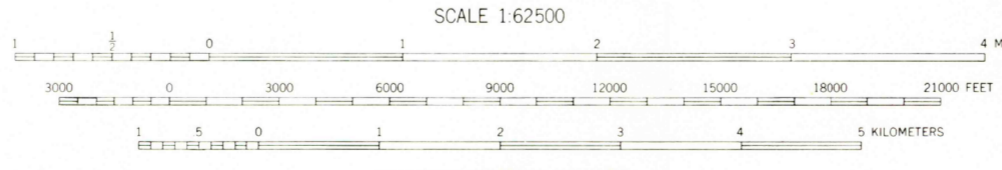


UNITED STATES
DEPARTMENT OF THE INTERIOR
GEOLOGICAL SURVEY

GASS PEAK QUADRANGLE
NEVADA-CLARK CO.
15 MINUTE SERIES (TOPOGRAPHIC)



Mapped, edited, and published by the Geological Survey
Control by USGS and USC&GS
Topography from aerial photographs by photogrammetric methods
Aerial photographs taken 1950. Field check 1952
Polyconic projection. 1927 North American datum
10,000-foot grid based on Nevada coordinate system, east zone
Dashed land lines indicate approximate locations
Unchecked elevations are shown in brown
1000-meter Universal Transverse Mercator grid ticks,
zone 11, shown in blue
To place on the predicted North American Datum 1983
move the projection lines 5 meters north and 75 meters east
There may be private inholdings within the boundaries of
the National or State reservations shown on this map



CONTOUR INTERVAL 80 FEET
DOTTED LINES REPRESENT HALF-INTERVAL CONTOURS
NATIONAL GEODETIC VERTICAL DATUM OF 1929

ROAD CLASSIFICATION
Heavy-duty ——— Light-duty ———
Medium-duty ——— Unimproved dirt ———
Interstate Route ——— U.S. Route ———
The south half of this area also covered by 7.5 minute.
1:24,000-scale maps: Valley and Gass Peak S.W.
dated 1974



THIS MAP COMPLIES WITH NATIONAL MAP ACCURACY STANDARDS
FOR SALE BY U.S. GEOLOGICAL SURVEY, DENVER, COLORADO 80225, OR RESTON, VIRGINIA 22092
A FOLDER DESCRIBING TOPOGRAPHIC MAPS AND SYMBOLS IS AVAILABLE ON REQUEST

GASS PEAK, NEVADA
N3615-W11500/15

1952
DMA 2956 I-SERIES V796

RETURN TO:
USGS AND HISTORICAL MAP ARCHIVES