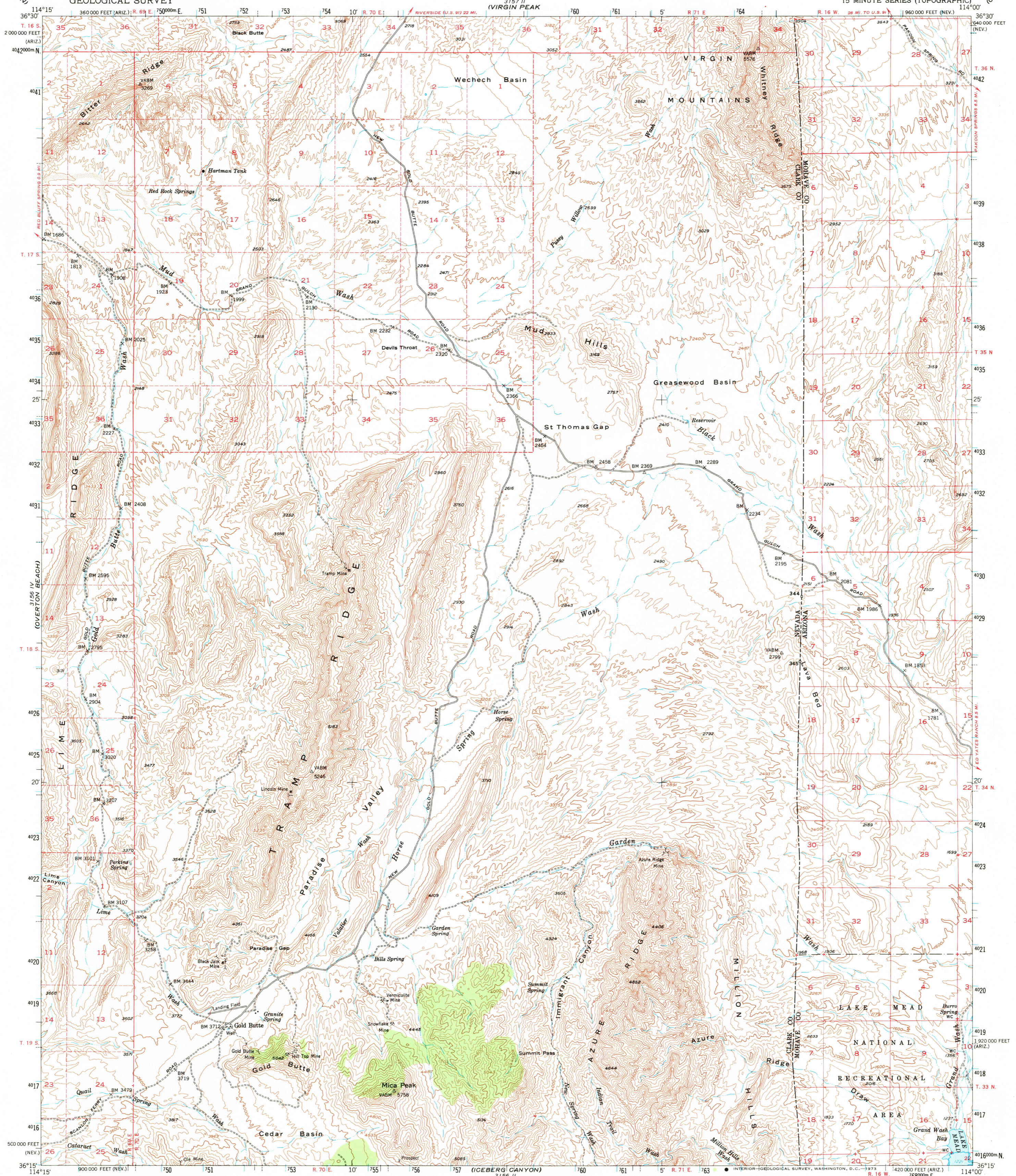
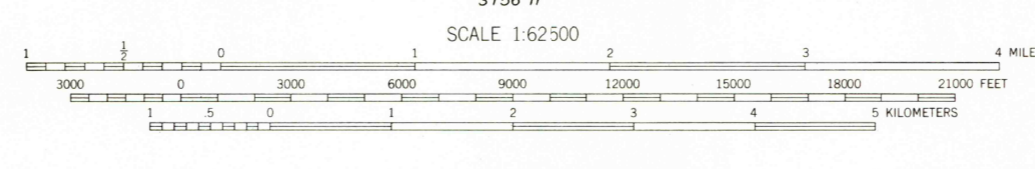
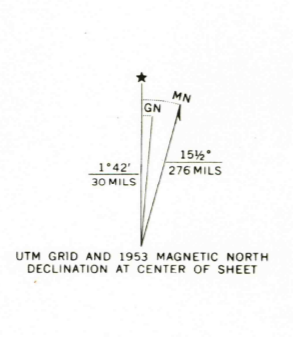


UNITED STATES
DEPARTMENT OF THE INTERIOR
GEOLOGICAL SURVEY

GOLD BUTTE QUADRANGLE
NEVADA—ARIZONA
15 MINUTE SERIES (TOPOGRAPHIC)



Mapped, edited, and published by the Geological Survey
Control by USGS and USC&GS
Topography from aerial photographs by multiplex methods
Aerial photographs taken 1950. Field check 1953
Underwater contours compiled from USDA maps
and later sedimentation studies
Polyconic projection. 1927 North American datum
10,000-foot grid based on Nevada coordinate system, east zone
and Arizona coordinate system, west zone
Dashed land lines indicate approximate locations
Unchecked elevations are shown in brown
1000-meter Universal Transverse Mercator grid ticks,
zone 11, shown in blue



CONTOUR INTERVAL 80 FEET
DATUM IS MEAN SEA LEVEL

THIS MAP COMPLIES WITH NATIONAL MAP ACCURACY STANDARDS
FOR SALE BY U. S. GEOLOGICAL SURVEY, DENVER, COLORADO 80225 OR WASHINGTON, D. C. 20242
A FOLDER DESCRIBING TOPOGRAPHIC MAPS AND SYMBOLS IS AVAILABLE ON REQUEST

ROAD CLASSIFICATION
Light-duty ————— Unimproved dirt - - - - -

NEVADA
QUADRANGLE LOCATION

GOLD BUTTE, NEV.—ARIZ.
N3615—W11400/15
1953
AMS 3156 I—SERIES V798