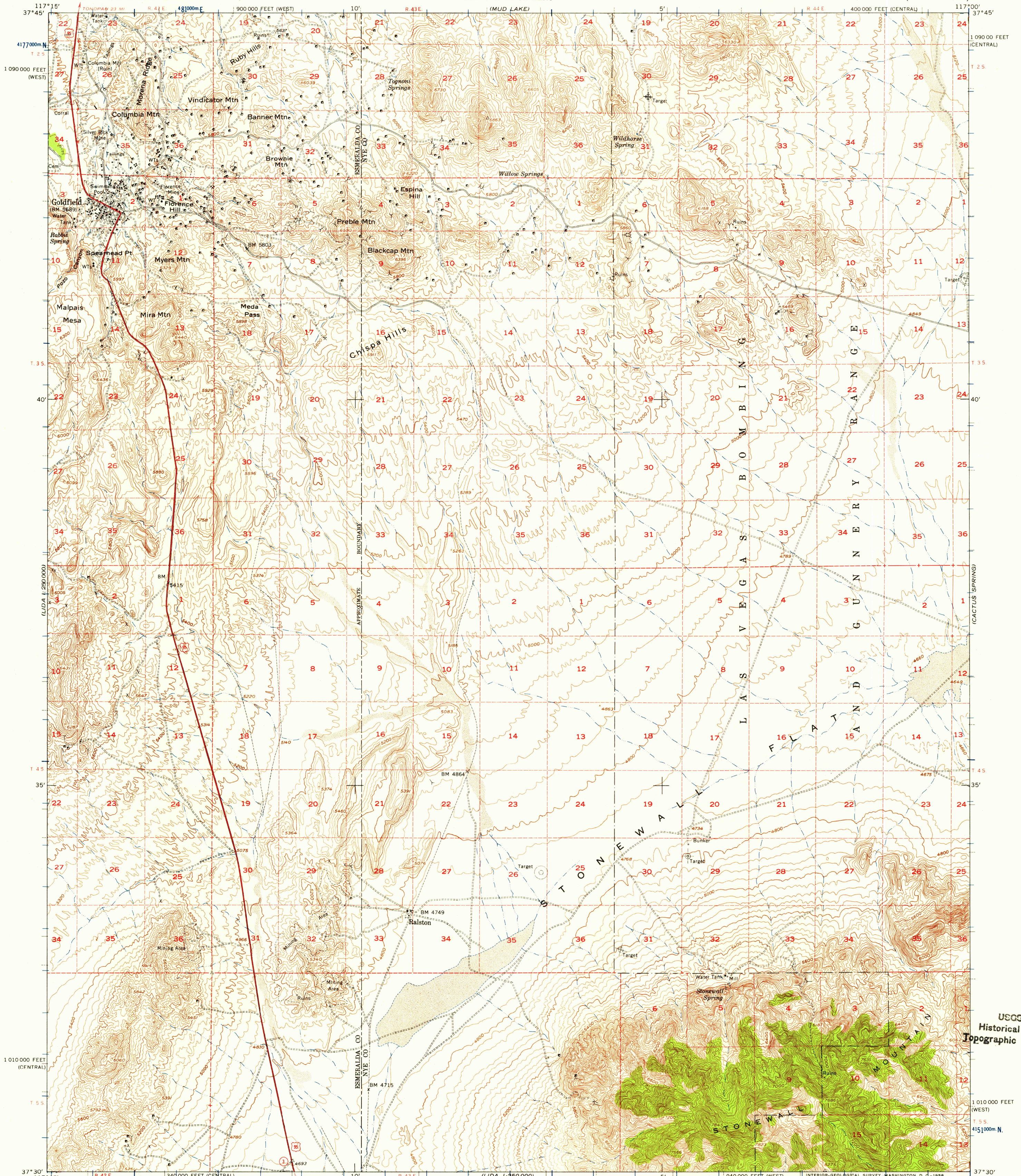
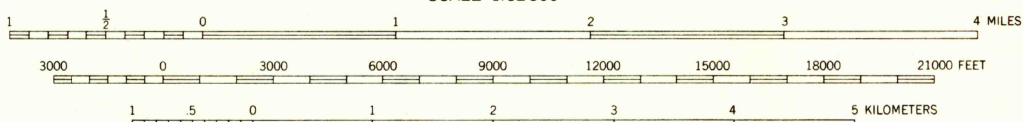
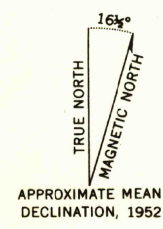


(CACTUS PEAK)

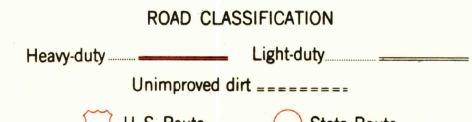


Mapped by the Army Map Service
Published for civil use by the Geological Survey
Control by USC&GS and USCE

Topography from aerial photographs by photogrammetric methods
Aerial photographs taken 1952. Field check 1952
Polyconic projection. 1927 North American datum
10,000-foot grid based on Nevada coordinate system,
central and west zones
1000-meter Universal Transverse Mercator grid ticks,
zone 11, shown in blue
Dashed land lines indicate approximate locations
Unchecked elevations are shown in brown



CONTOUR INTERVAL 40 FEET
DASHED LINES REPRESENT 20-FOOT CONTOURS
DATUM IS MEAN SEA LEVEL



U.S.G.S.
FILE COPY
GOLDFIELD, NEV.
N3730-W11700/15
TOPOGRAPHIC DIVISION

FOR SALE BY U. S. GEOLOGICAL SURVEY, DENVER 2, COLORADO OR WASHINGTON 25, D. C.
A FOLDER DESCRIBING TOPOGRAPHIC MAPS AND SYMBOLS IS AVAILABLE ON REQUEST

1952
JUL 15 1950
1950