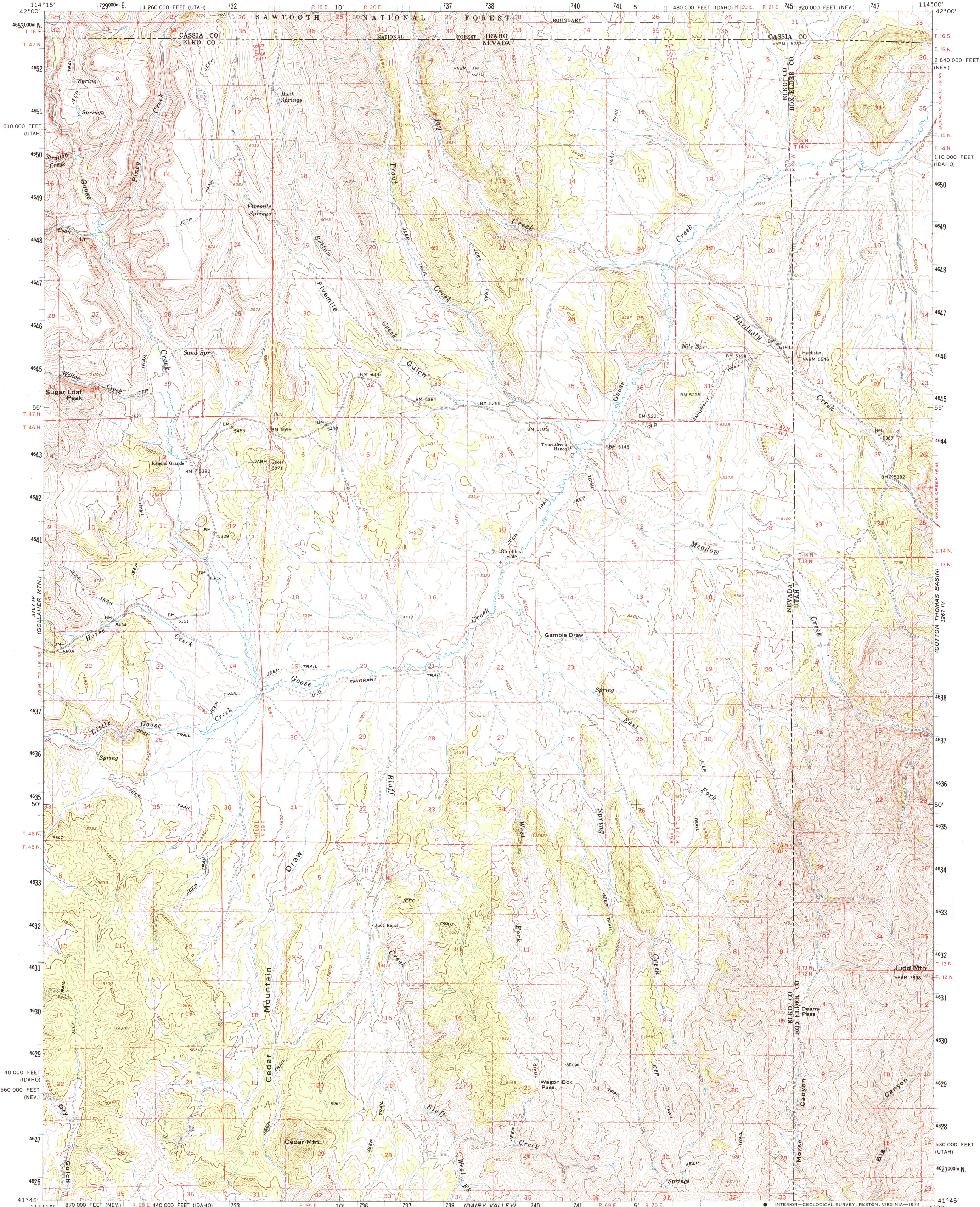
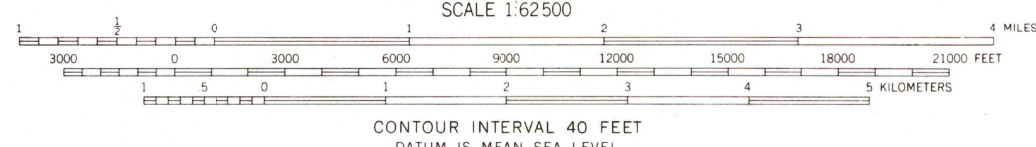
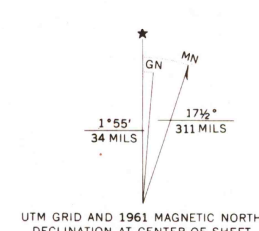


3167 IV
298 1/4 SW
BLUE HILL 1:24,000



Mapped, edited, and published by the Geological Survey
Control by USGS and USC&GS
Topography by photogrammetric methods from aerial
photographs taken 1956. Field checked 1961
Polyconic projection. 1927 North American datum
10,000-foot grids based on Nevada coordinate system,
east zone, Utah coordinate system, north zone, and
Idaho coordinate system, central zone
1000-meter Universal Transverse Mercator grid ticks,
zone 11, shown in blue



CONTOUR INTERVAL 40 FEET
DATUM IS MEAN SEA LEVEL



ROAD CLASSIFICATION
Light-duty ————
Unimproved dirt - - - - -

THIS MAP COMPLIES WITH NATIONAL MAP ACCURACY STANDARDS
FOR SALE BY U.S. GEOLOGICAL SURVEY, DENVER, COLORADO 80225, OR RESTON, VIRGINIA 22092
A FOLDER DESCRIBING TOPOGRAPHIC MAPS AND SYMBOLS IS AVAILABLE ON REQUEST

GOOSE CREEK, NEV.-UTAH-IDAHO
N4145-W11400/15

1961
AMS 3167 I-SERIES V766